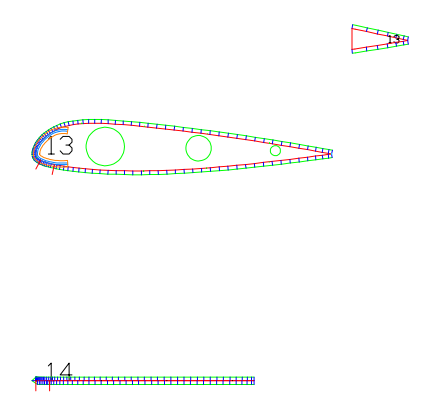
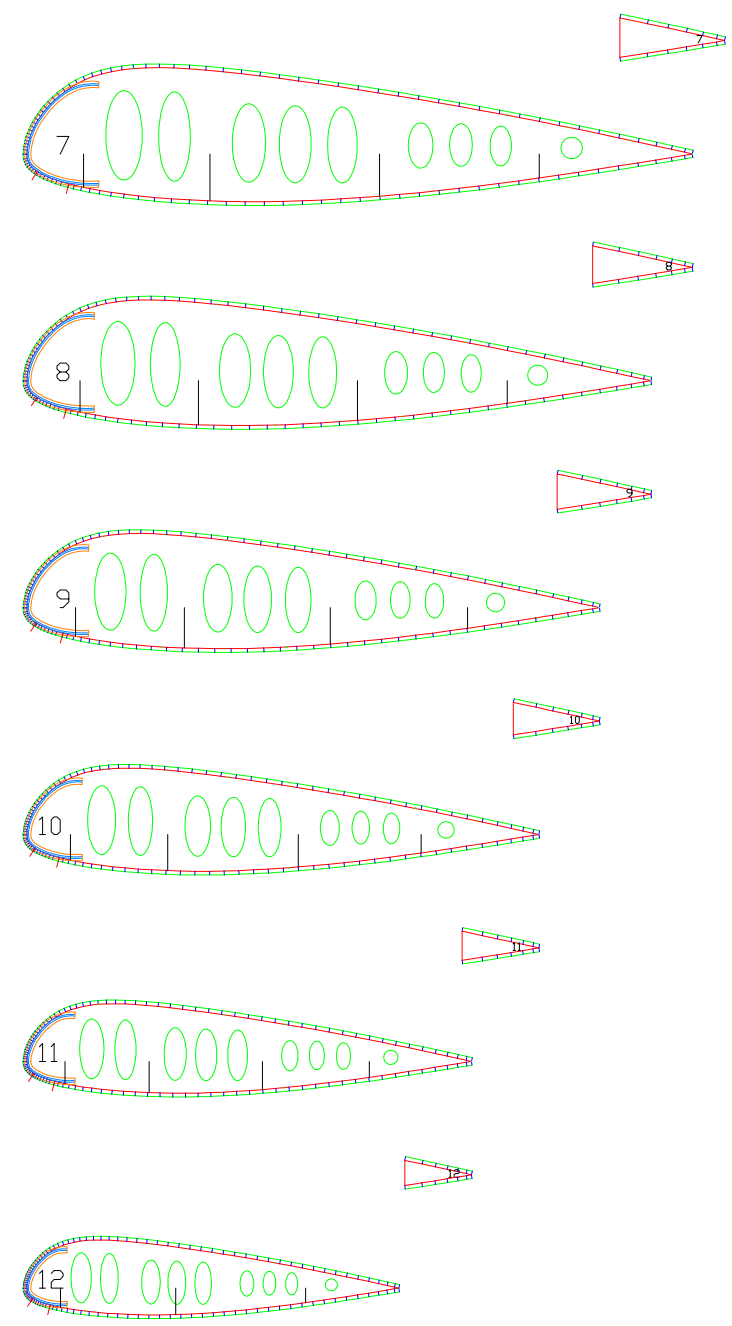
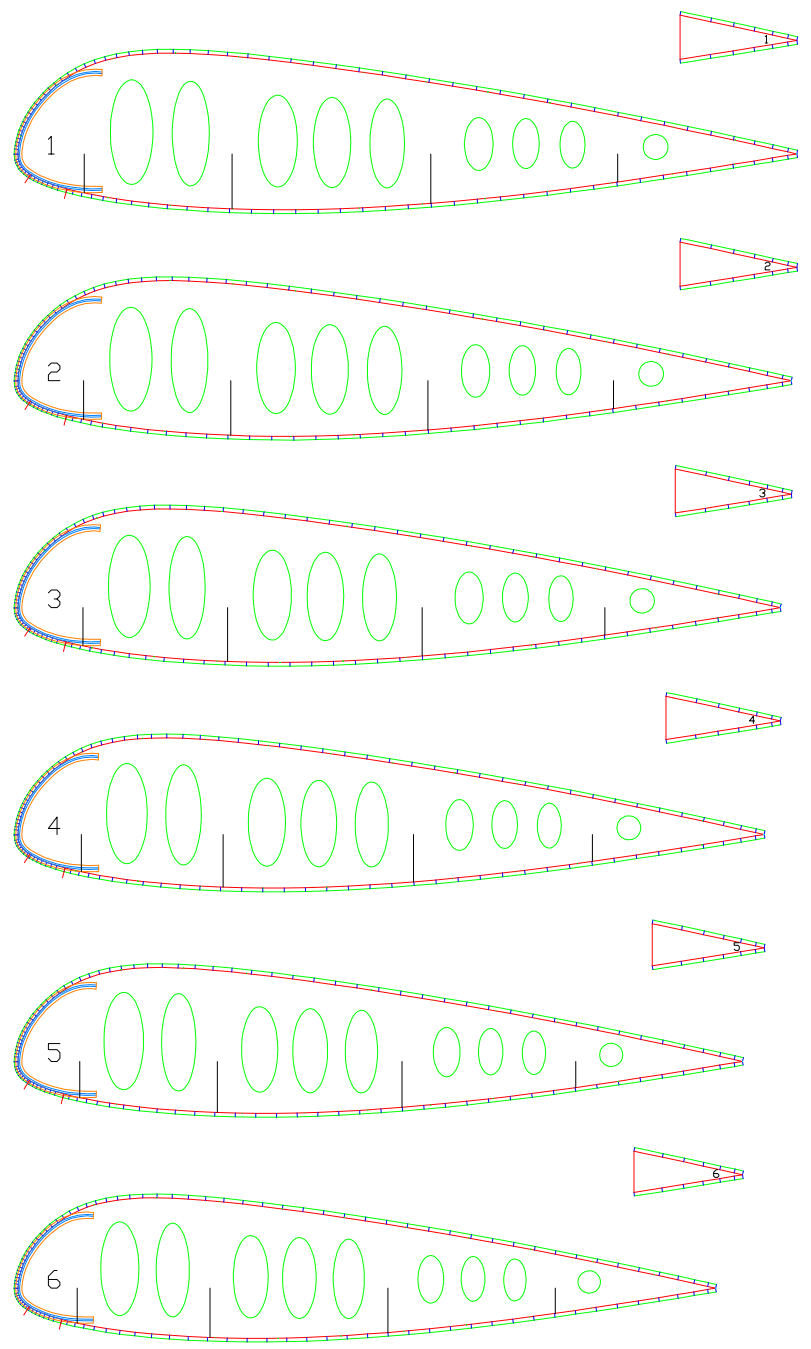


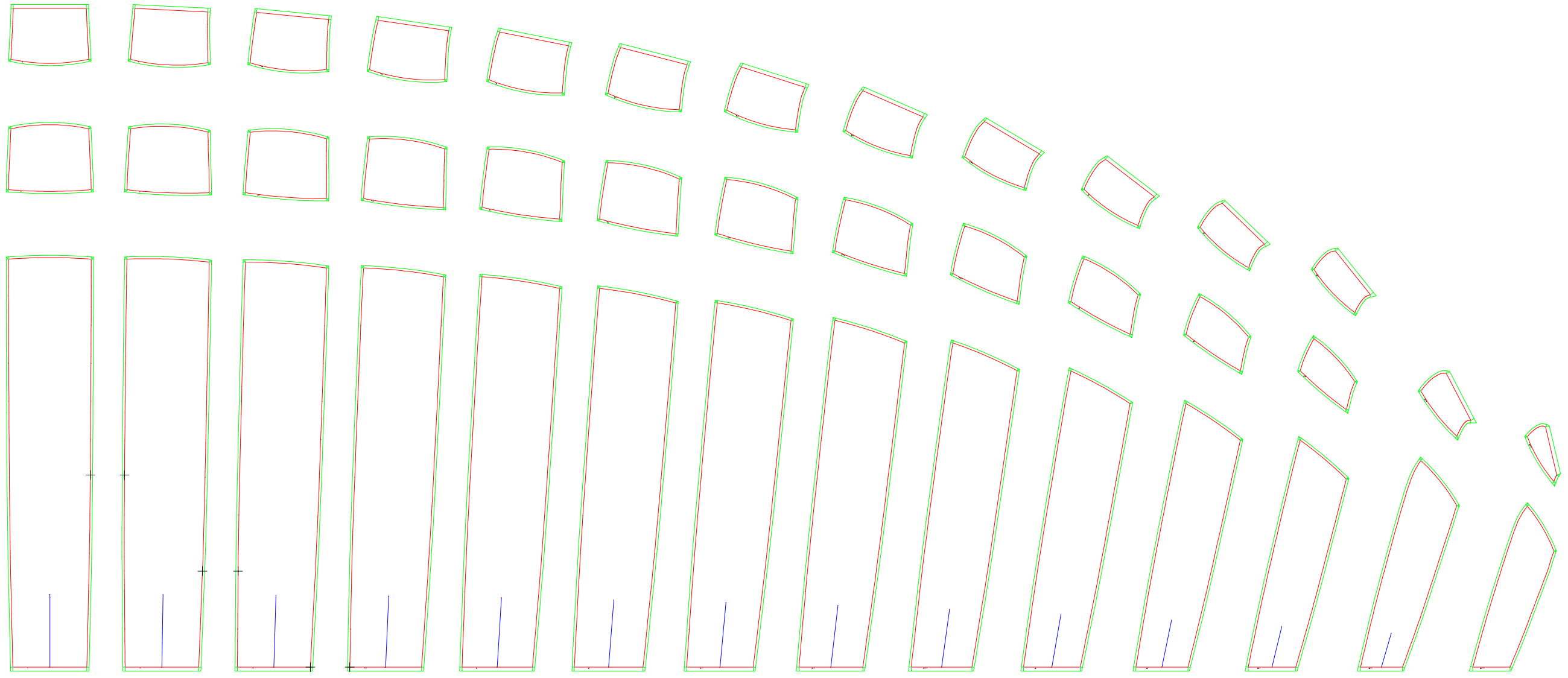
LABORATORI D'ENVOL gnuA5-27
 Flat area (m²) : 27.02
 Flat span (m) : 10.78
 Flat aspect ratio : 4.30
 Cells number : 27

1-1 PLANFORM AND VAULT



1-2 RIBS

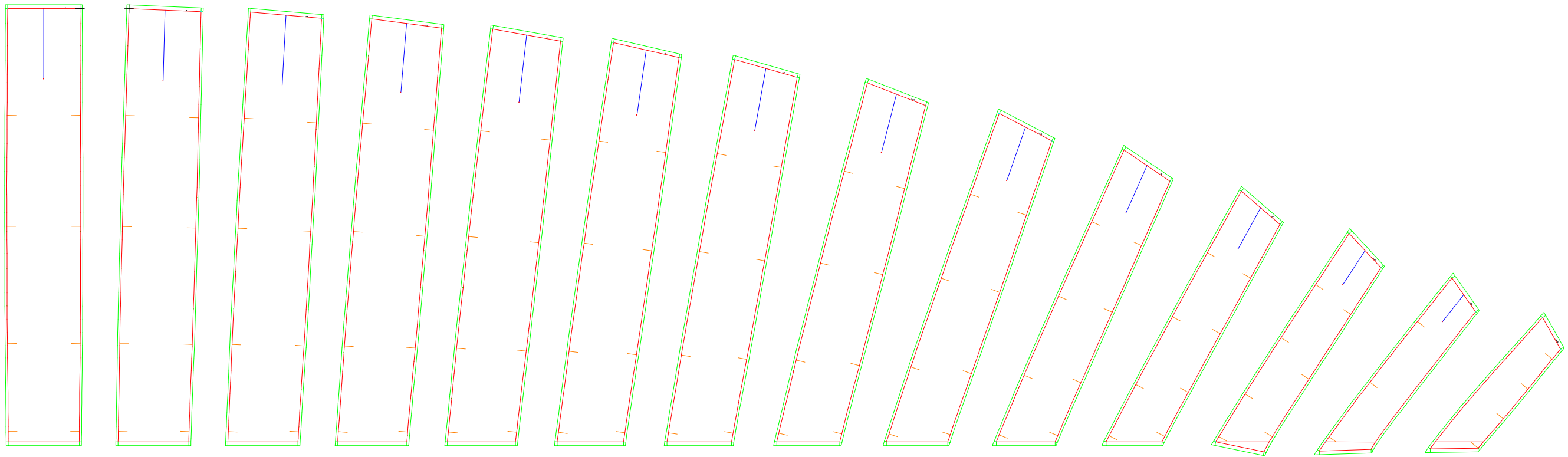
Leading edge



Trailing edge

1-3 EXTRADOS PANELS

Trailing edge



Leading edge

2-3 INTRADOS PANELS

0 1
[]

4 5
[]

8 9
[]

0 1
[]

4 5
[]

8 9
[]

0 1
[]

4 5
[]

8 9
[]

0 1
[]

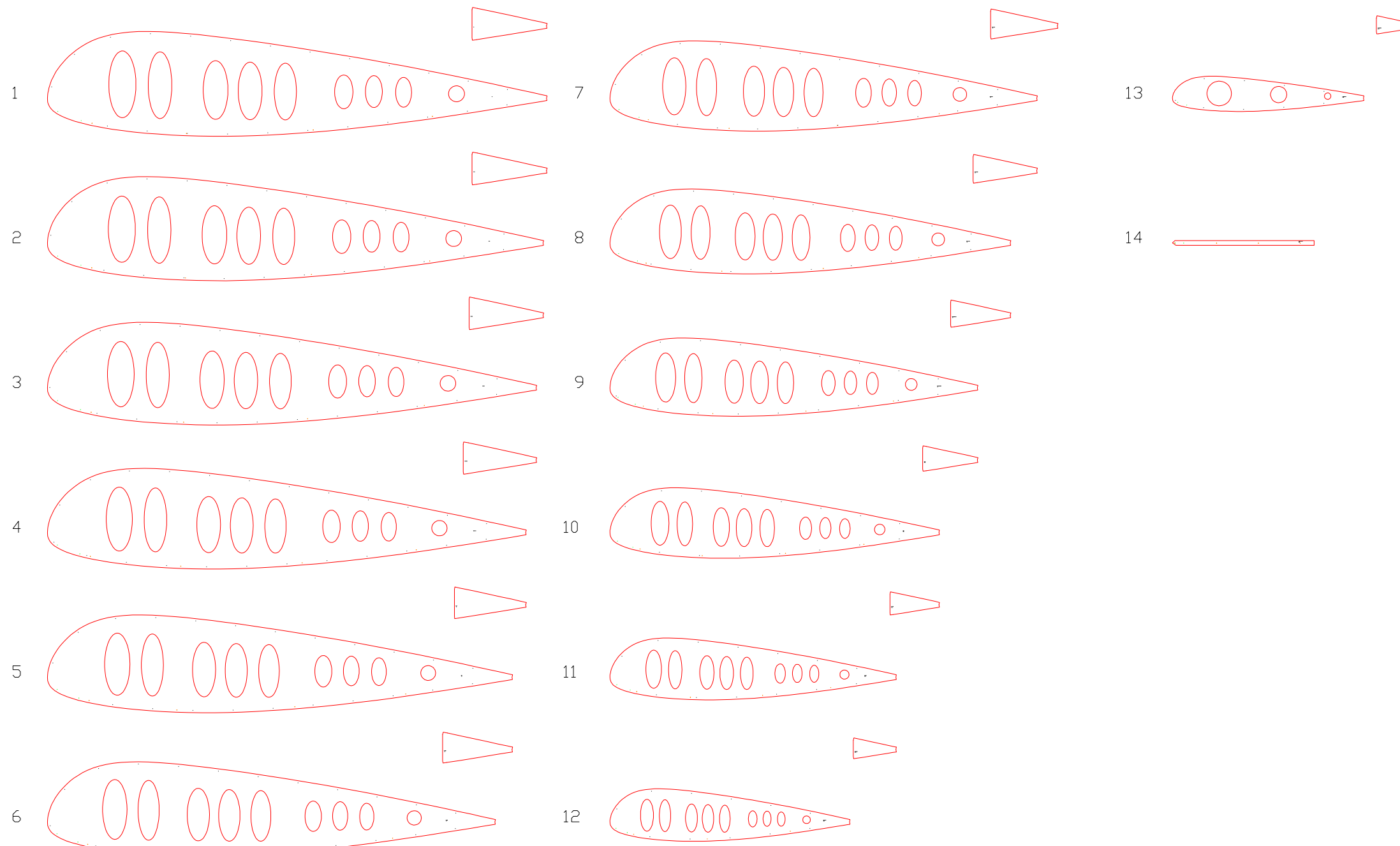
4 5
[]

8 9
[]



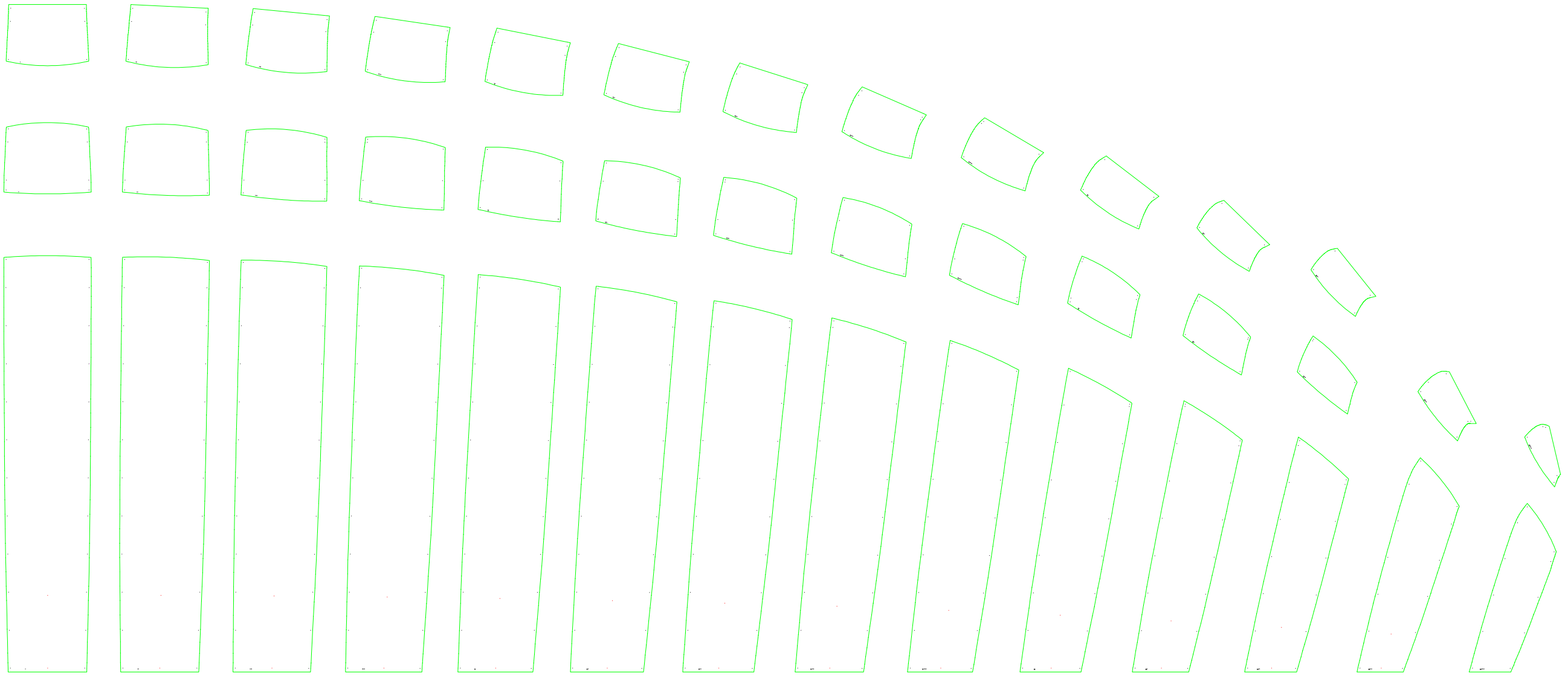
List of nylon rods (bloc 1)

Group 1		
Jonc 1		91.0
Jonc 2		90.4
Jonc 3		89.1
Jonc 4		87.2
Jonc 5		84.7
Jonc 6		81.5
Jonc 7		77.8
Jonc 8		72.9
Jonc 9		66.9
Jonc 10		59.8
Group 2		
Jonc 11		51.9
Jonc 12		43.5
Jonc 13		32.0



1-4 RIBS (FOR CUTTING TABLE)

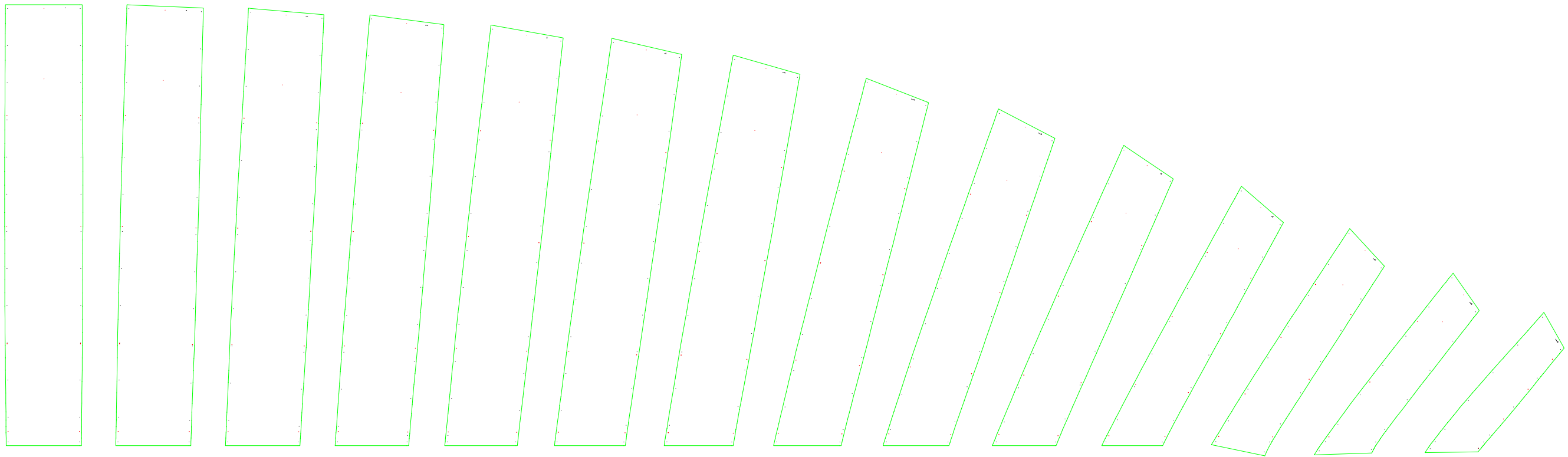
Leading edge



Trailing edge

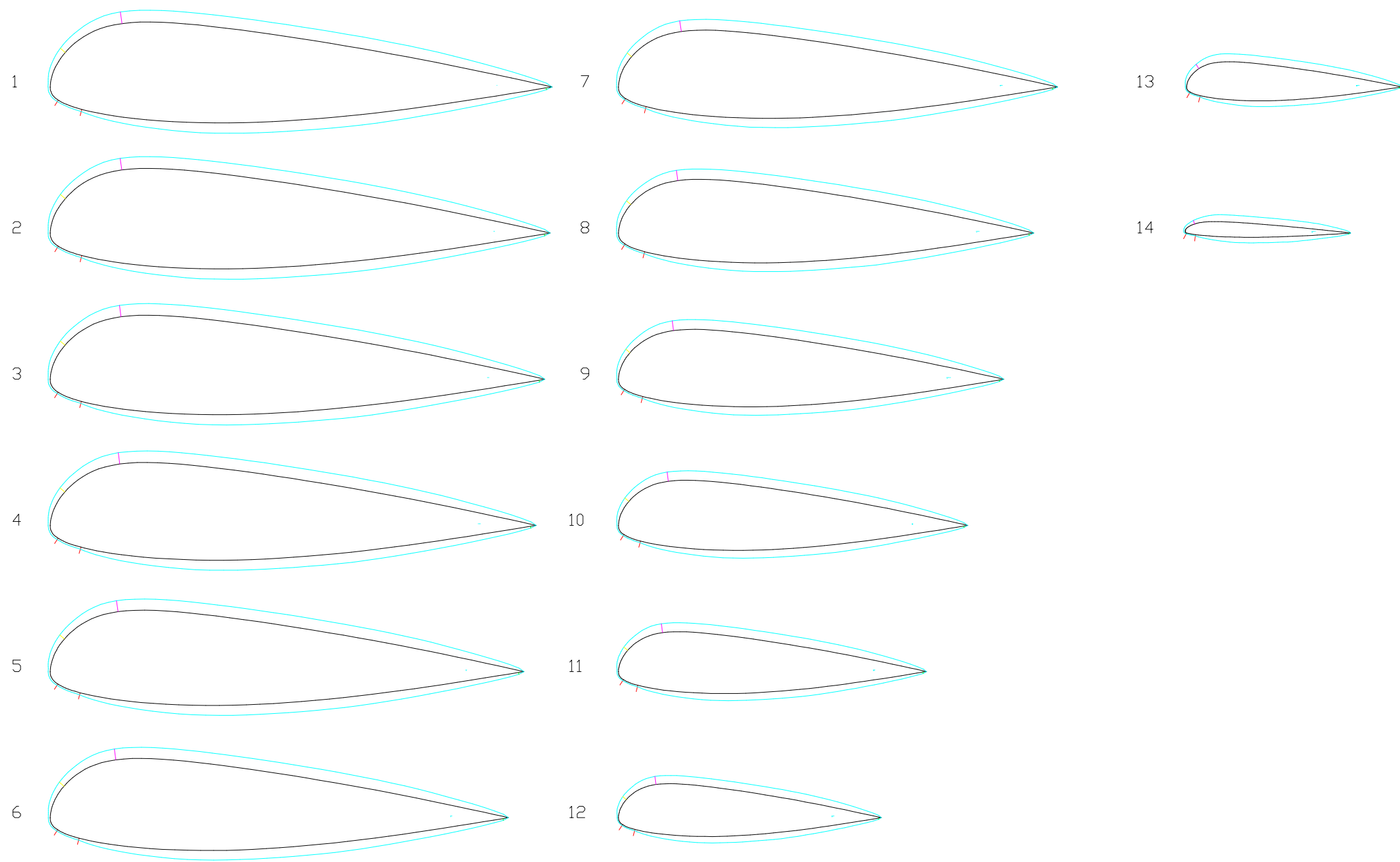
1-5 EXTRADOS PANELS (FOR CUTTING TABLE)

Trailing edge

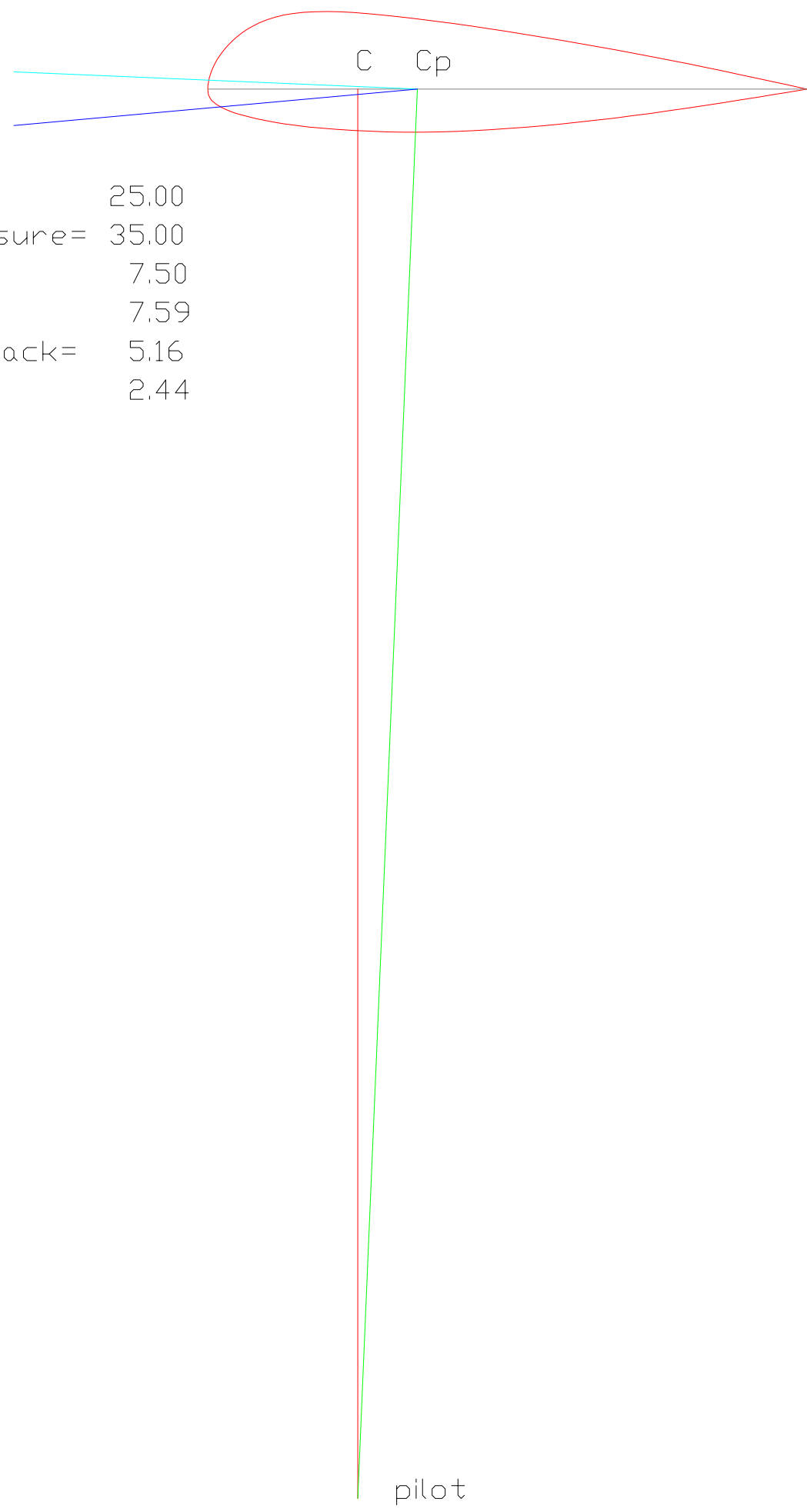


Leading edge

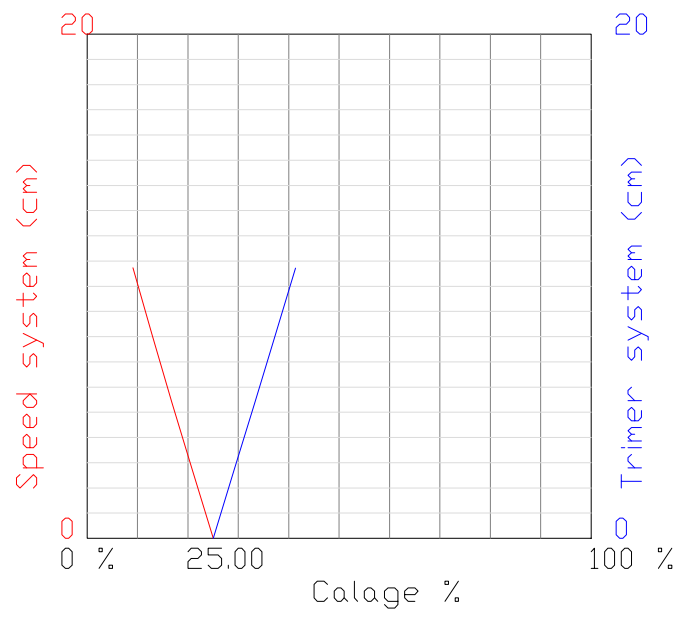
2-5 INTRADOS PANELS (FOR CUTTING TABLE)



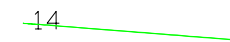
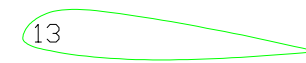
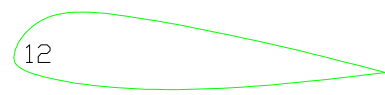
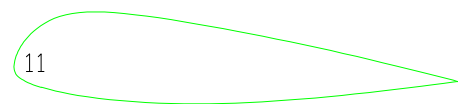
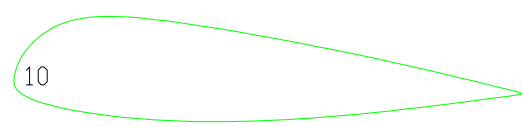
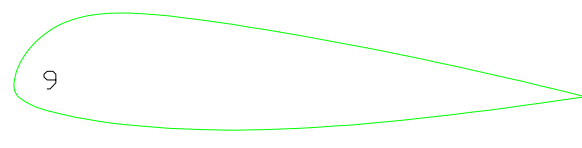
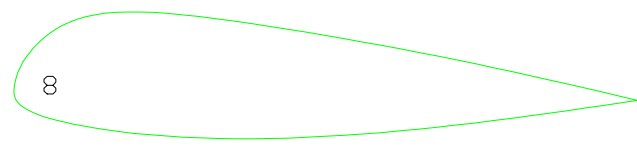
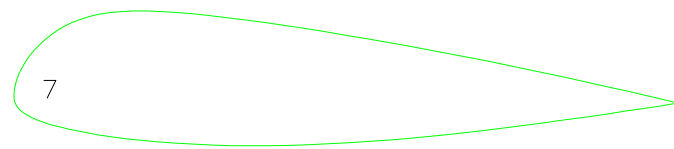
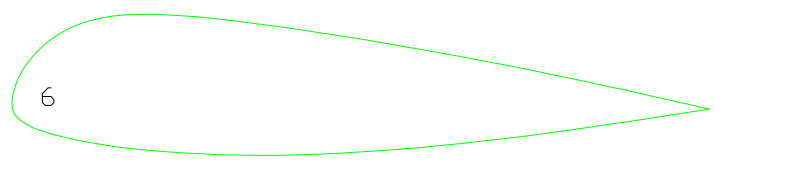
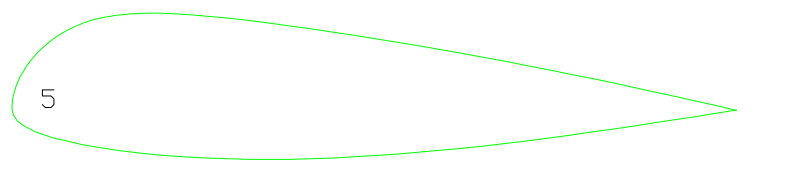
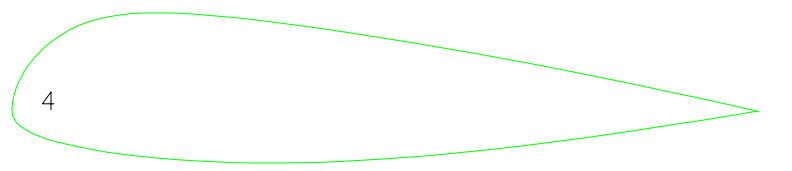
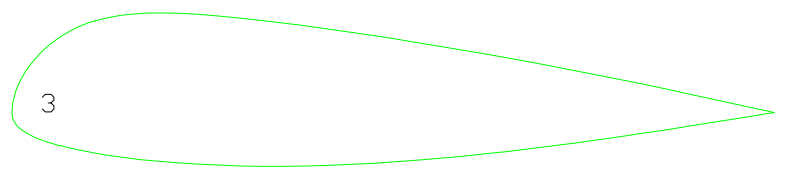
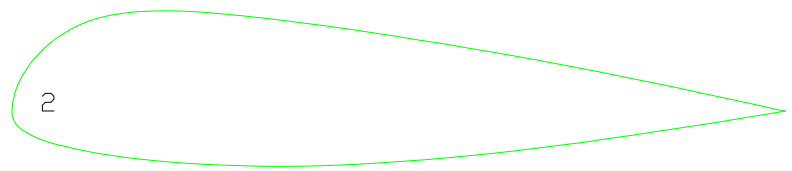
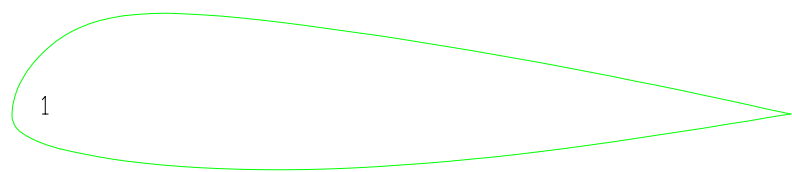
1-8 MIDDLE AND MIDDLE OVALIZED AIRFOILS



calage= 25.00
 center pressure= 35.00
 glide ratio= 7.50
 glide angle= 7.59
 angle of attack= 5.16
 assiette= 2.44



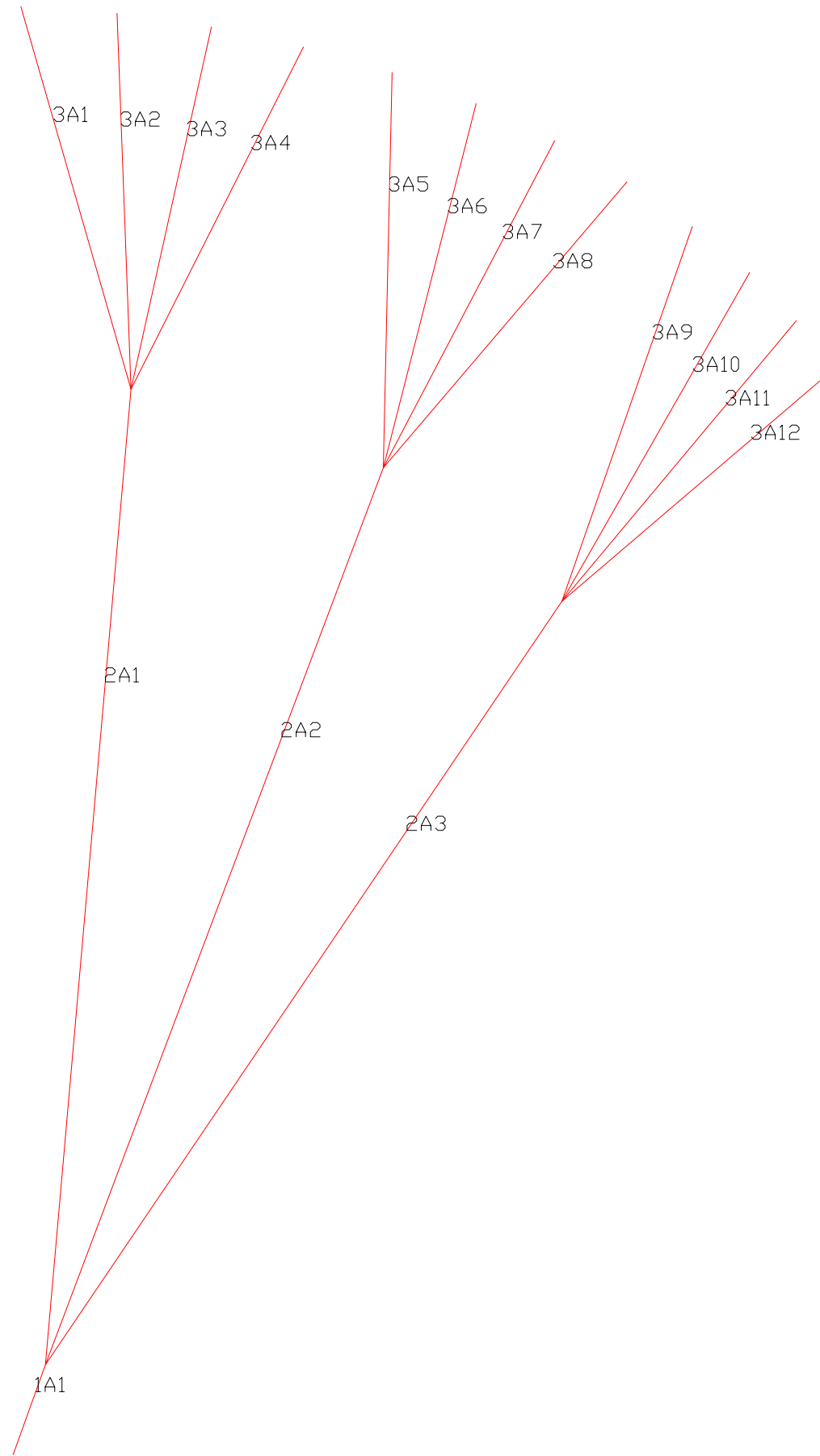
2-1 CALAGE ESTIMATION



2-2 RIBS WASHIN ANGLE

Line - Label - Length

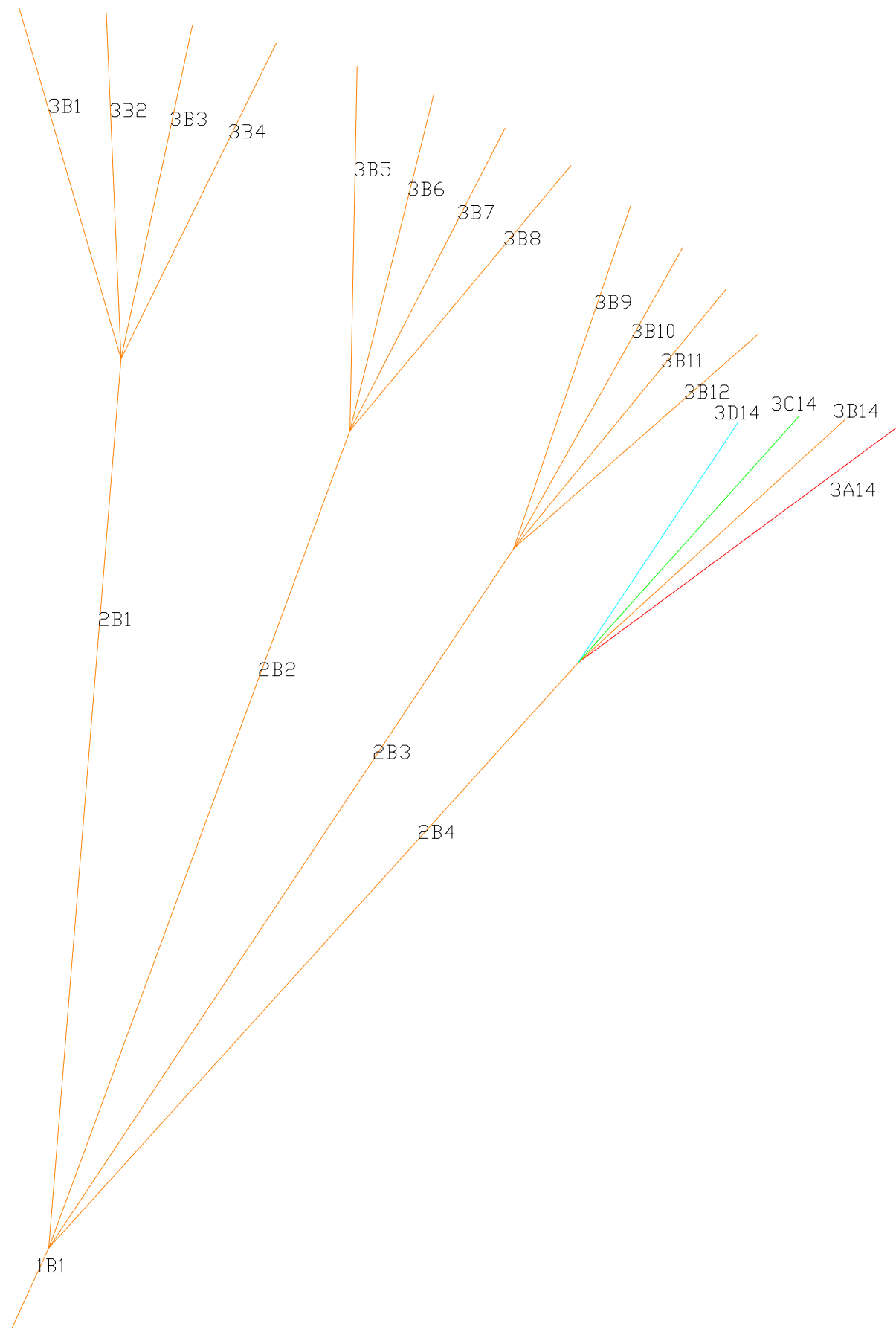
1	1A1	47.0
2	2A1	481.7
3	2A2	470.8
4	2A3	452.8
5	3A1	196.1
6	3A2	185.2
7	3A3	182.5
8	3A4	188.3
9	3A5	194.9
10	3A6	184.9
11	3A7	181.4
12	3A8	184.4
13	3A9	195.5
14	3A10	185.8
15	3A11	180.1
16	3A12	178.0



3-2 LINES A

Line - Label - Length

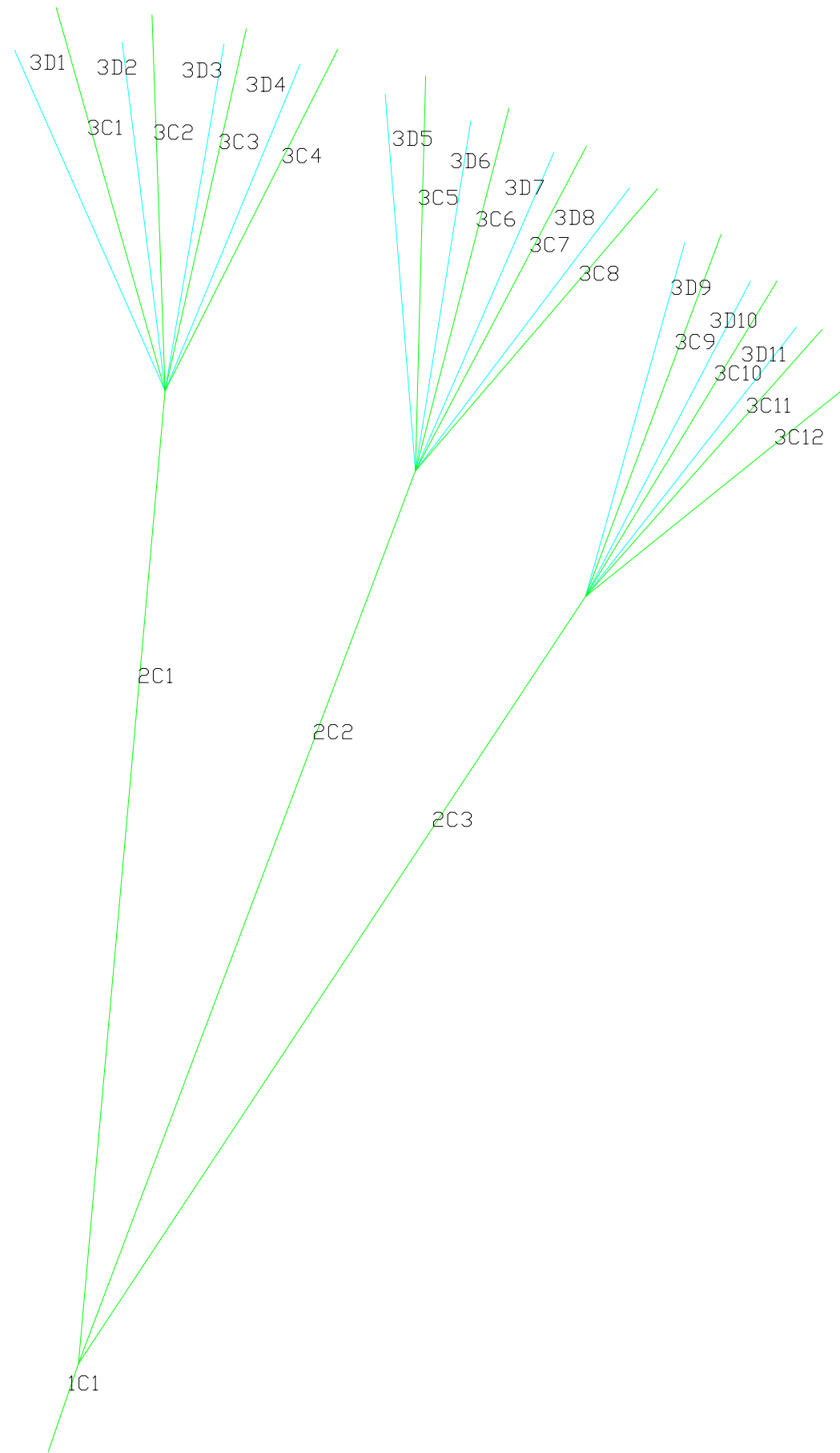
17	1B1	47.0
18	2B1	475.8
19	2B2	464.8
20	2B3	449.8
21	2B4	429.0
22	3B1	195.5
23	3B2	184.6
24	3B3	181.9
25	3B4	187.6
26	3B5	194.2
27	3B6	184.6
28	3B7	181.5
29	3B8	184.6
30	3B9	193.4
31	3B10	184.8
32	3B11	179.7
33	3B12	180.7
34	3A14	179.6
35	3B14	179.5
36	3C14	183.0
37	3D14	190.1



3-3 LINES B

Line - Label - Length

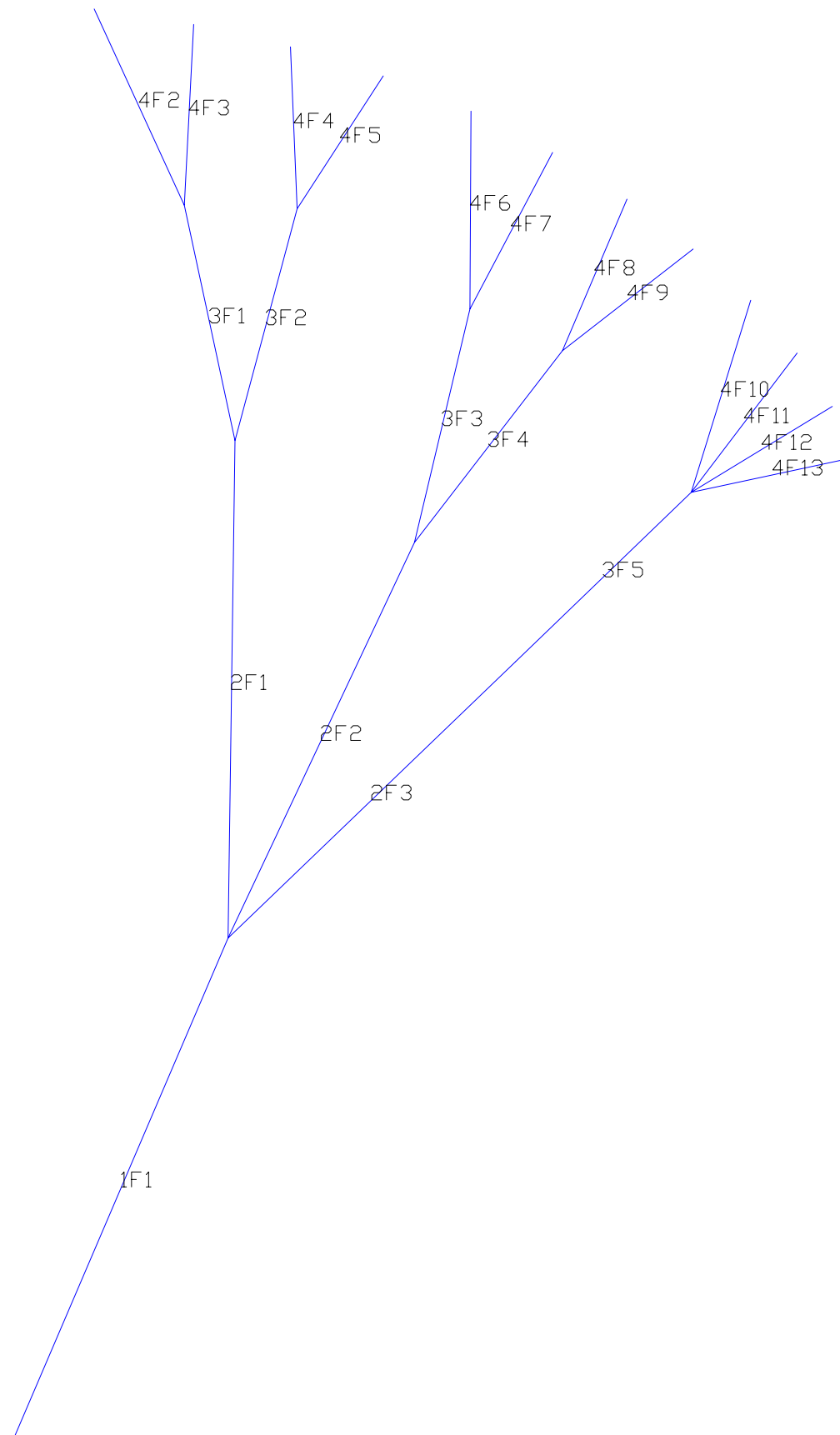
38	1C1	47.0
39	2C1	490.8
40	2C2	479.8
41	2C3	463.9
42	3C1	189.4
43	3C2	178.2
44	3C3	175.7
45	3C4	181.8
46	3D1	208.7
47	3D2	198.3
48	3D3	195.7
49	3D4	200.8
50	3C5	188.5
51	3C6	178.6
52	3C7	175.3
53	3C8	178.3
54	3D5	206.4
55	3D6	196.5
56	3D7	192.5
57	3D8	194.3
58	3C9	186.6
59	3C10	178.6
60	3C11	173.7
61	3C12	179.5
62	3D9	199.6
63	3D10	190.9
64	3D11	184.9



3-4 LINES C

Line - Label - Length

65	1F1	270.0
66	2F1	249.0
67	2F2	218.0
68	2F3	196.0
69	3F1	120.0
70	3F2	120.0
71	3F3	120.0
72	3F4	120.0
73	3F5	120.0
74	4F2	106.9
75	4F3	90.6
76	4F4	80.9
77	4F5	78.4
78	4F6	98.9
79	4F7	88.1
80	4F8	82.1
81	4F9	81.0
82	4F10	100.7
83	4F11	86.6
84	4F12	80.4
85	4F13	79.9



4-5 BRAKES

BRAKE_DISTRIBUTION
CENTER

0.00

0.00

0.00

0.00

WING_TIP

0.00

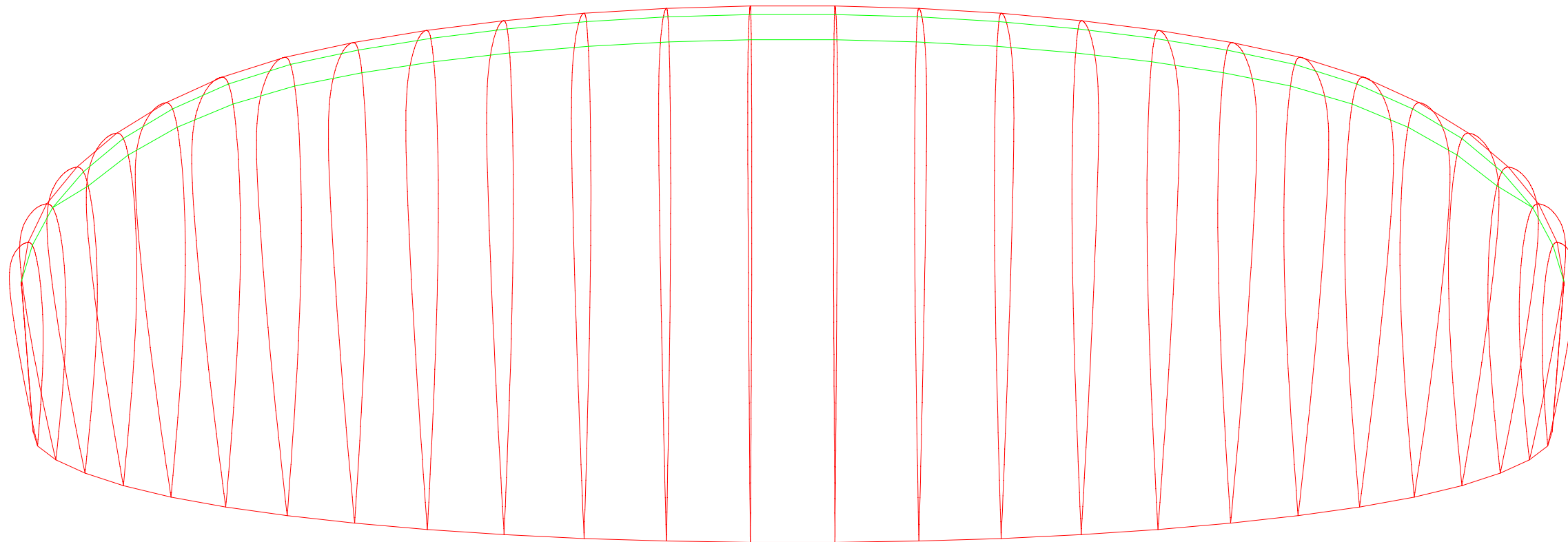
0.00

25.00

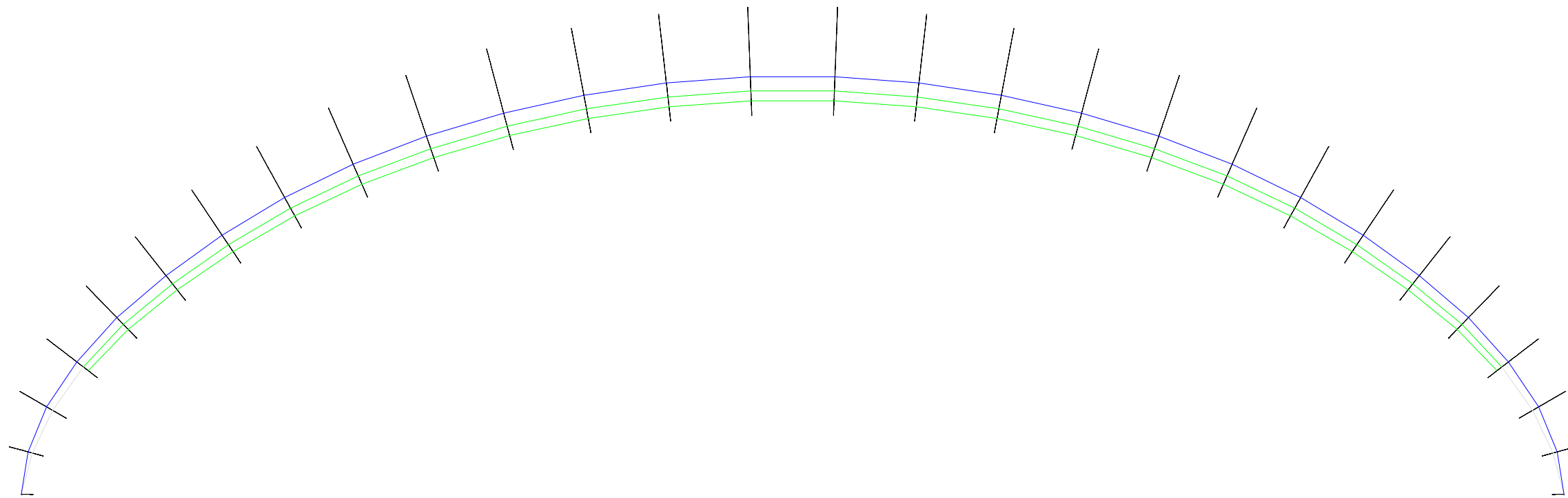
55.00

70.00

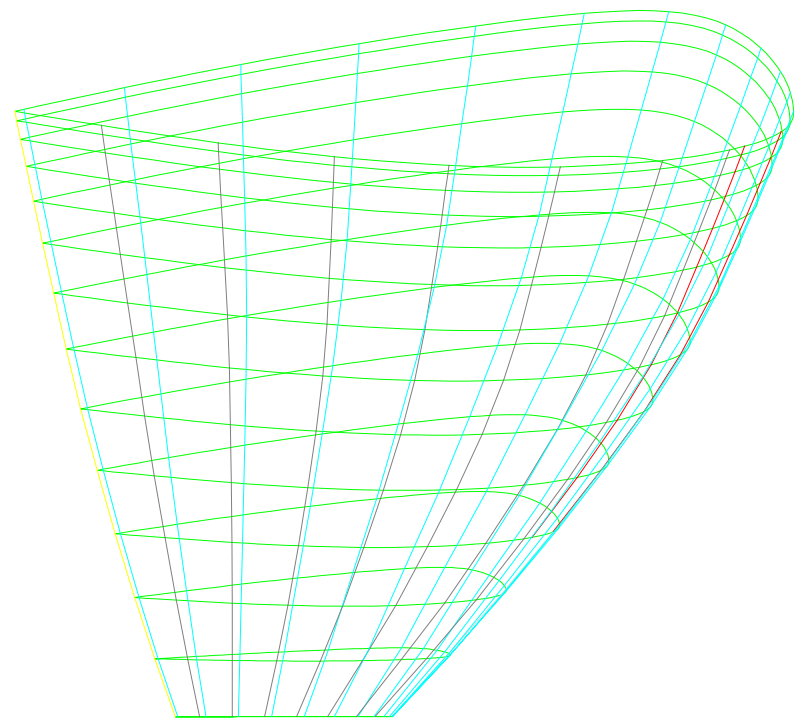
100.00



3-1 UPPER VIEW



4-1 VAULT VIEW



4-2 LATERAL VIEW

PLANS GENERAL NOTES

- 1-1: Planform and vault view (informative)
- 1-2: Ribs for plotter, one side
- 1-3: Extradados panels for plotter, one side
- 1-4: Ribs for laser cutting, one side. Units cm
- 1-5: Extradados for laser cutting, one side. Units cm
- 1-6: Middle unloaded ribs for laser cutting, one side Units cm
- 1-7: Rods pockets and nylons lengths, mylars
- 1-8: Intermediate and ovalized airfoils

- 2-1: Calage estimation, speed and trim systems
- 2-2: Ribs printed with washin angle (informative)
- 2-3: Intrados panels for plotter, one side
- 2-4: Mini-ribs horizontal and diagonal
- 2-5: Intrados for laser cutting, one side
- 2-6: Full diagonal ribs laser, one side
- 2-7: Free

- 3-1: Upper view 3D (informative)
- 3-2: Lines A
- 3-3: Lines B
- 3-4: Lines C
- 3-5: Lines D
- 3-6: V-rib type-6
- 3-7: Free

- 4-1: Vault view (informative)
- 4-2: Lateral view (informative)
- 4-3: Brake distribution (informative)
- 4-4: Free
- 4-5: Brake lines
- 4-6: Free
- 4-7: General notes

UNITS

Main units are centimeters. Scale x10 to use in mm

WIDTHS FOR SEWING AND OFFSETS

- Lateral width in extradados (mm): 15.00
- Width in leading edge ex (mm): 25.00
- Width in trailing edge ex (mm): 25.00
- Lateral width in intrados (mm): 15.00
- Width in leading edge in (mm): 25.00
- Width in trailing edge in (mm): 25.00
- Lateral width in ribs (mm): 15.00
- Lateral width in V-ribs (mm): 15.00
- General offset lateral points (mm): 1.20

- Distance between equidistant points (cm): 25.00

"ROMAN" NUMBERS CODIFICATION

Numbering panels, ribs, mini-ribs, V-ribs

- Number 1 =
- Number 2 =
- Number 3 =
- Number 4 =
- Number 5 =
- Number 6 =
- Number 7 =
- Number 8 =
- Number 9 =
- Number 10 =
- Number 11 =
- Number 12 =
- Number 13 =
- Number 14 =