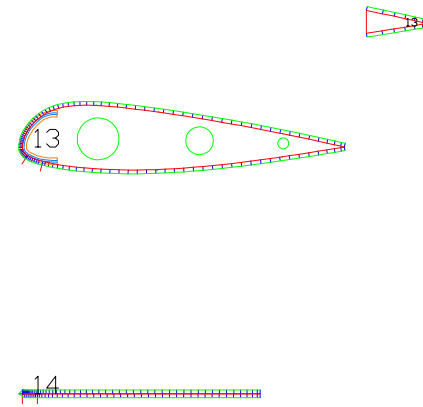
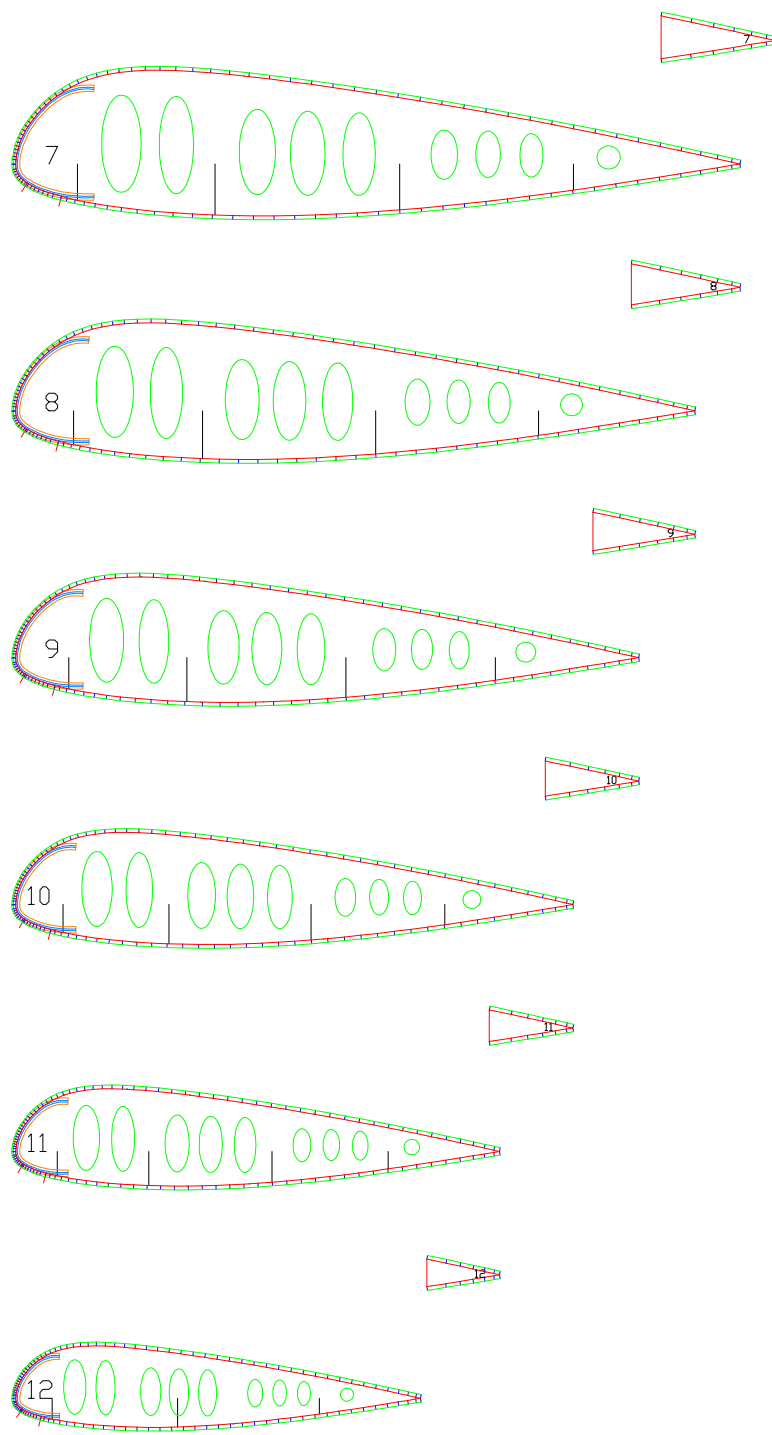
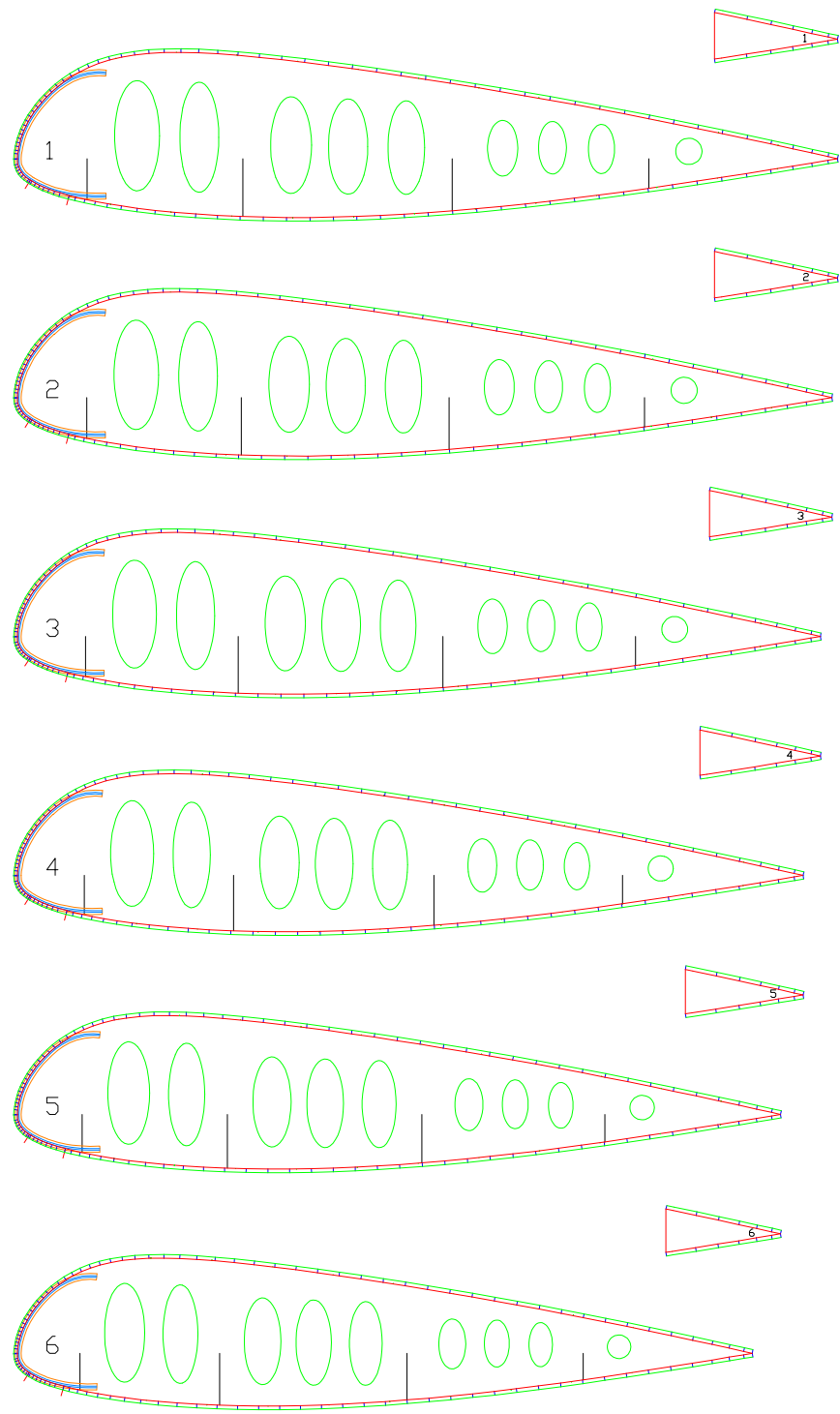


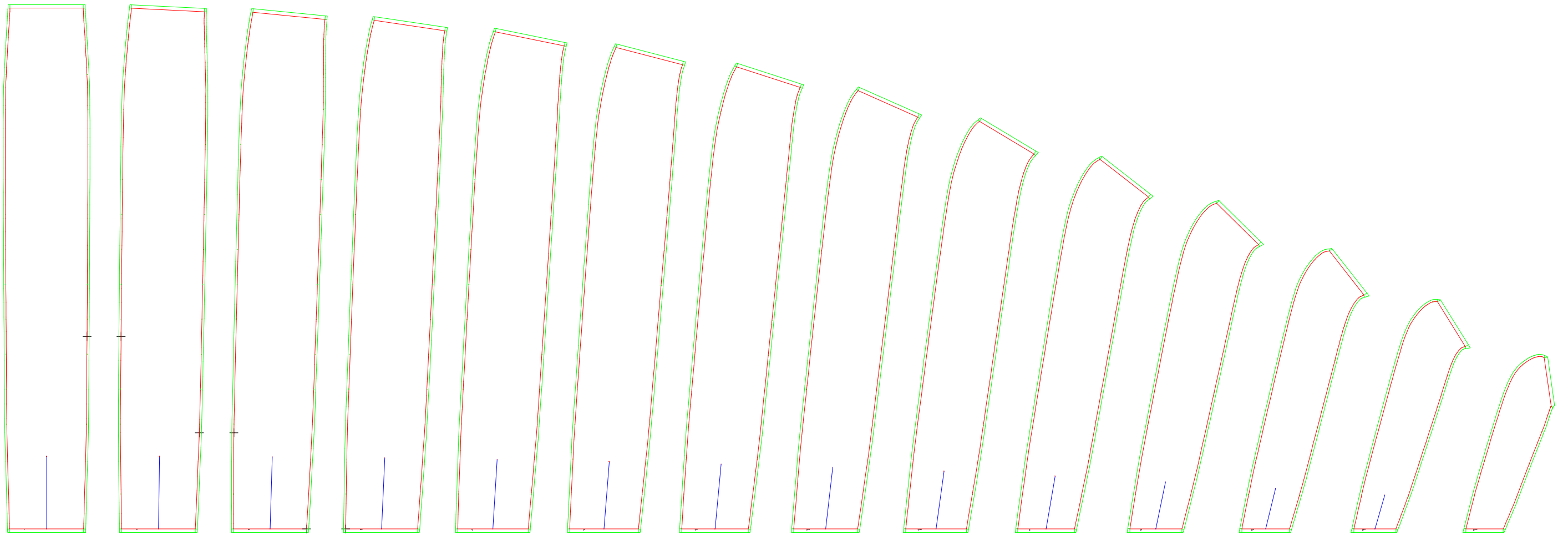
LABORATORI D'ENVOL gnuA4-32
 Flat area (m²) : 32.00
 Flat span (m) : 11.73
 Flat aspect ratio : 4.30
 Cells number : 27

1-1 PLANFORM AND VAULT



1-2 RIBS

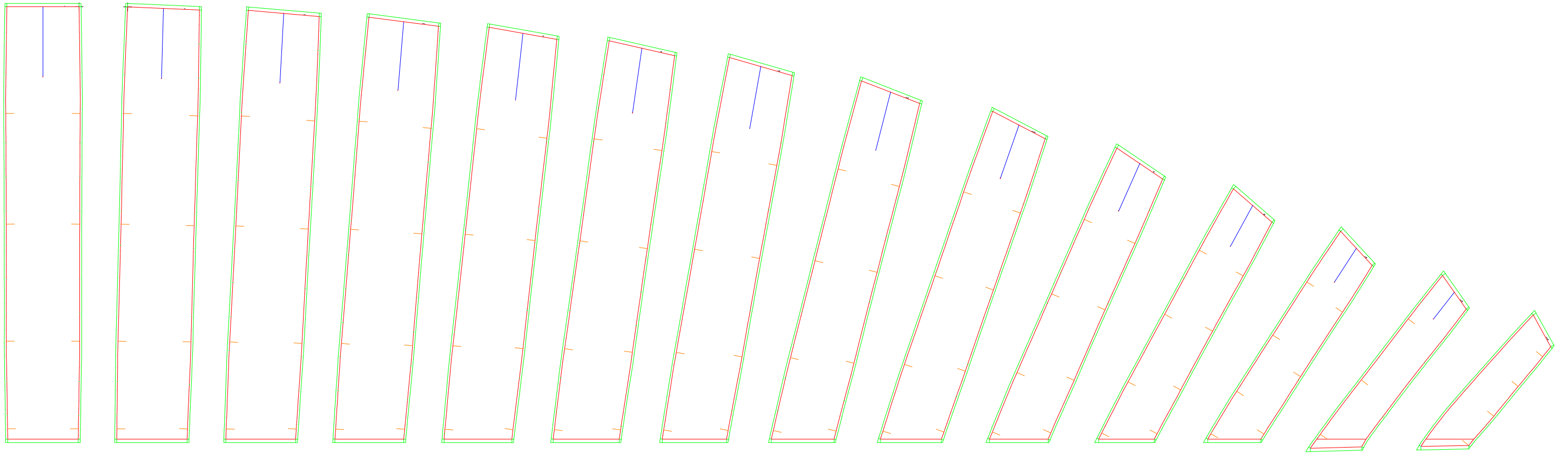
Leading edge



Trailing edge

1-3 EXTRADOS PANELS

Trailing edge



Leading edge

2-3 INTRADOS PANELS

0 1
[]

4 5
[]

8 9
[]

0 1
[]

4 5
[]

8 9
[]

0 1
[]

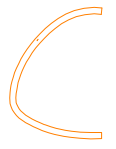
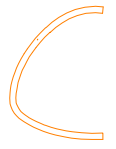
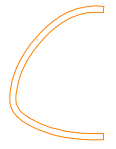
4 5
[]

8 9
[]

0 1
[]

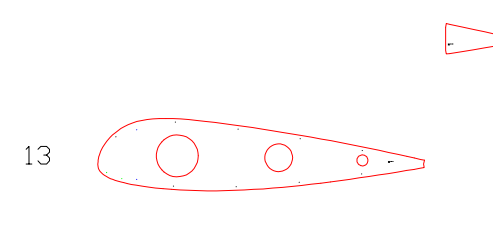
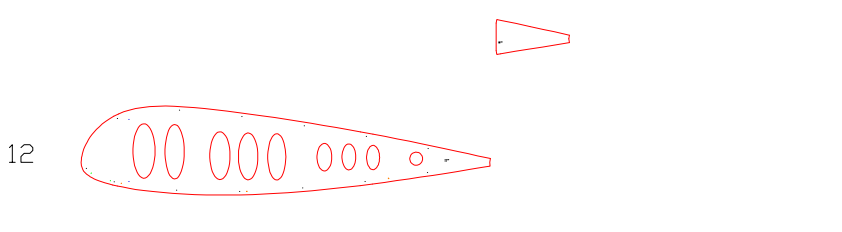
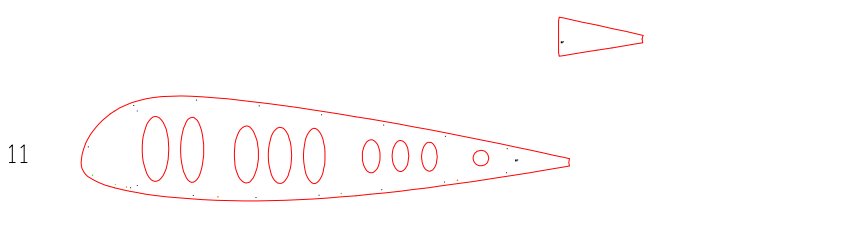
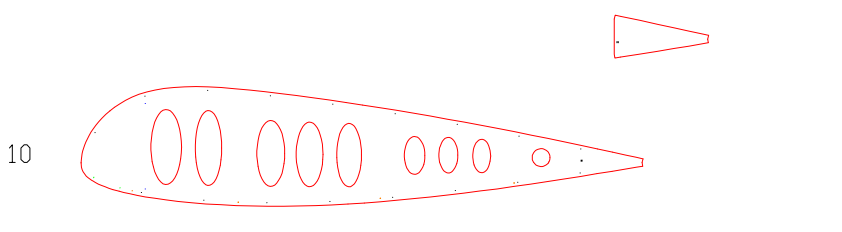
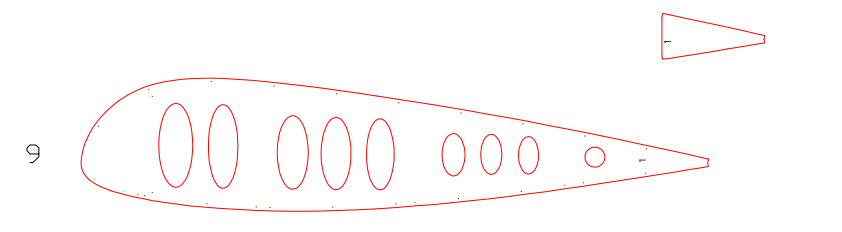
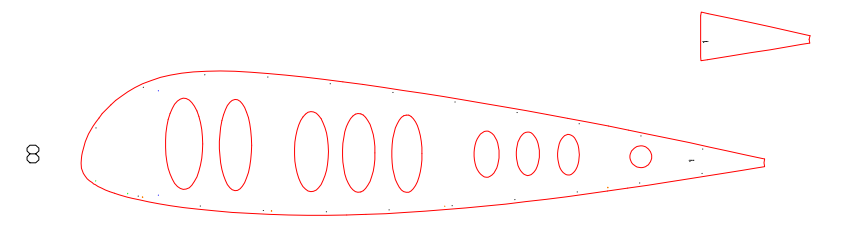
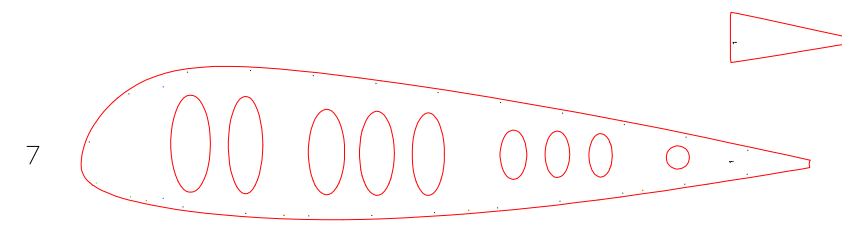
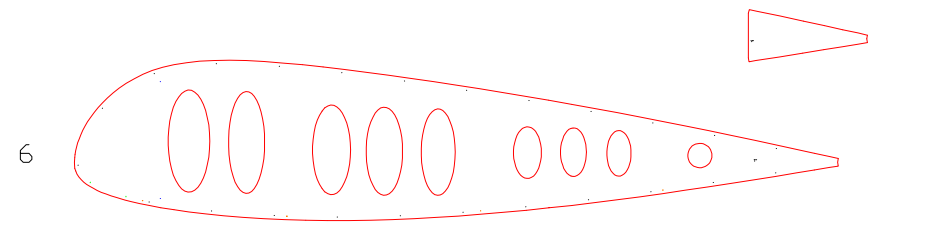
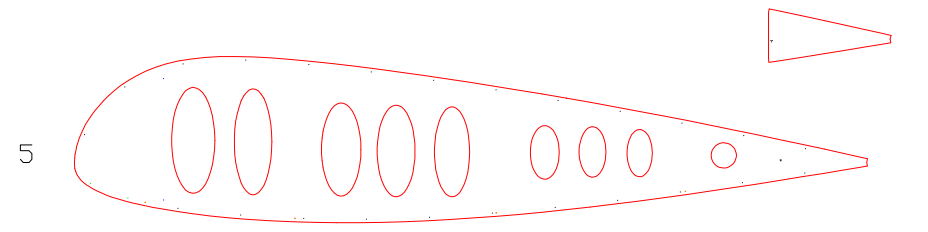
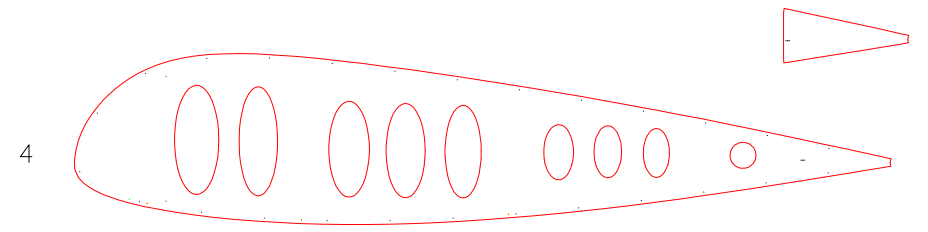
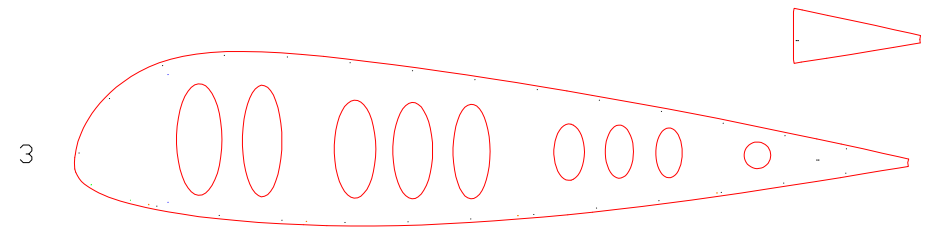
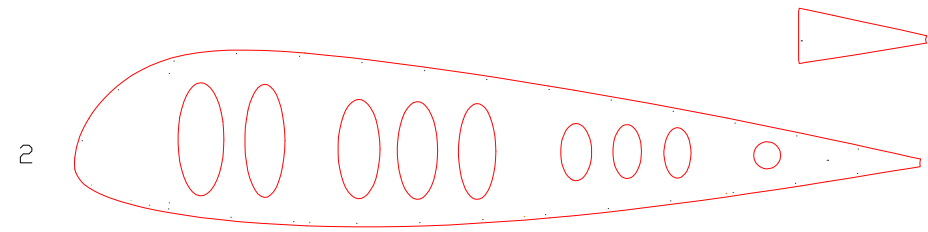
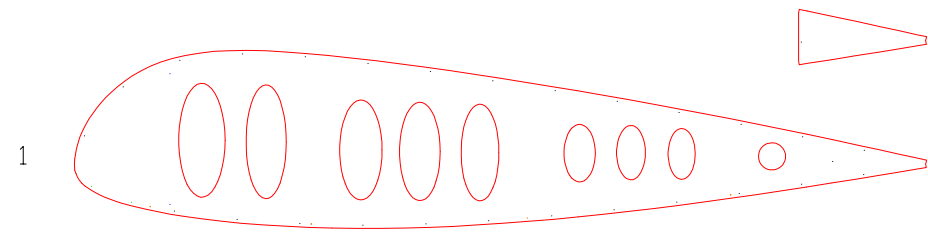
4 5
[]

8 9
[]



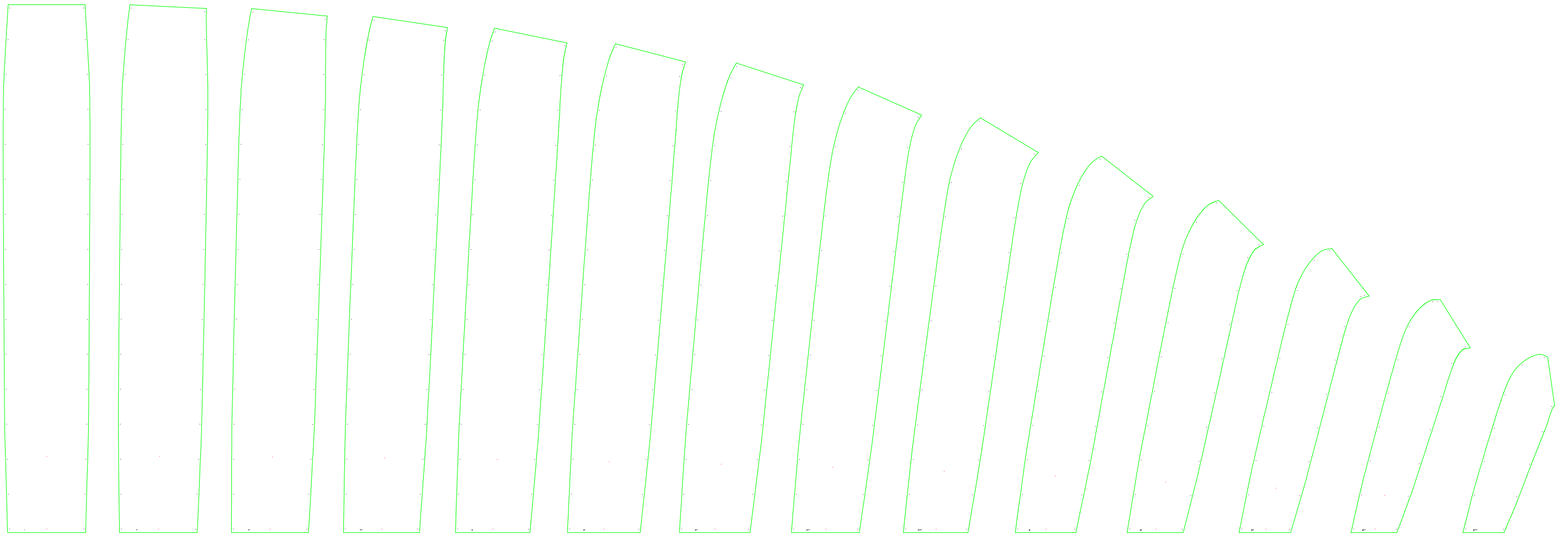
List of nylon rods (bloc 1)

Group 1		
Jonc 1		99.0
Jonc 2		98.3
Jonc 3		97.0
Jonc 4		94.9
Jonc 5		92.2
Jonc 6		88.7
Jonc 7		84.6
Jonc 8		79.4
Jonc 9		72.8
Jonc 10		65.1
Group 2		
Jonc 11		56.5
Jonc 12		47.3
Jonc 13		37.6



1-4 RIBS (FOR CUTTING TABLE)

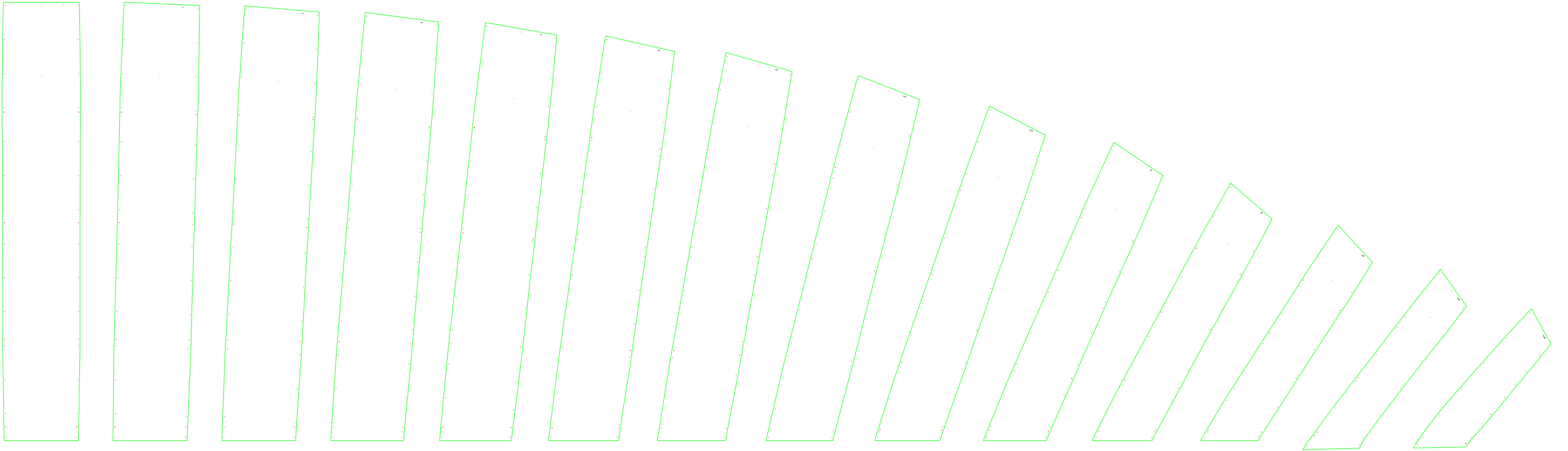
Leading edge



Trailing edge

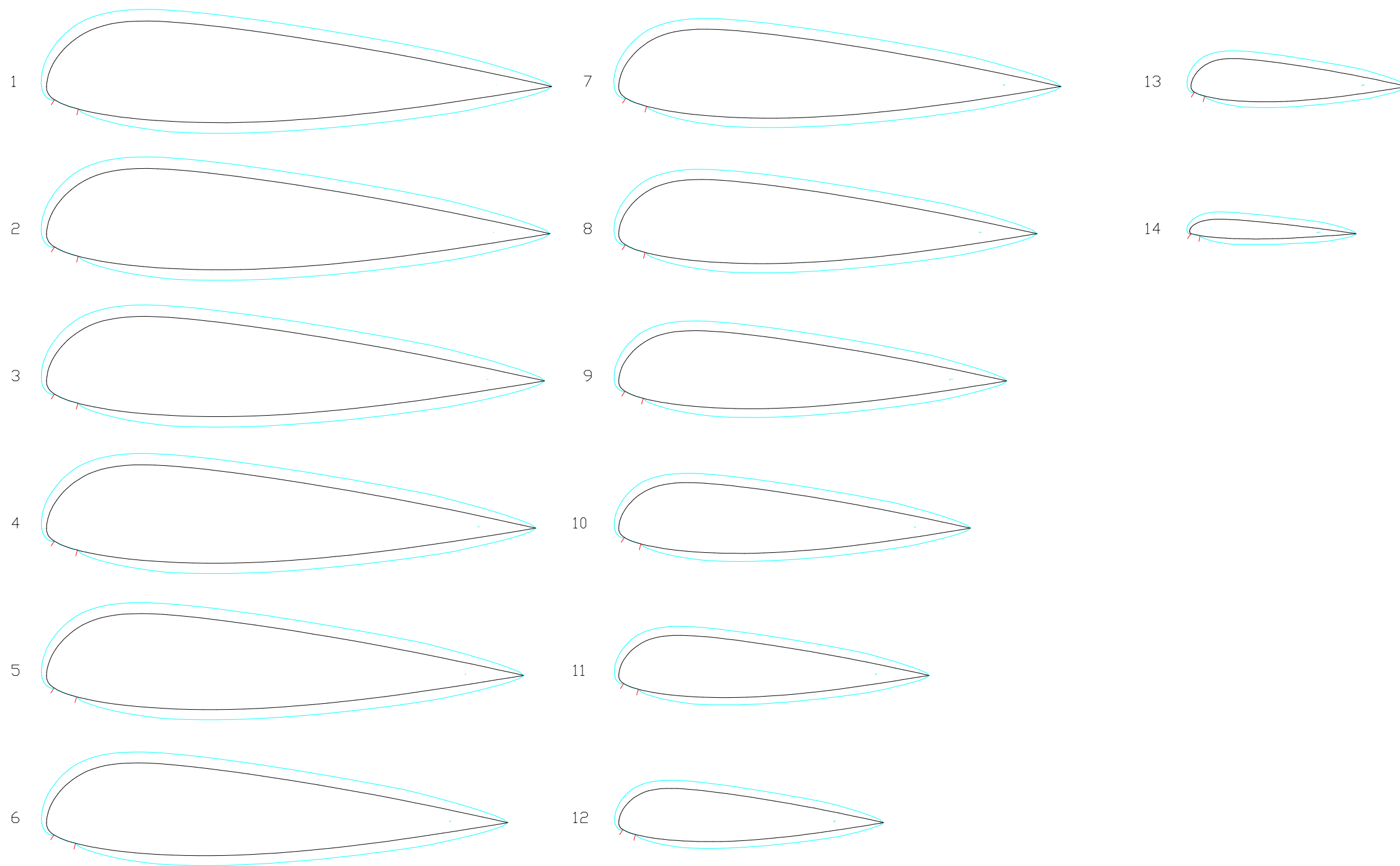
1-5 EXTRADOS PANELS (FOR CUTTING TABLE)

Trailing edge

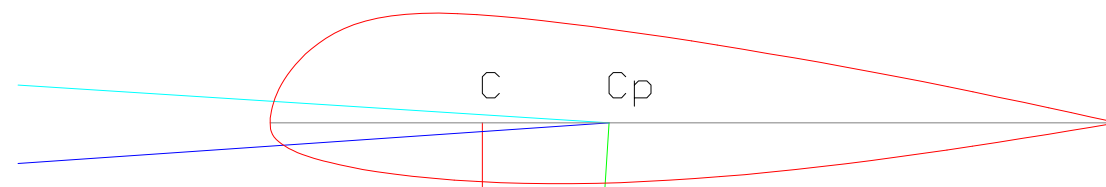


Leading edge

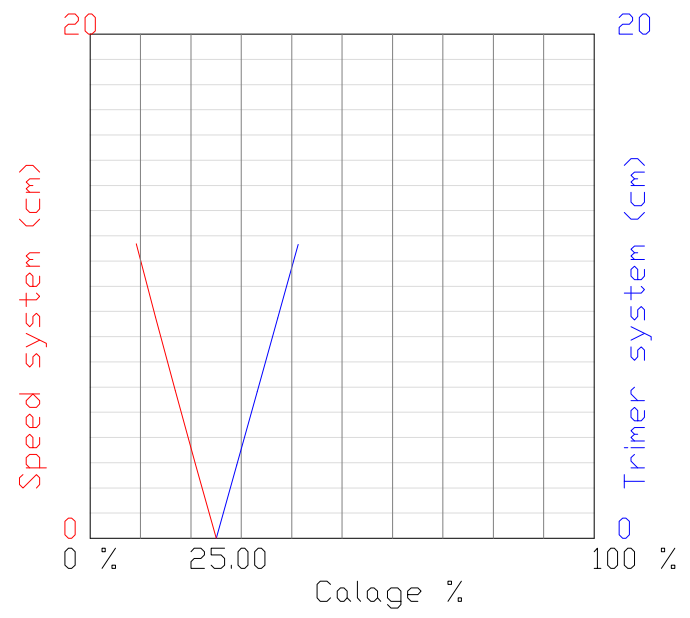
2-5 INTRADOS PANELS (FOR CUTTING TABLE)



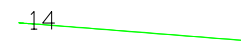
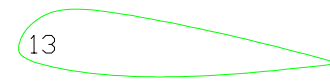
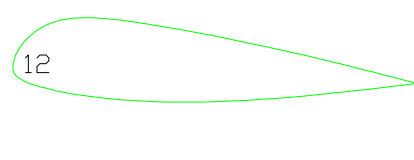
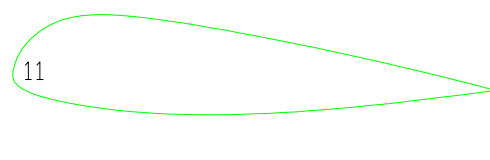
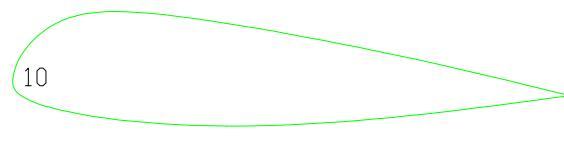
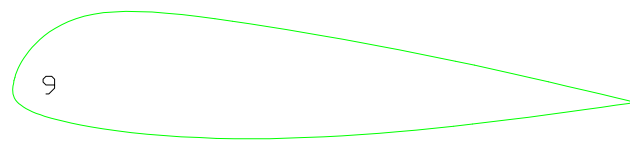
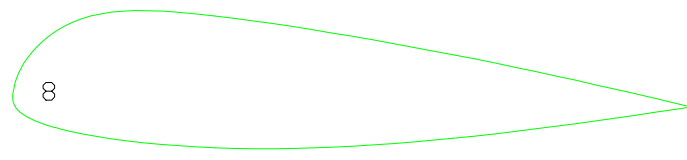
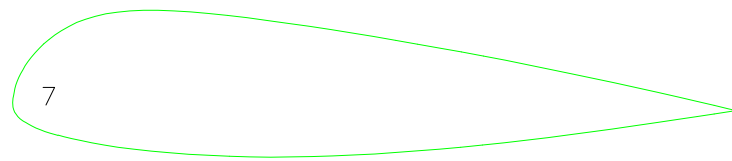
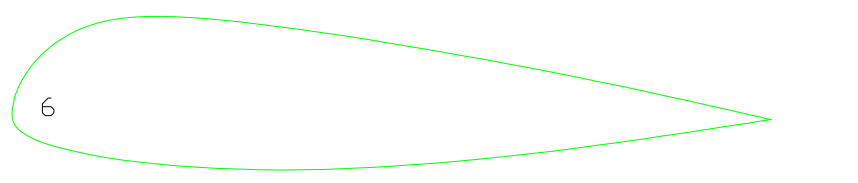
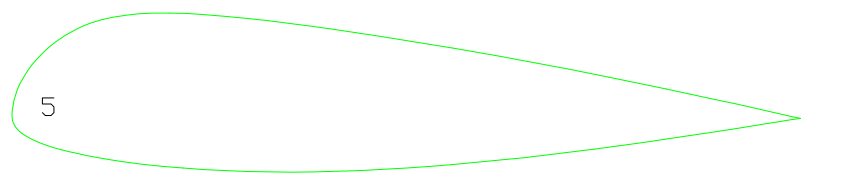
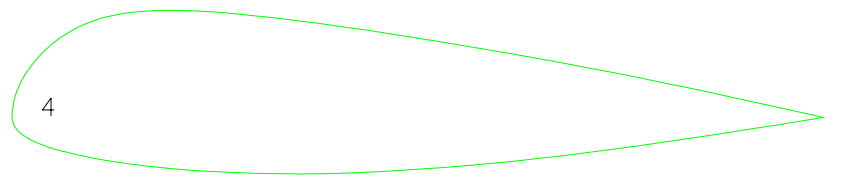
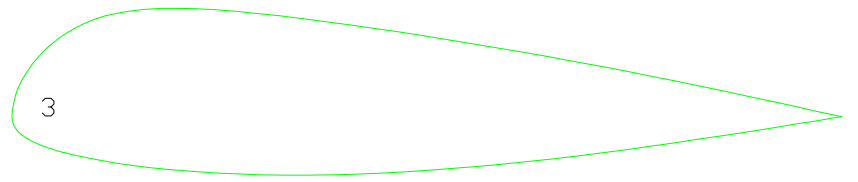
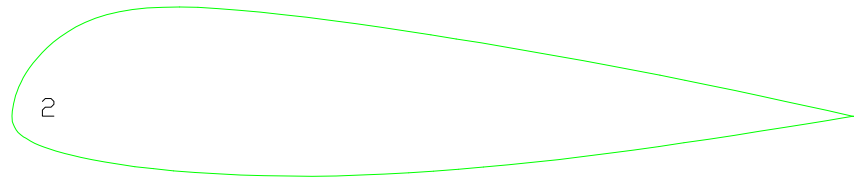
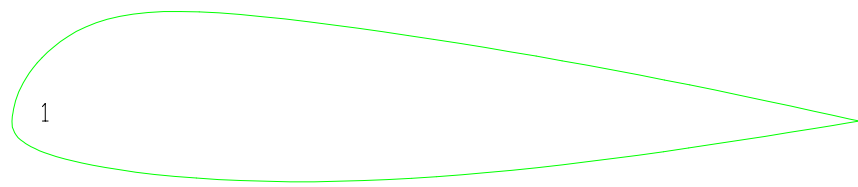
1-8 MIDDLE AND MIDDLE OVALIZED AIRFOILS



calage= 25.00
 center pressure= 40.00
 glide ratio= 7.50
 glide angle= 7.59
 angle of attack= 3.92
 assiette= 3.68



2-1 CALAGE ESTIMATION



2-2 RIBS WASHIN ANGLE

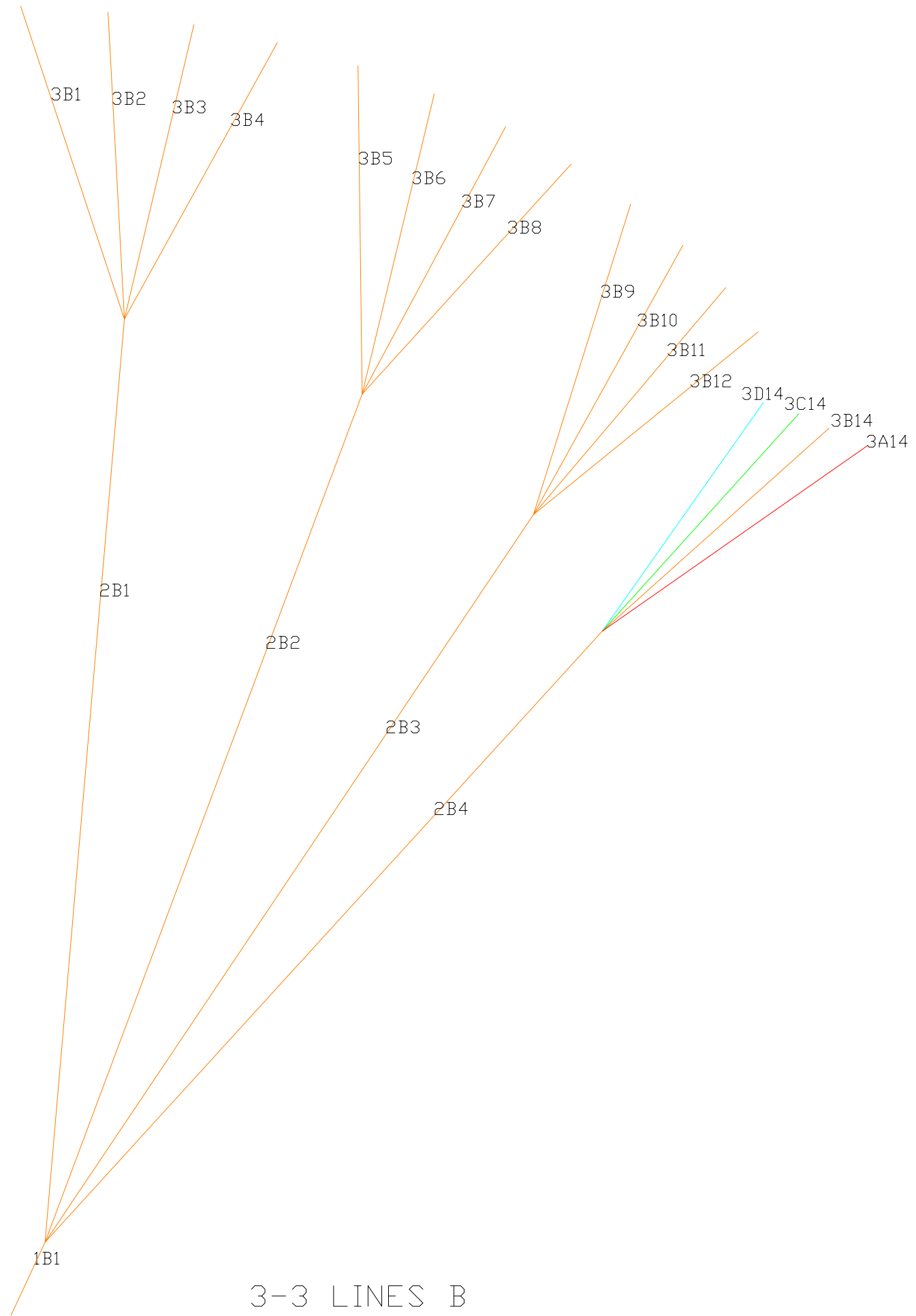
Line - Label - Length

1	1A1	47.0
2	2A1	546.7
3	2A2	534.8
4	2A3	515.8
5	3A1	192.4
6	3A2	179.2
7	3A3	176.6
8	3A4	184.7
9	3A5	191.7
10	3A6	179.8
11	3A7	176.2
12	3A8	180.9
13	3A9	192.1
14	3A10	180.8
15	3A11	174.7
16	3A12	173.6



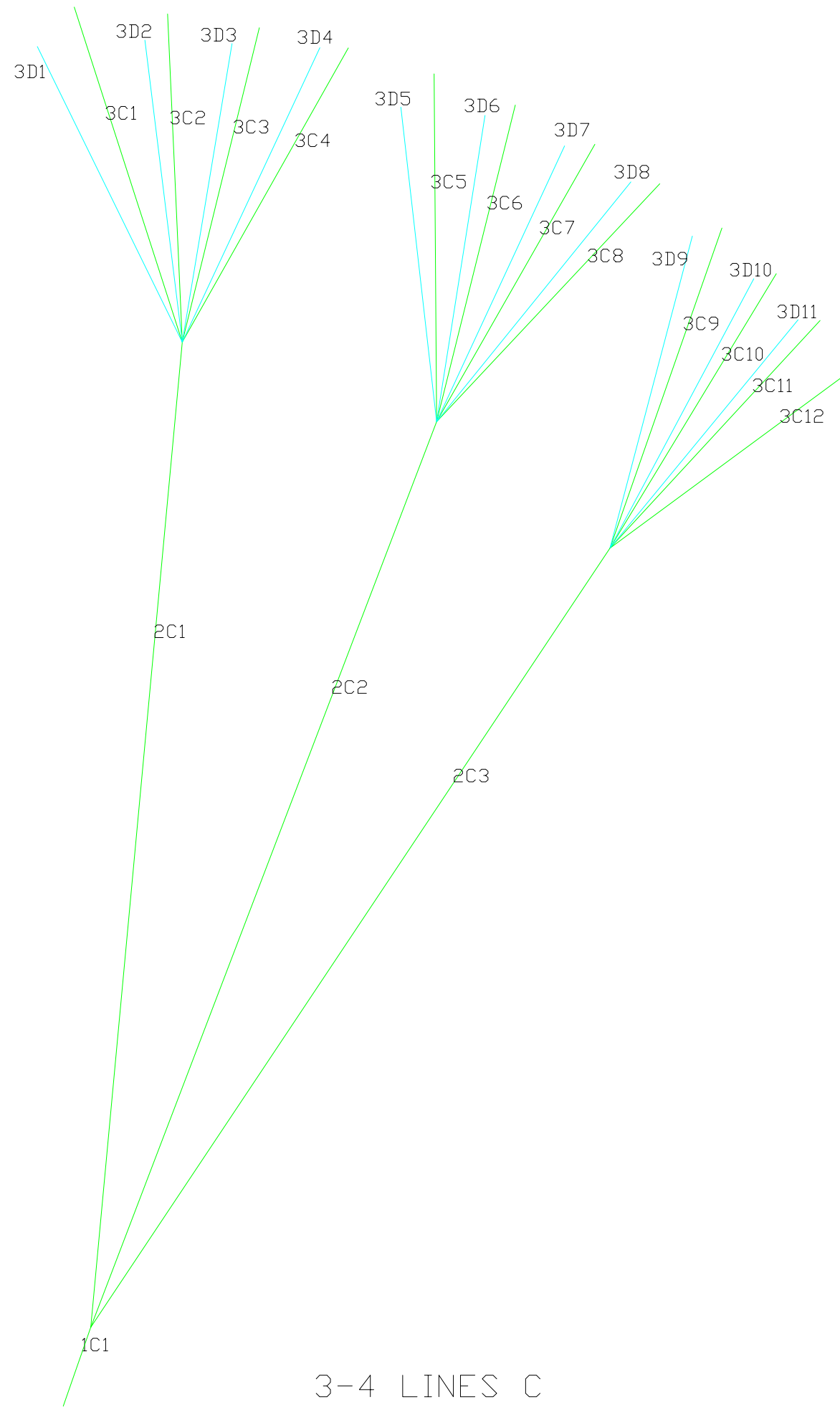
Line - Label - Length

17	1B1	47.0
18	2B1	539.7
19	2B2	527.8
20	2B3	512.8
21	2B4	490.9
22	3B1	192.1
23	3B2	179.0
24	3B3	176.3
25	3B4	184.2
26	3B5	191.2
27	3B6	179.9
28	3B7	176.7
29	3B8	181.5
30	3B9	189.6
31	3B10	179.5
32	3B11	174.1
33	3B12	176.4
34	3A14	174.0
35	3B14	173.3
36	3C14	177.1
37	3D14	185.3



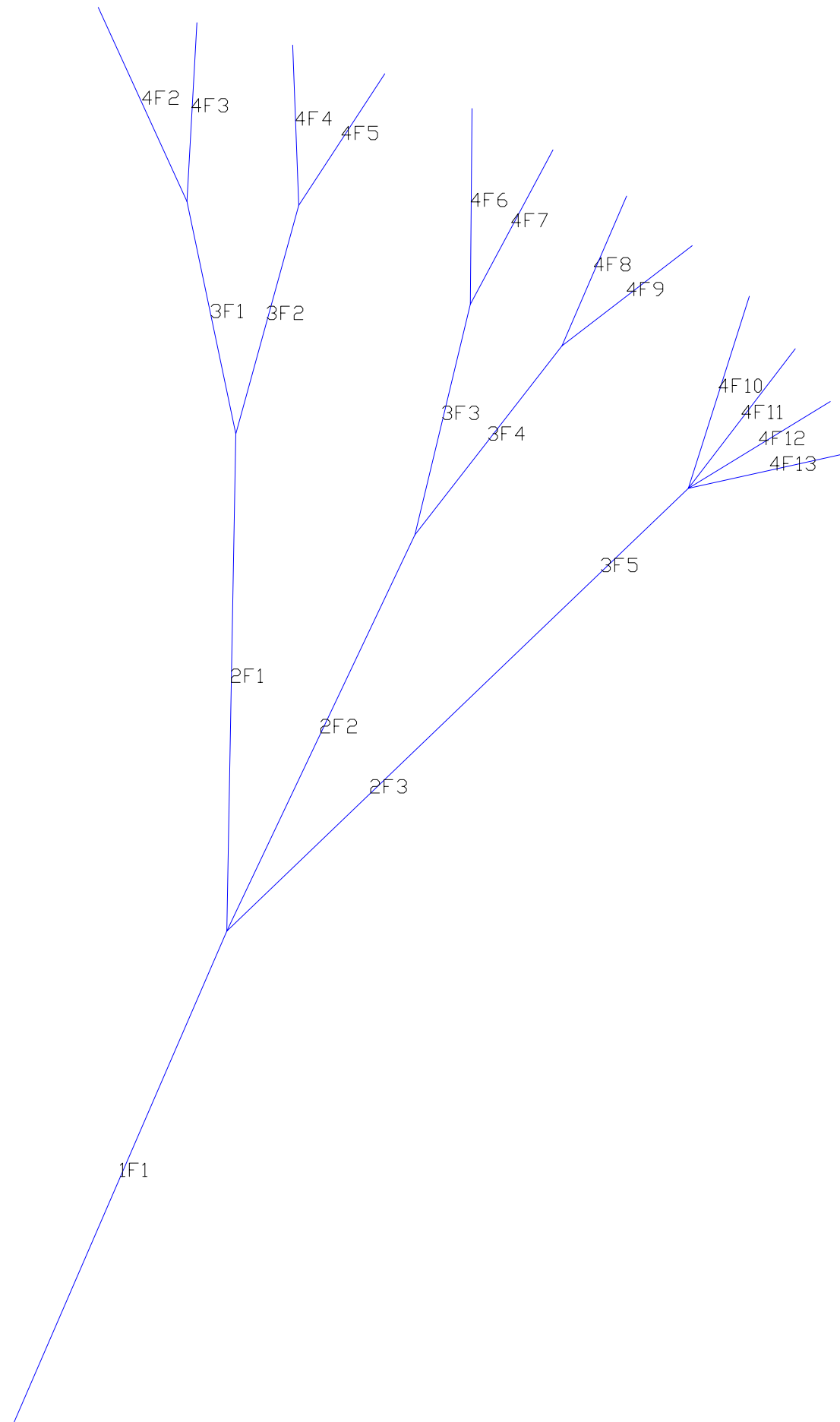
Line - Label - Length

38	1C1	47.0
39	2C1	555.8
40	2C2	544.8
41	2C3	527.9
42	3C1	186.5
43	3C2	173.0
44	3C3	170.4
45	3C4	178.9
46	3D1	207.2
47	3D2	194.8
48	3D3	192.1
49	3D4	199.2
50	3C5	185.0
51	3C6	173.2
52	3C7	169.7
53	3C8	174.4
54	3D5	204.2
55	3D6	192.5
56	3D7	188.4
57	3D8	191.6
58	3C9	182.4
59	3C10	173.1
60	3C11	168.0
61	3C12	175.3
62	3D9	196.3
63	3D10	186.4
64	3D11	180.2



Line - Label - Length

65	1F1	293.0
66	2F1	273.0
67	2F2	240.0
68	2F3	215.0
69	3F1	130.0
70	3F2	130.0
71	3F3	130.0
72	3F4	130.0
73	3F5	130.0
74	4F2	115.9
75	4F3	98.3
76	4F4	88.0
77	4F5	85.5
78	4F6	107.3
79	4F7	95.6
80	4F8	89.2
81	4F9	88.2
82	4F10	110.7
83	4F11	95.5
84	4F12	88.8
85	4F13	88.2



4-5 BRAKES

BRAKE_DISTRIBUTION
CENTER

WING_TIP

0.00

0.00

0.00

0.00

0.00

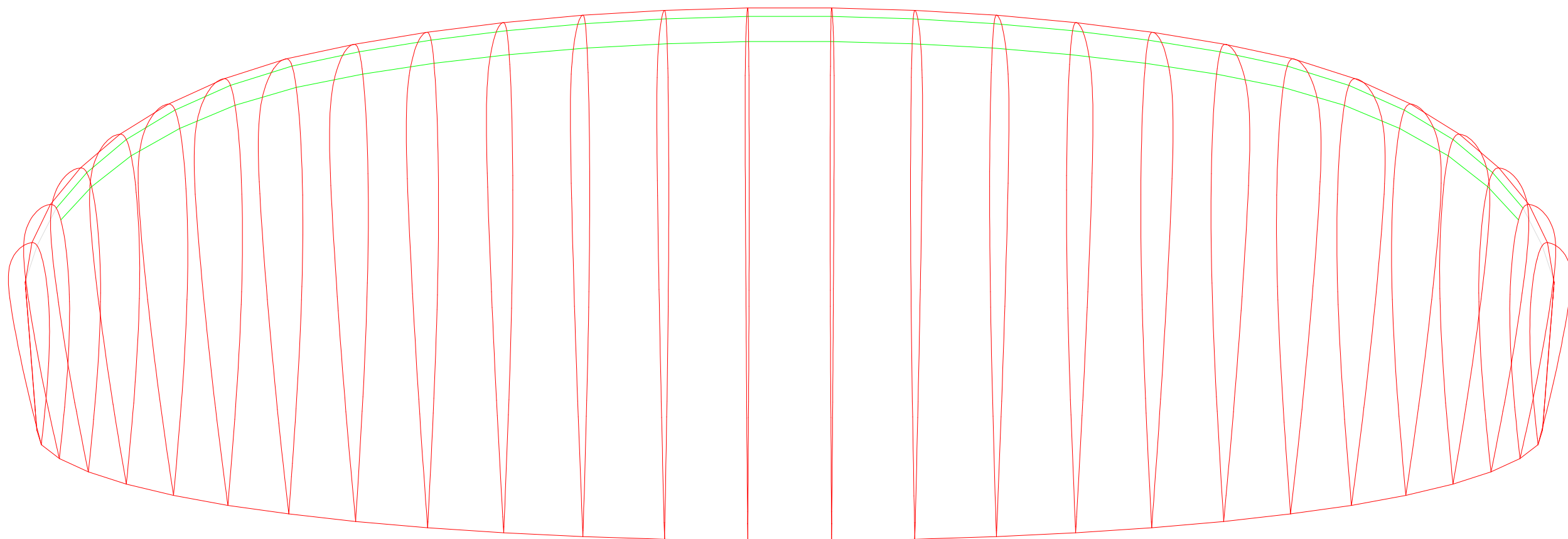
0.00

25.00

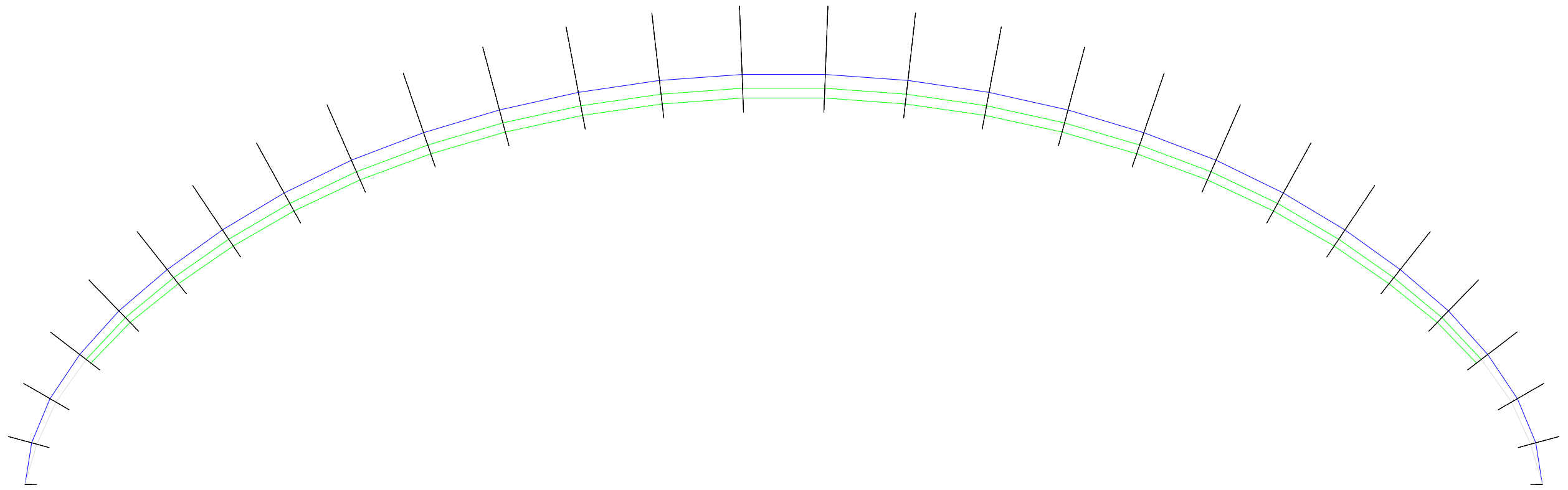
55.00

70.00

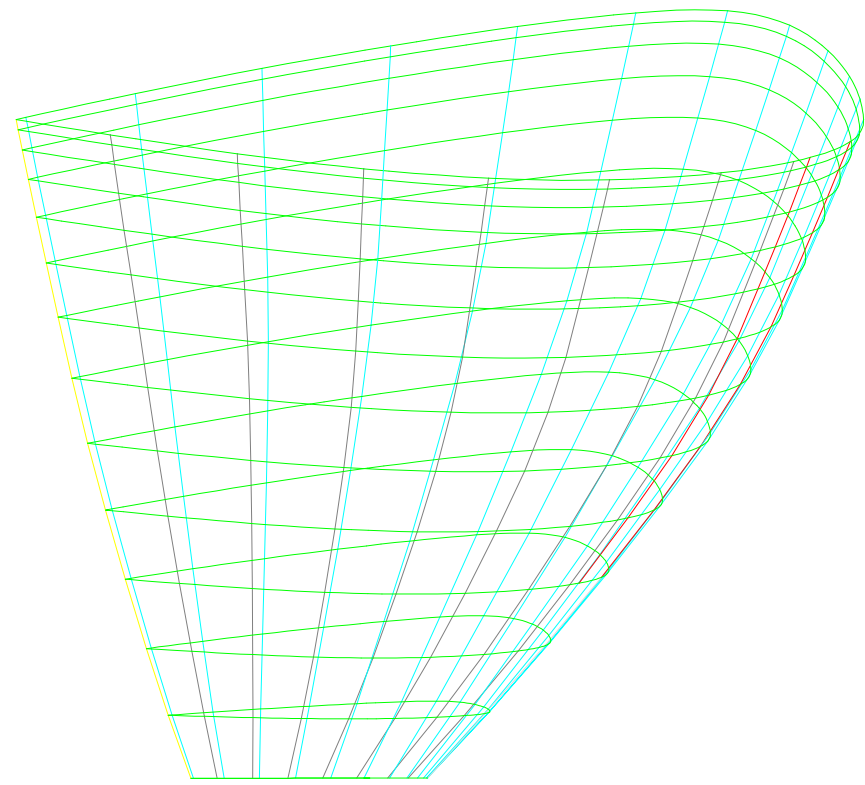
100.00



3-1 UPPER VIEW



4-1 VAULT VIEW



4-2 LATERAL VIEW

PLANS GENERAL NOTES

- 1-1: Planform and vault view (informative)
- 1-2: Ribs for plotter, one side
- 1-3: Extradados panels for plotter, one side
- 1-4: Ribs for laser cutting, one side. Units cm
- 1-5: Extradados for laser cutting, one side. Units cm
- 1-6: Middle unloaded ribs for laser cutting, one side Units cm
- 1-7: Rods pockets and nylons lengths, mylars
- 1-8: Intermediate and ovalized airfoils

- 2-1: Calage estimation, speed and trim systems
- 2-2: Ribs printed with washin angle (informative)
- 2-3: Intrados panels for plotter, one side
- 2-4: Mini-ribs horizontal and diagonal
- 2-5: Intrados for laser cutting, one side
- 2-6: Full diagonal ribs laser, one side
- 2-7: Free

- 3-1: Upper view 3D (informative)
- 3-2: Lines A
- 3-3: Lines B
- 3-4: Lines C
- 3-5: Lines D
- 3-6: V-rib type-6
- 3-7: Free

- 4-1: Vault view (informative)
- 4-2: Lateral view (informative)
- 4-3: Brake distribution (informative)
- 4-4: Free
- 4-5: Brake lines
- 4-6: Free
- 4-7: General notes

UNITS

Main units are centimeters. Scale x10 to use in mm

WIDTHS FOR SEWING AND OFFSETS

- Lateral width in extradados (mm): 15.00
- Width in leading edge ex (mm): 25.00
- Width in trailing edge ex (mm): 25.00
- Lateral width in intrados (mm): 15.00
- Width in leading edge in (mm): 25.00
- Width in trailing edge in (mm): 25.00
- Lateral width in ribs (mm): 15.00
- Lateral width in V-ribs (mm): 15.00
- General offset lateral points (mm): 1.20

- Distance between equidistant points (cm): 25.00

"ROMAN" NUMBERS CODIFICATION

Numbering panels, ribs, mini-ribs, V-ribs

- Number 1 =
- Number 2 =
- Number 3 =
- Number 4 =
- Number 5 =
- Number 6 =
- Number 7 =
- Number 8 =
- Number 9 =
- Number 10 =
- Number 11 =
- Number 12 =
- Number 13 =
- Number 14 =