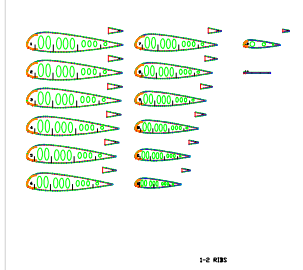
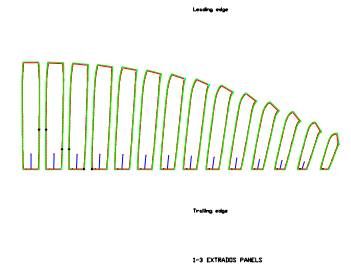


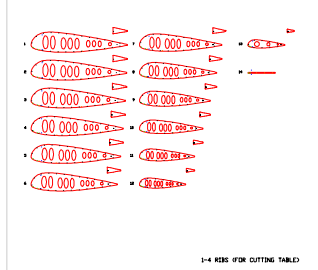
3-1 PLANISH AND VAULT



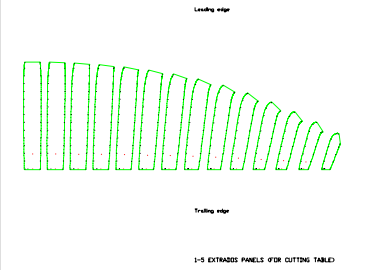
3-2 RIBS



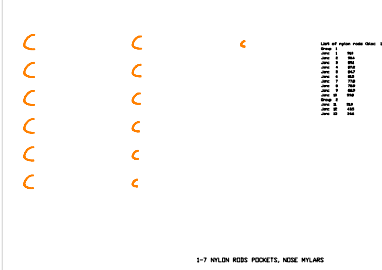
3-3 EXTRADO PANELS



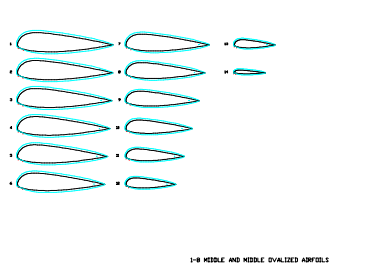
3-4 RIBS FROM CUTTING TABLE



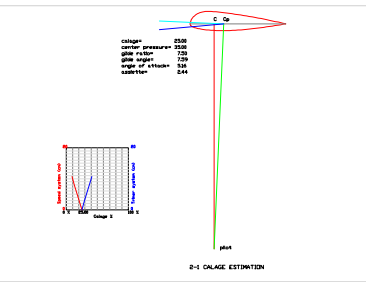
3-5 EXTRADO PANELS FROM CUTTING TABLE



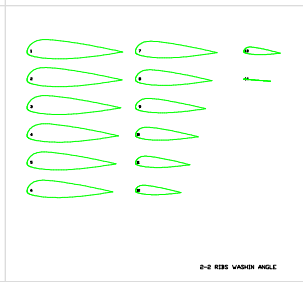
3-6 RIBS WITH DIAGONAL RIBS



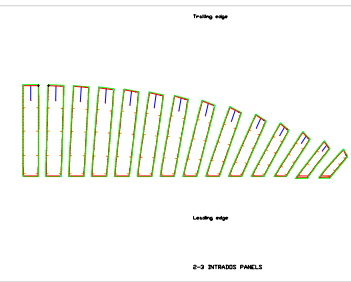
3-7 RIBS WITH DIAGONAL RIBS



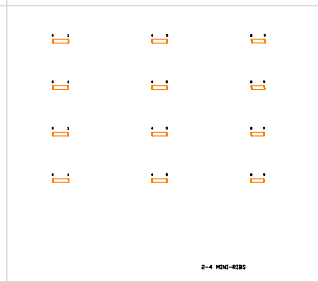
3-8 GALAXE ESTIMATION



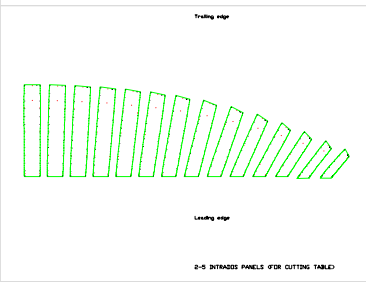
3-9 RIBS UNDER ANGLE



3-10 EXTRADO PANELS



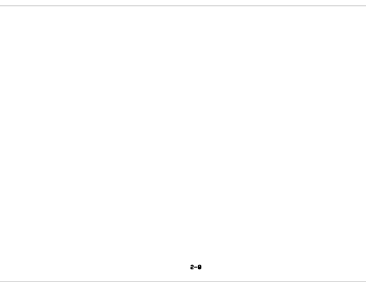
3-11 RIBS



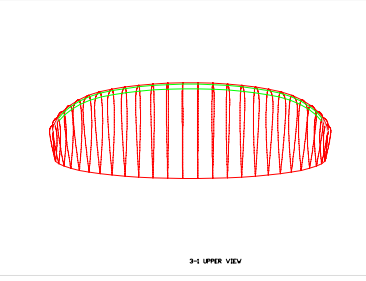
3-12 EXTRADO PANELS FROM CUTTING TABLE



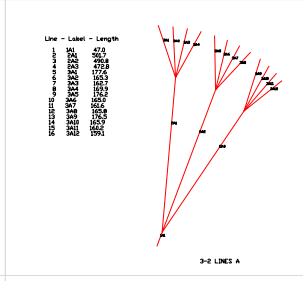
3-13 FULL DIAGONAL RIBS



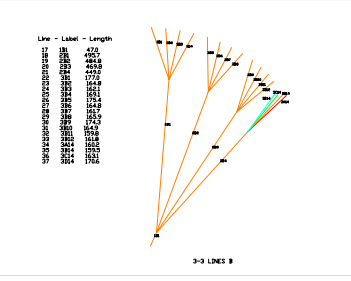
3-14 RIBS WITH DIAGONAL RIBS



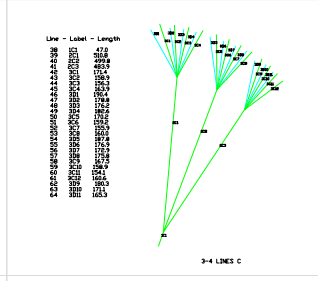
3-15 UPPER VIEW



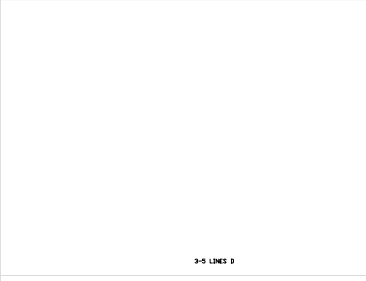
3-16 LINES A



3-17 LINES B



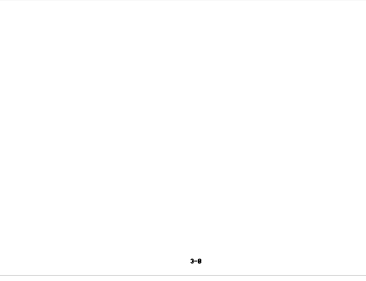
3-18 LINES C



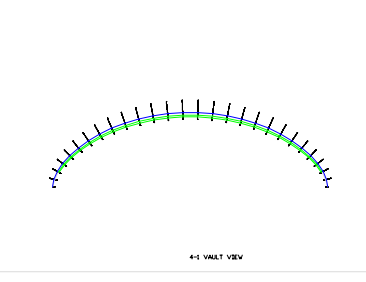
3-19 LINES D



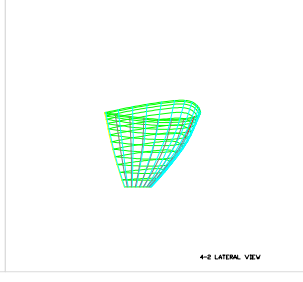
3-20 V-rib Type 4



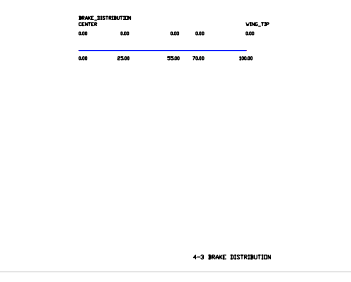
3-21



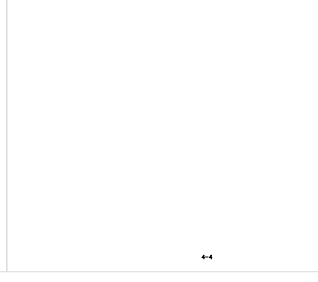
4-1 VAULT VIEW



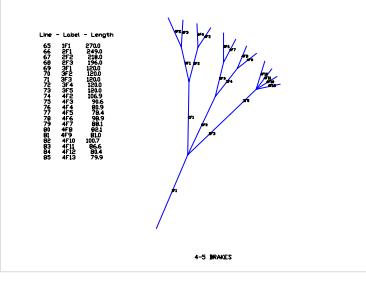
4-2 LATERAL VIEW



4-3 BRACE DISTRIBUTION



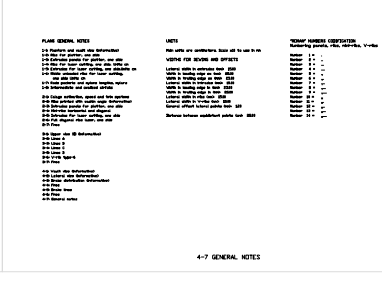
4-4



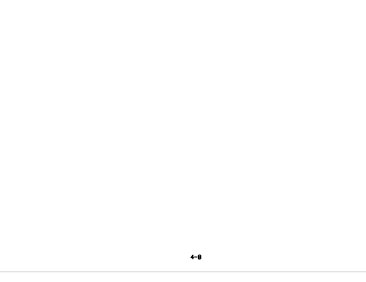
4-5 BRACES



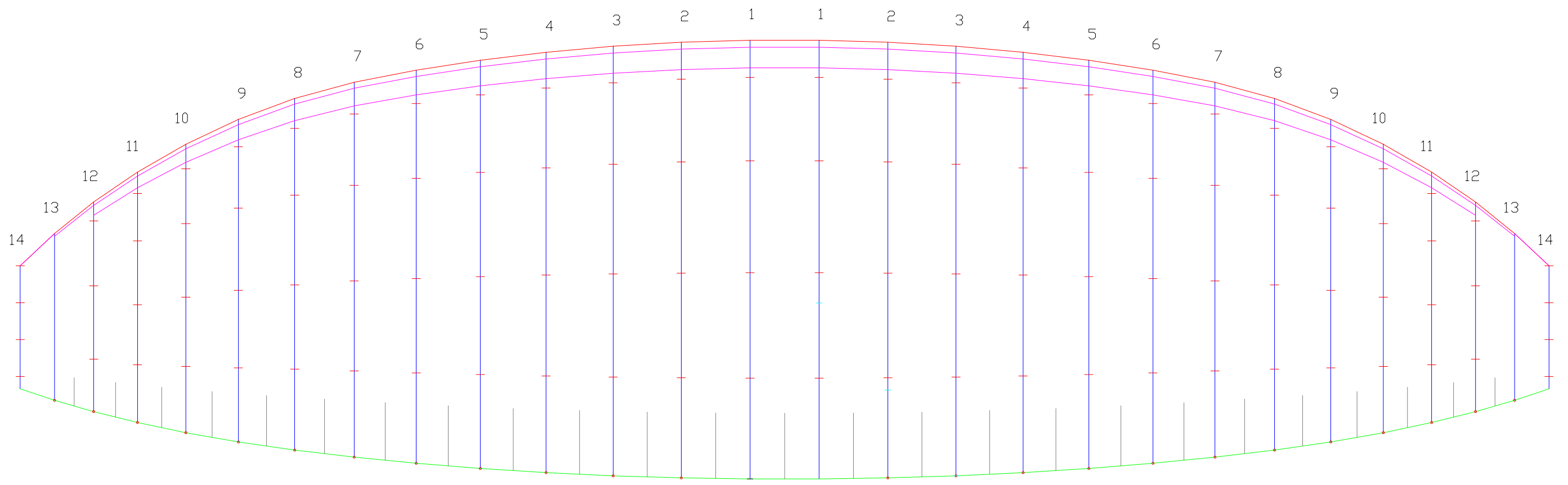
4-6



4-7 GENERAL NOTES

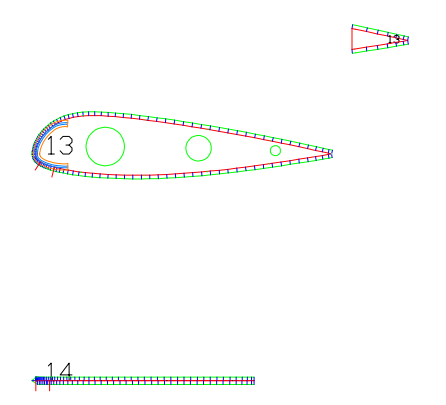
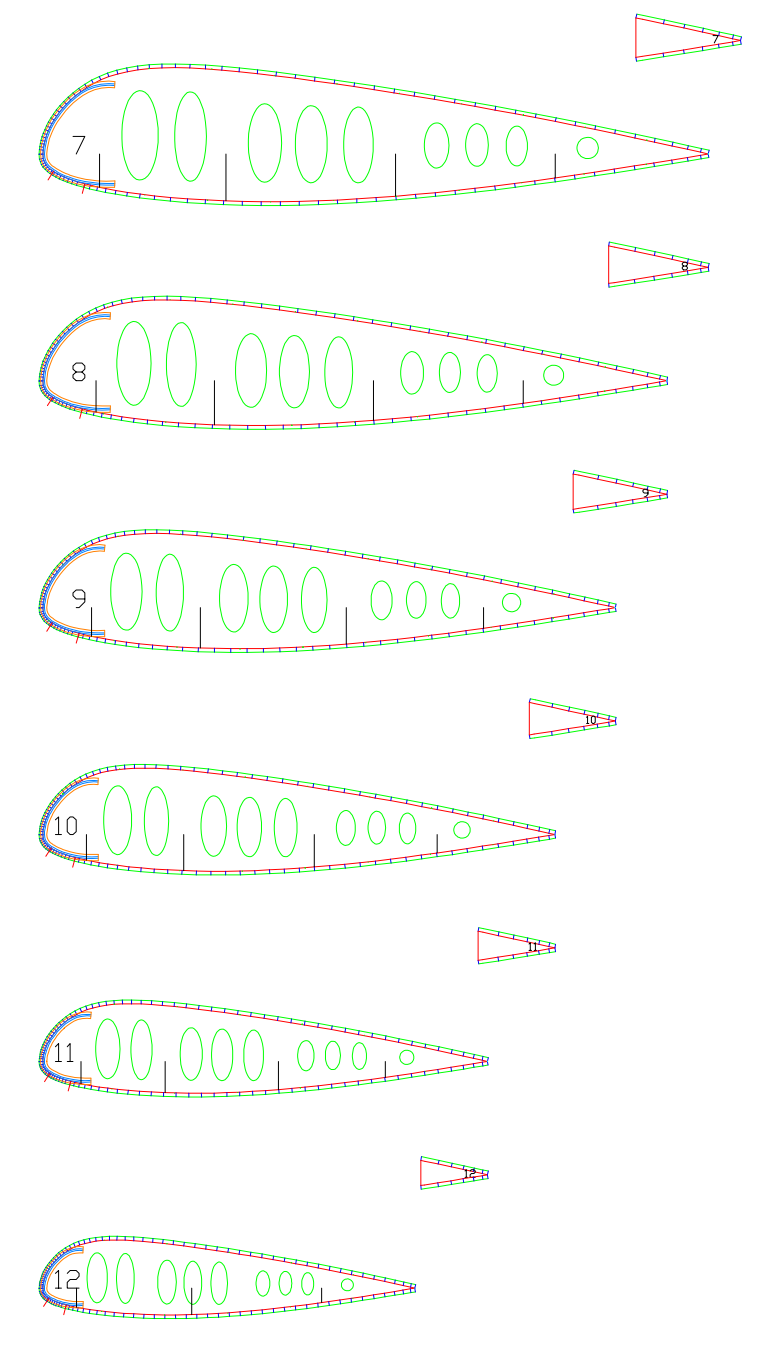
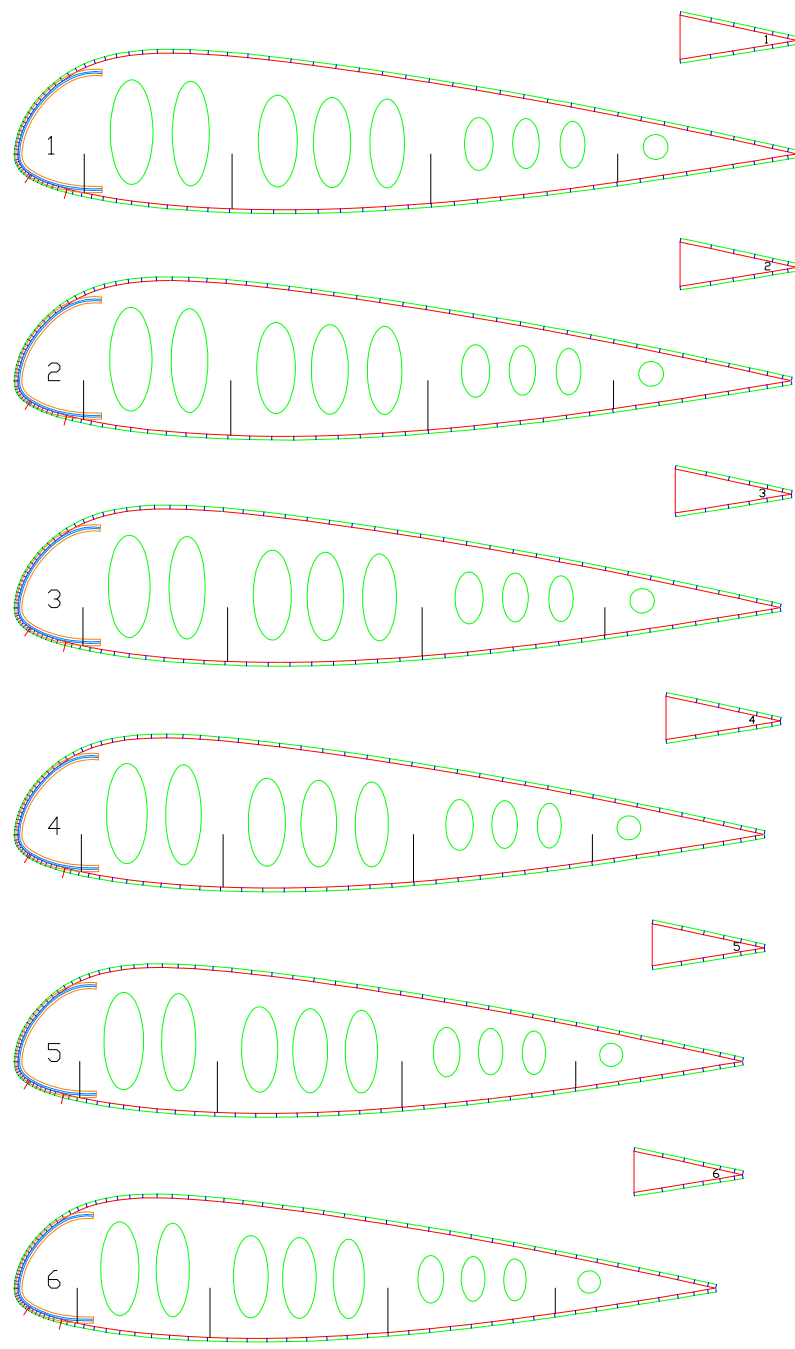


4-8



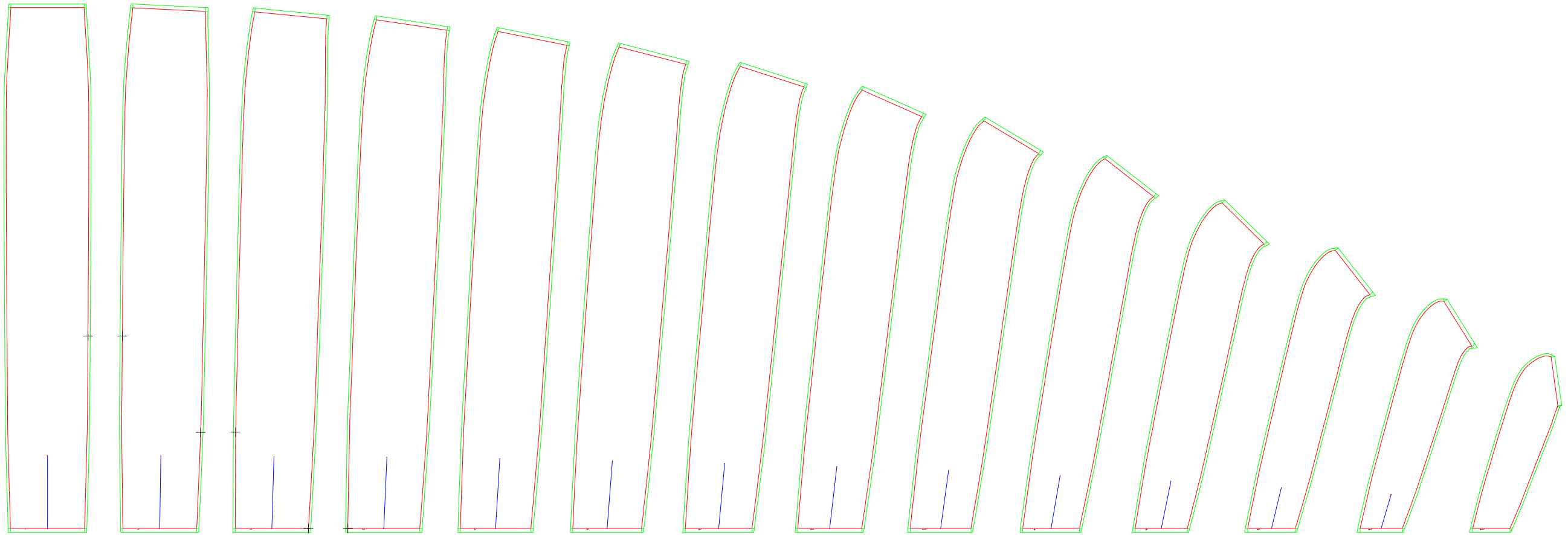
LABORATORI D'ENVOL gnuA4-24
 Flat area (m²) : 27.02
 Flat span (m) : 10.78
 Flat aspect ratio : 4.30
 Cells number : 27

1-1 PLANFORM AND VAULT



1-2 RIBS

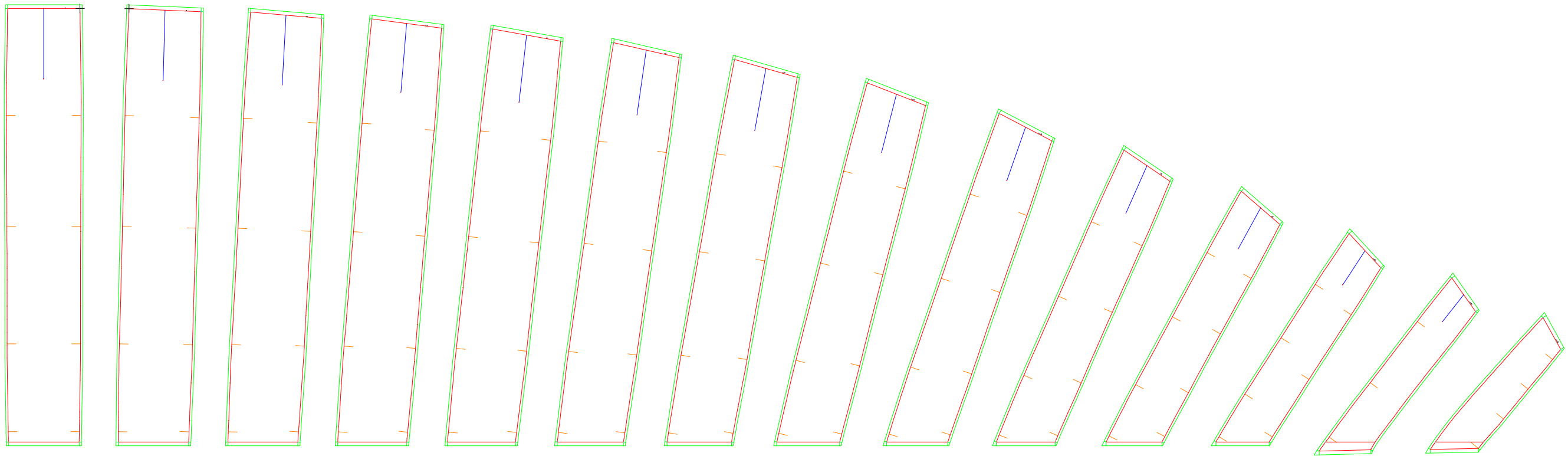
Leading edge



Trailing edge

1-3 EXTRADOS PANELS

Trailing edge



Leading edge

2-3 INTRADOS PANELS

0 1
[]

4 5
[]

8 9
[]

0 1
[]

4 5
[]

8 9
[]

0 1
[]

4 5
[]

8 9
[]

0 1
[]

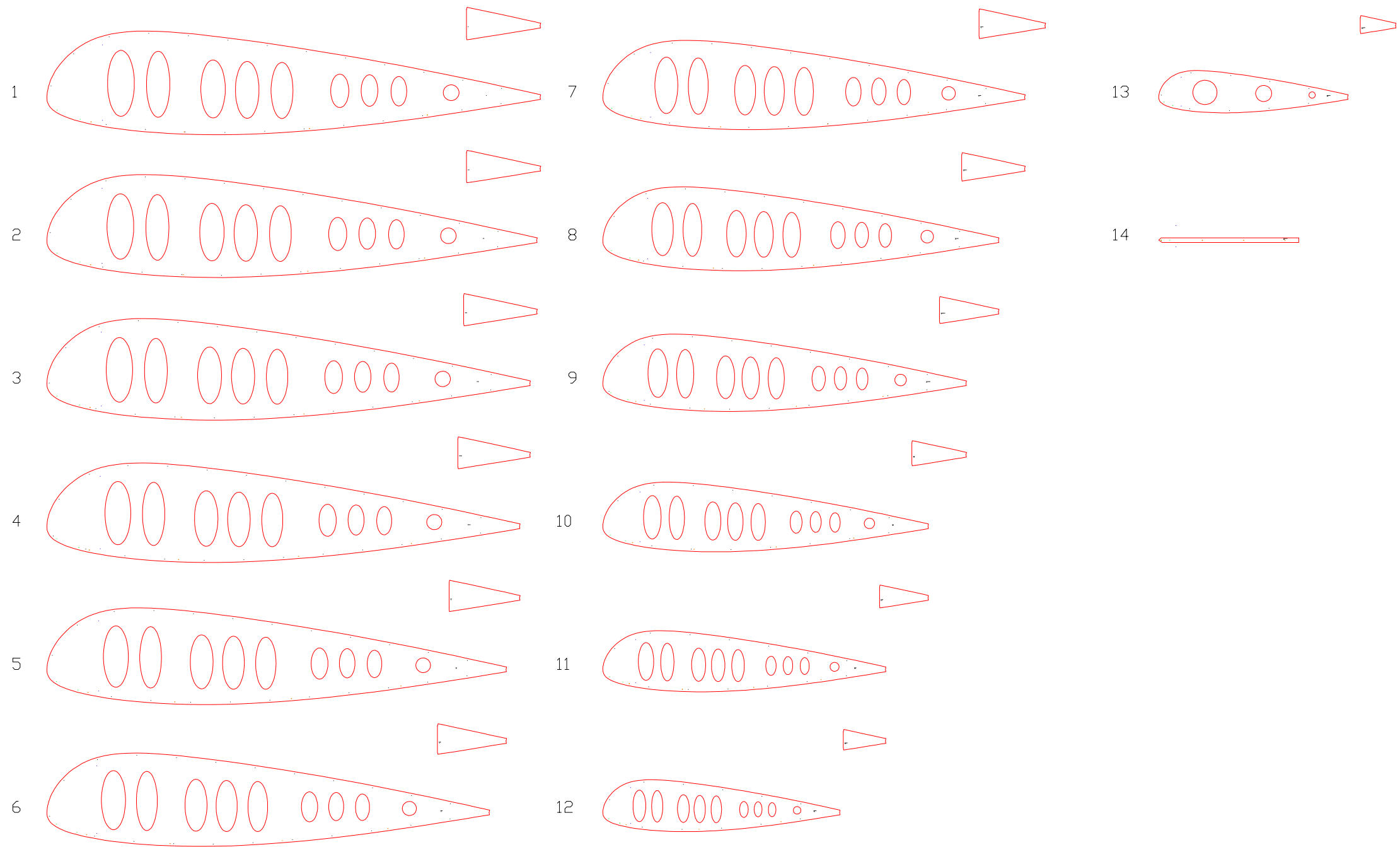
4 5
[]

8 9
[]



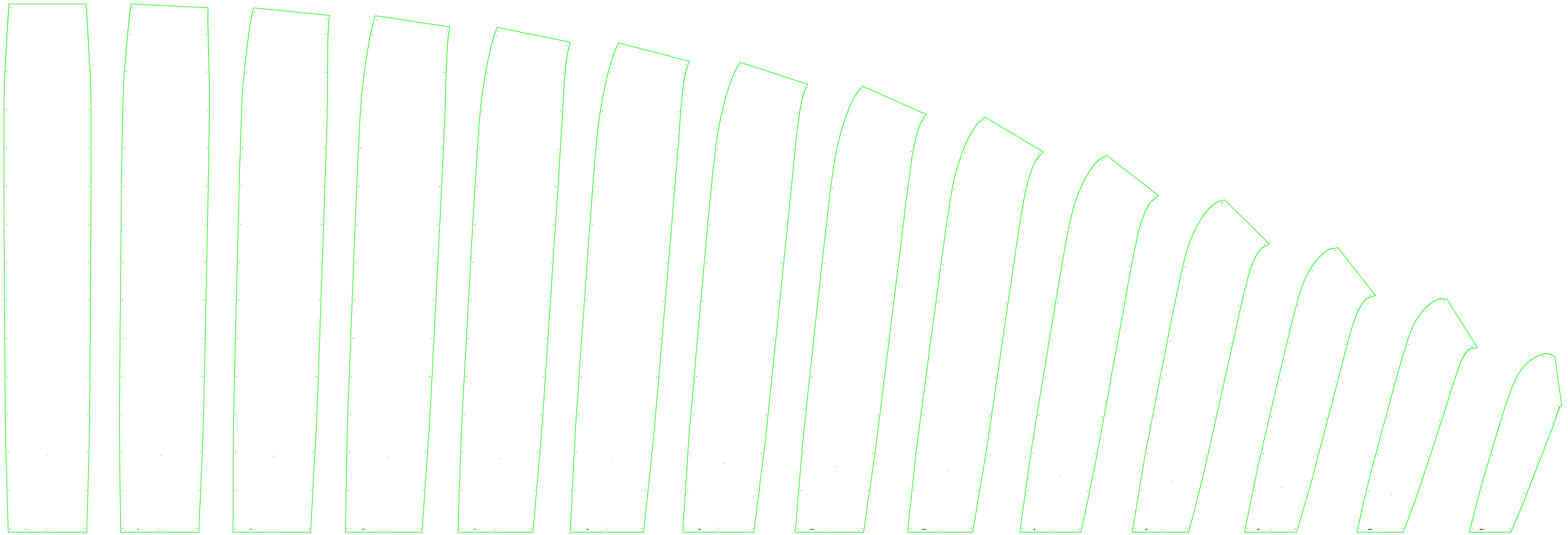
List of nylon rods (bloc 1)

| | | |
|---------|------|--|
| Group 1 | | |
| Jonc 1 | 91.0 | |
| Jonc 2 | 90.4 | |
| Jonc 3 | 89.1 | |
| Jonc 4 | 87.2 | |
| Jonc 5 | 84.7 | |
| Jonc 6 | 81.5 | |
| Jonc 7 | 77.8 | |
| Jonc 8 | 72.9 | |
| Jonc 9 | 66.9 | |
| Jonc 10 | 59.8 | |
| Group 2 | | |
| Jonc 11 | 51.9 | |
| Jonc 12 | 43.5 | |
| Jonc 13 | 34.6 | |



1-4 RIBS (FOR CUTTING TABLE)

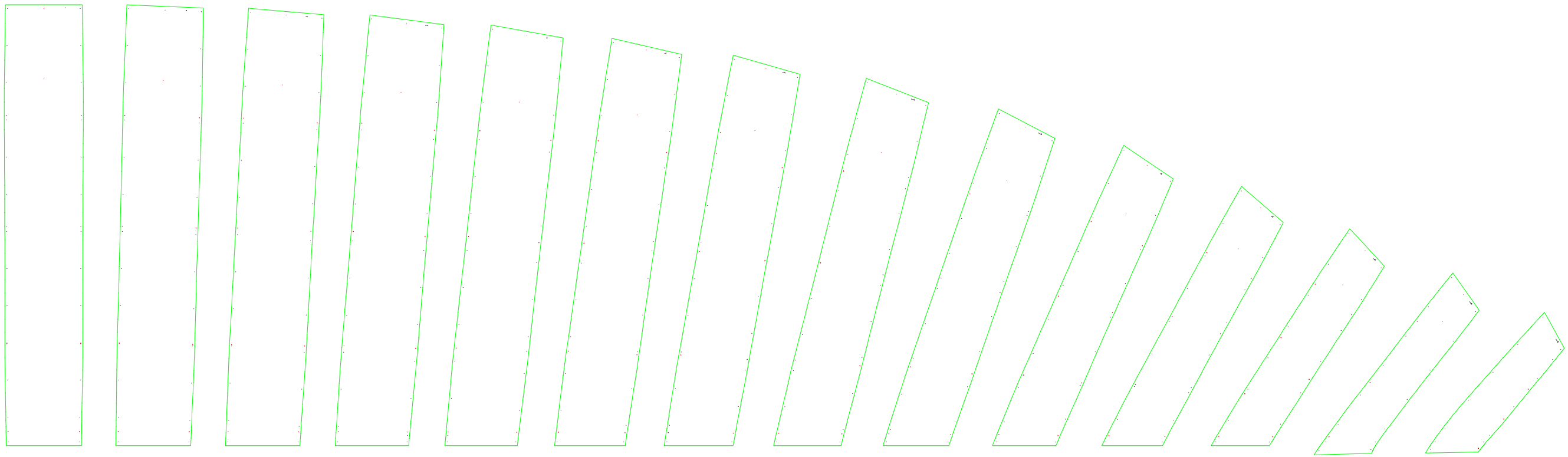
Leading edge



Trailing edge

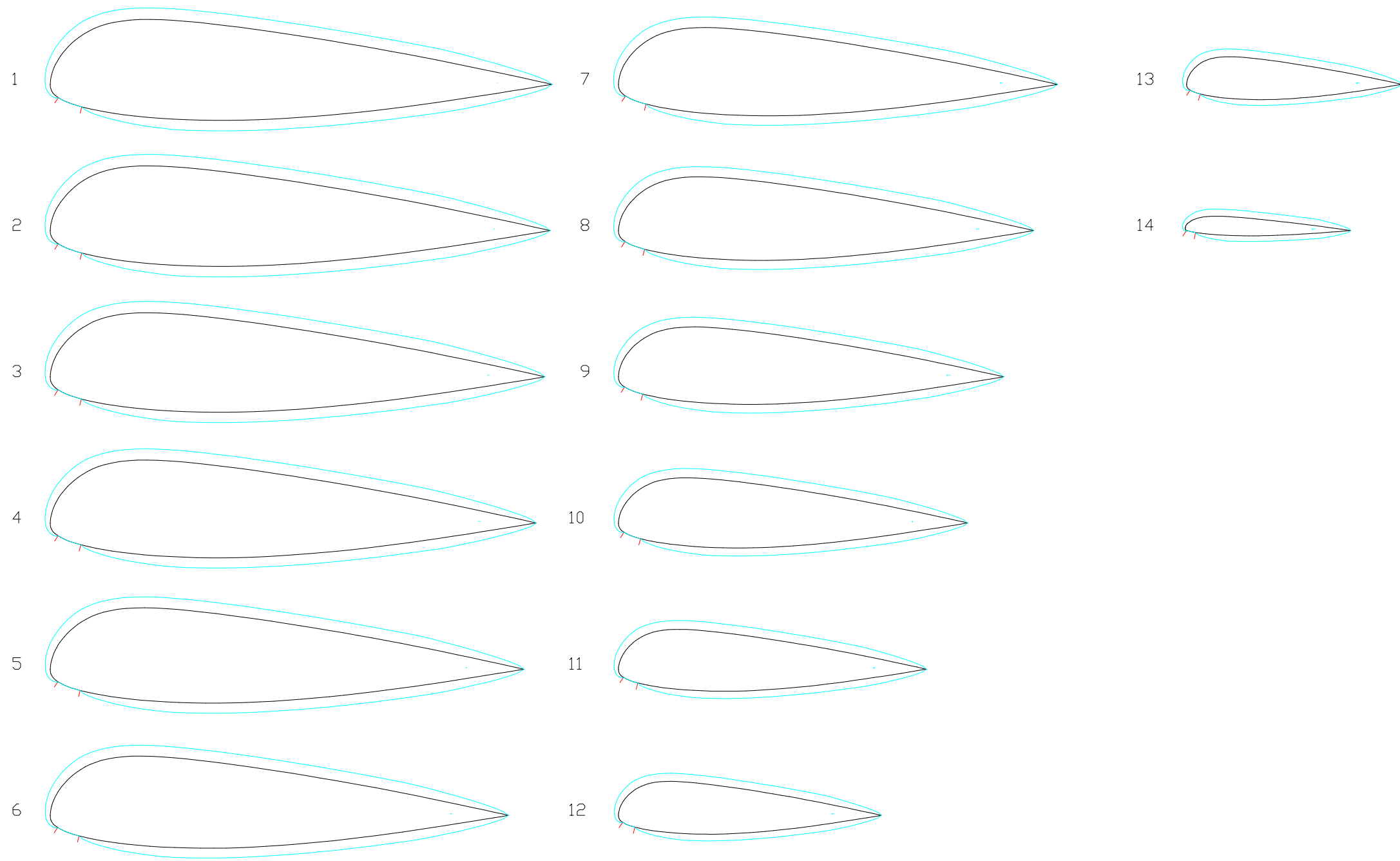
1-5 EXTRADOS PANELS (FOR CUTTING TABLE)

Trailing edge

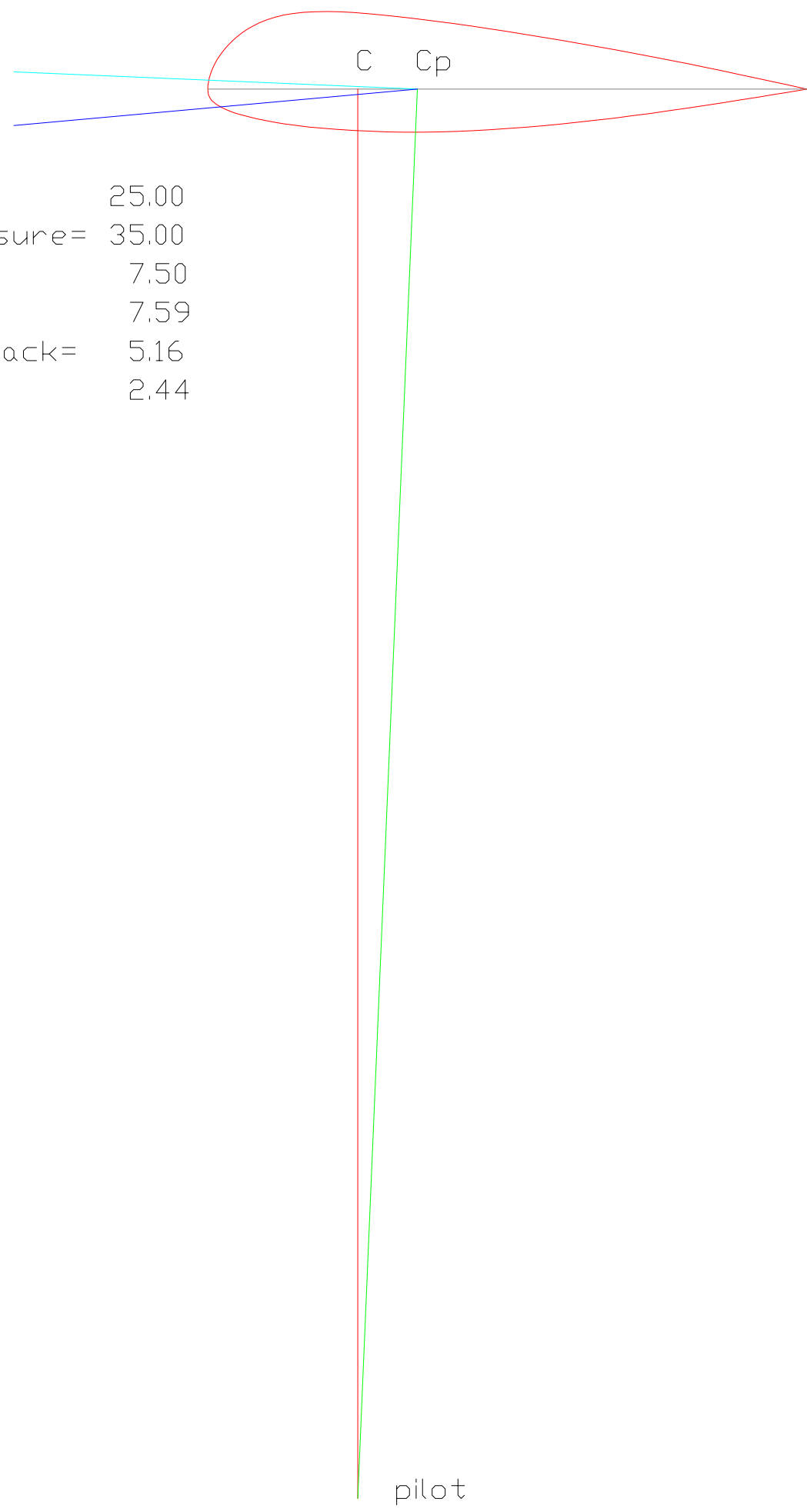


Leading edge

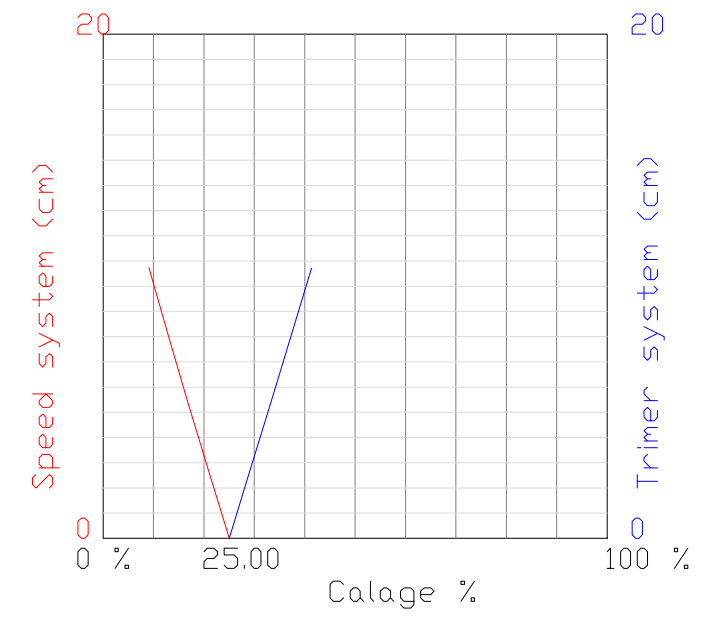
2-5 INTRADOS PANELS (FOR CUTTING TABLE)



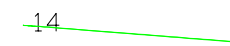
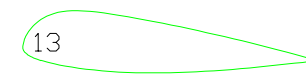
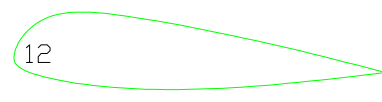
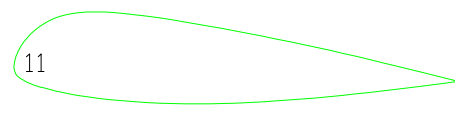
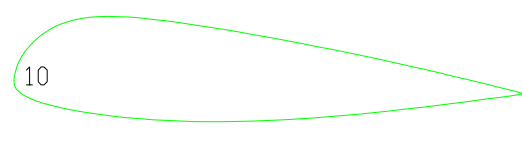
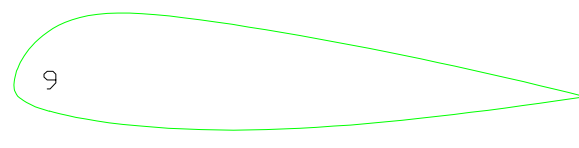
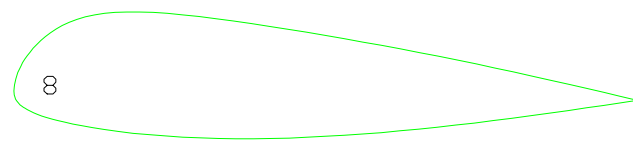
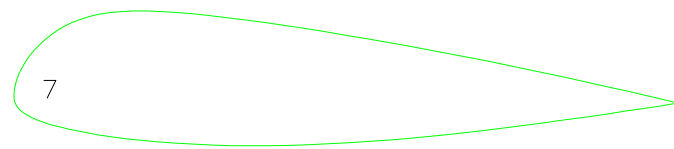
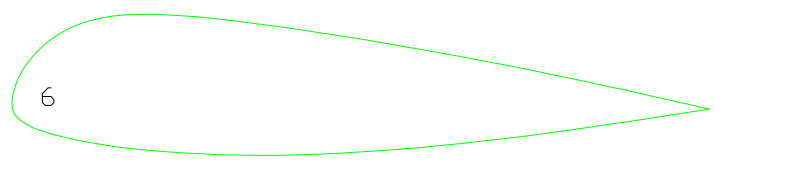
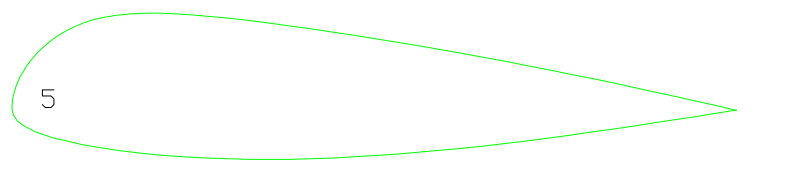
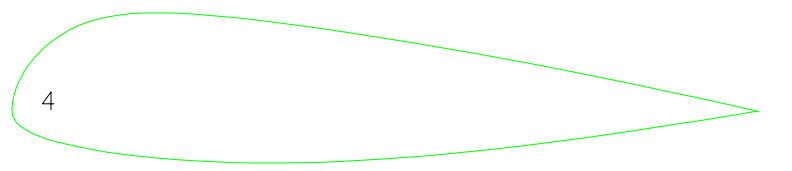
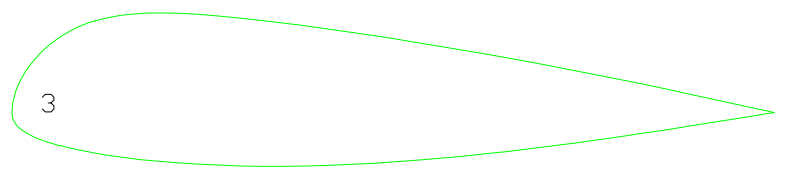
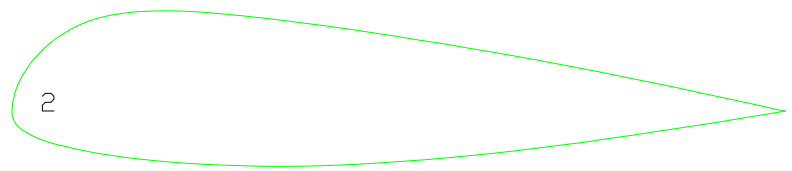
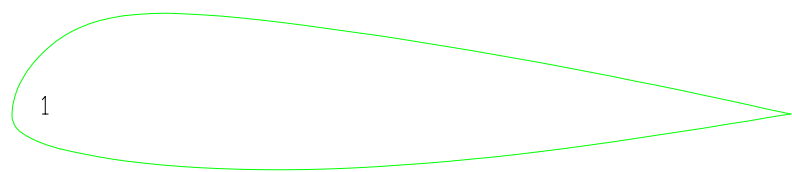
1-8 MIDDLE AND MIDDLE OVALIZED AIRFOILS



calage= 25.00
 center pressure= 35.00
 glide ratio= 7.50
 glide angle= 7.59
 angle of attack= 5.16
 assiette= 2.44



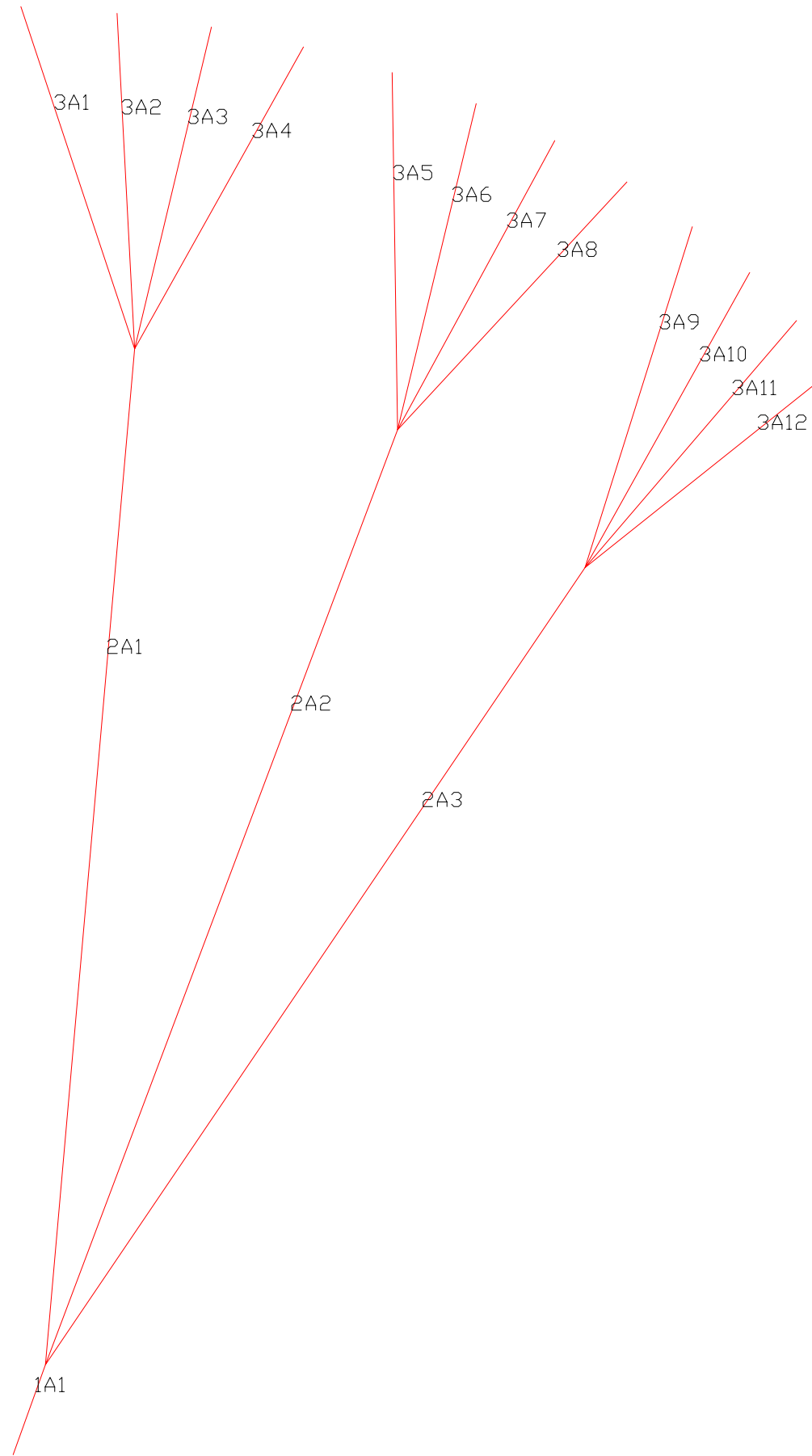
2-1 CALAGE ESTIMATION



2-2 RIBS WASHIN ANGLE

Line - Label - Length

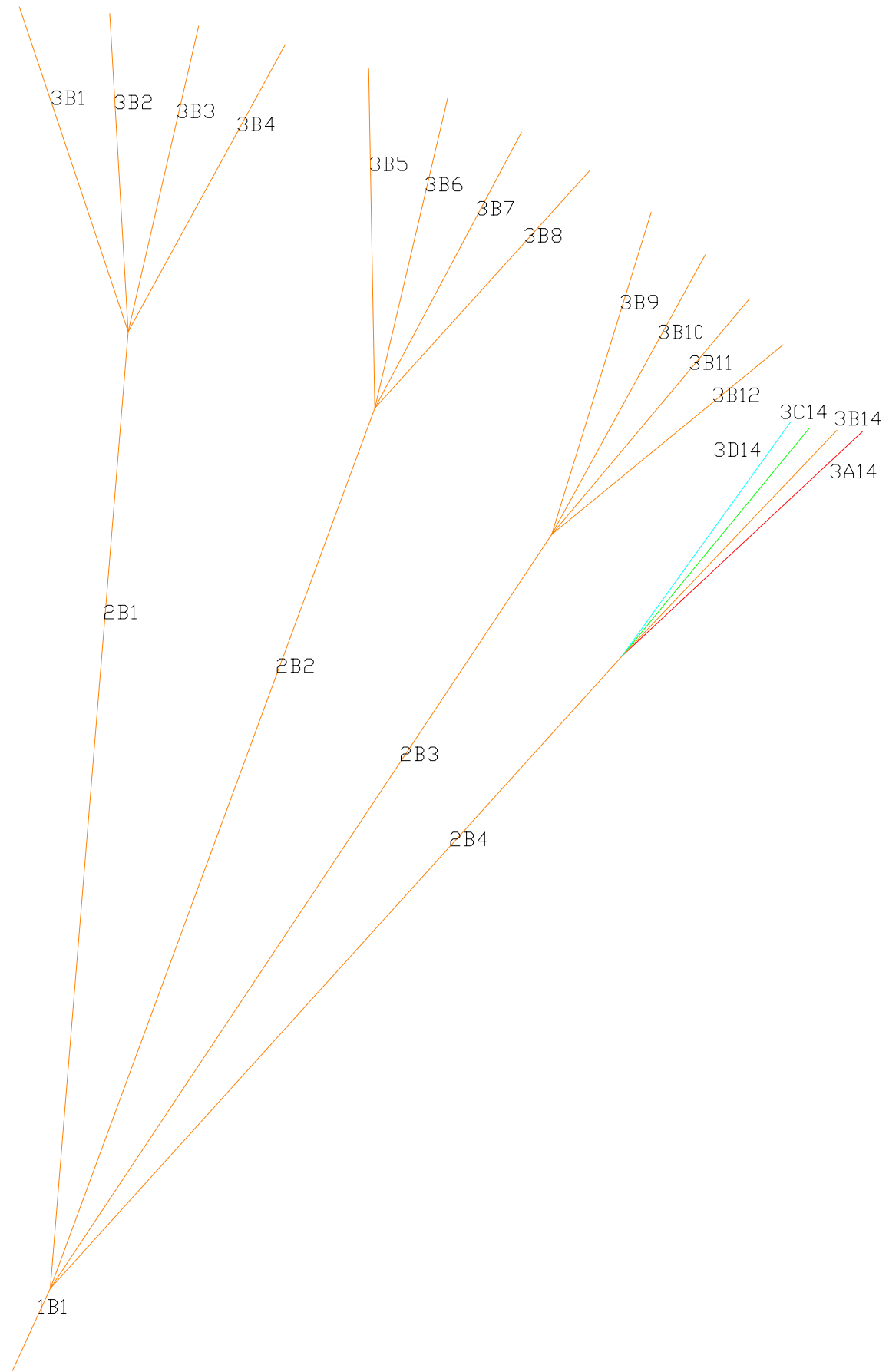
| | | |
|----|------|-------|
| 1 | 1A1 | 47.0 |
| 2 | 2A1 | 501.7 |
| 3 | 2A2 | 490.8 |
| 4 | 2A3 | 472.8 |
| 5 | 3A1 | 177.6 |
| 6 | 3A2 | 165.3 |
| 7 | 3A3 | 162.7 |
| 8 | 3A4 | 169.9 |
| 9 | 3A5 | 176.2 |
| 10 | 3A6 | 165.0 |
| 11 | 3A7 | 161.6 |
| 12 | 3A8 | 165.8 |
| 13 | 3A9 | 176.5 |
| 14 | 3A10 | 165.9 |
| 15 | 3A11 | 160.2 |
| 16 | 3A12 | 159.1 |



3-2 LINES A

Line - Label - Length

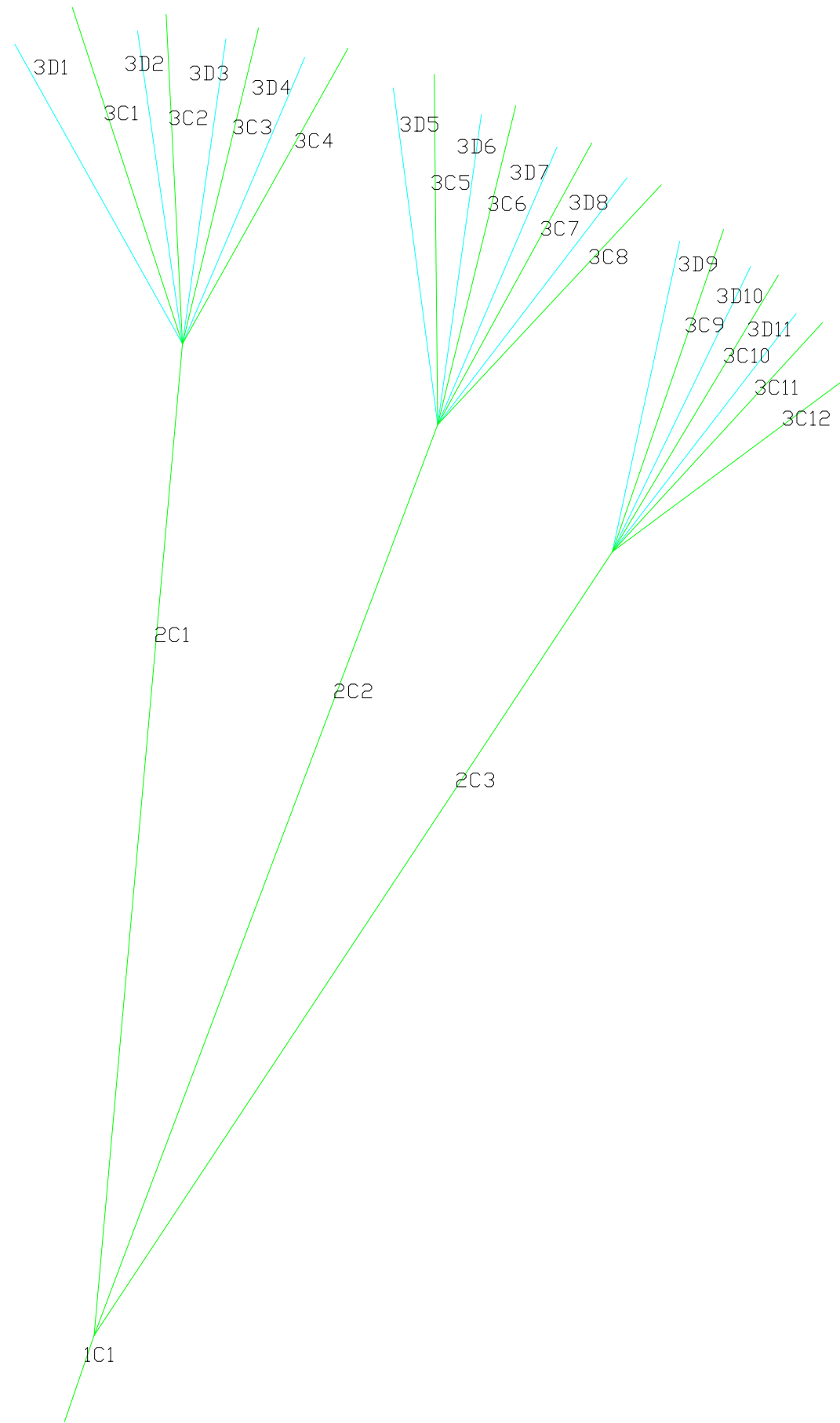
| | | |
|----|------|-------|
| 17 | 1B1 | 47.0 |
| 18 | 2B1 | 495.7 |
| 19 | 2B2 | 484.8 |
| 20 | 2B3 | 469.8 |
| 21 | 2B4 | 449.0 |
| 22 | 3B1 | 177.0 |
| 23 | 3B2 | 164.8 |
| 24 | 3B3 | 162.1 |
| 25 | 3B4 | 169.1 |
| 26 | 3B5 | 175.4 |
| 27 | 3B6 | 164.8 |
| 28 | 3B7 | 161.7 |
| 29 | 3B8 | 165.9 |
| 30 | 3B9 | 174.3 |
| 31 | 3B10 | 164.9 |
| 32 | 3B11 | 159.8 |
| 33 | 3B12 | 161.8 |
| 34 | 3A14 | 160.2 |
| 35 | 3B14 | 159.5 |
| 36 | 3C14 | 163.1 |
| 37 | 3D14 | 170.6 |



3-3 LINES B

Line - Label - Length

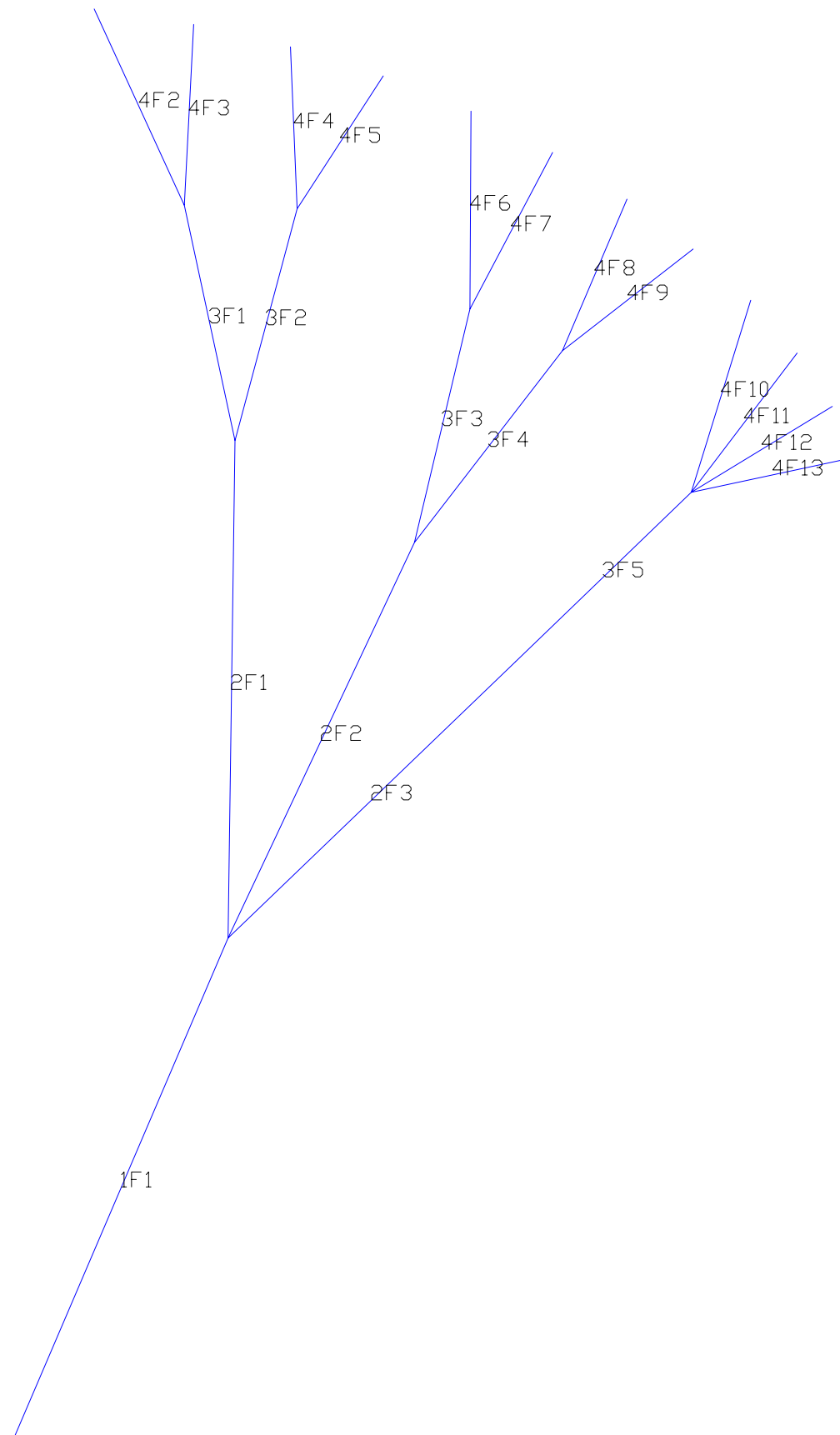
| | | |
|----|------|-------|
| 38 | 1C1 | 47.0 |
| 39 | 2C1 | 510.8 |
| 40 | 2C2 | 499.8 |
| 41 | 2C3 | 483.9 |
| 42 | 3C1 | 171.4 |
| 43 | 3C2 | 158.9 |
| 44 | 3C3 | 156.3 |
| 45 | 3C4 | 163.9 |
| 46 | 3D1 | 190.4 |
| 47 | 3D2 | 178.8 |
| 48 | 3D3 | 176.2 |
| 49 | 3D4 | 182.6 |
| 50 | 3C5 | 170.2 |
| 51 | 3C6 | 159.2 |
| 52 | 3C7 | 155.9 |
| 53 | 3C8 | 160.0 |
| 54 | 3D5 | 187.8 |
| 55 | 3D6 | 176.9 |
| 56 | 3D7 | 172.9 |
| 57 | 3D8 | 175.8 |
| 58 | 3C9 | 167.5 |
| 59 | 3C10 | 158.9 |
| 60 | 3C11 | 154.1 |
| 61 | 3C12 | 160.6 |
| 62 | 3D9 | 180.3 |
| 63 | 3D10 | 171.1 |
| 64 | 3D11 | 165.3 |



3-4 LINES C

Line - Label - Length

| | | |
|----|------|-------|
| 65 | 1F1 | 270.0 |
| 66 | 2F1 | 249.0 |
| 67 | 2F2 | 218.0 |
| 68 | 2F3 | 196.0 |
| 69 | 3F1 | 120.0 |
| 70 | 3F2 | 120.0 |
| 71 | 3F3 | 120.0 |
| 72 | 3F4 | 120.0 |
| 73 | 3F5 | 120.0 |
| 74 | 4F2 | 106.9 |
| 75 | 4F3 | 90.6 |
| 76 | 4F4 | 80.9 |
| 77 | 4F5 | 78.4 |
| 78 | 4F6 | 98.9 |
| 79 | 4F7 | 88.1 |
| 80 | 4F8 | 82.1 |
| 81 | 4F9 | 81.0 |
| 82 | 4F10 | 100.7 |
| 83 | 4F11 | 86.6 |
| 84 | 4F12 | 80.4 |
| 85 | 4F13 | 79.9 |



4-5 BRAKES

BRAKE_DISTRIBUTION
CENTER

0.00

0.00

0.00

0.00

WING_TIP

0.00

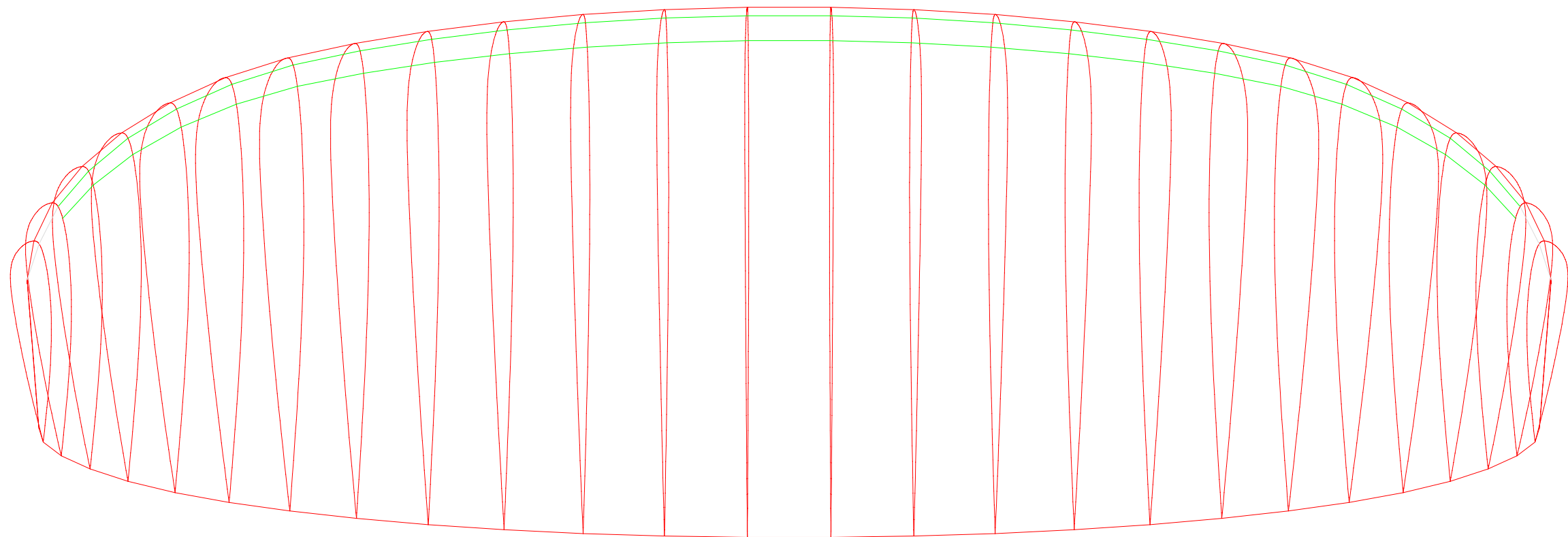
0.00

25.00

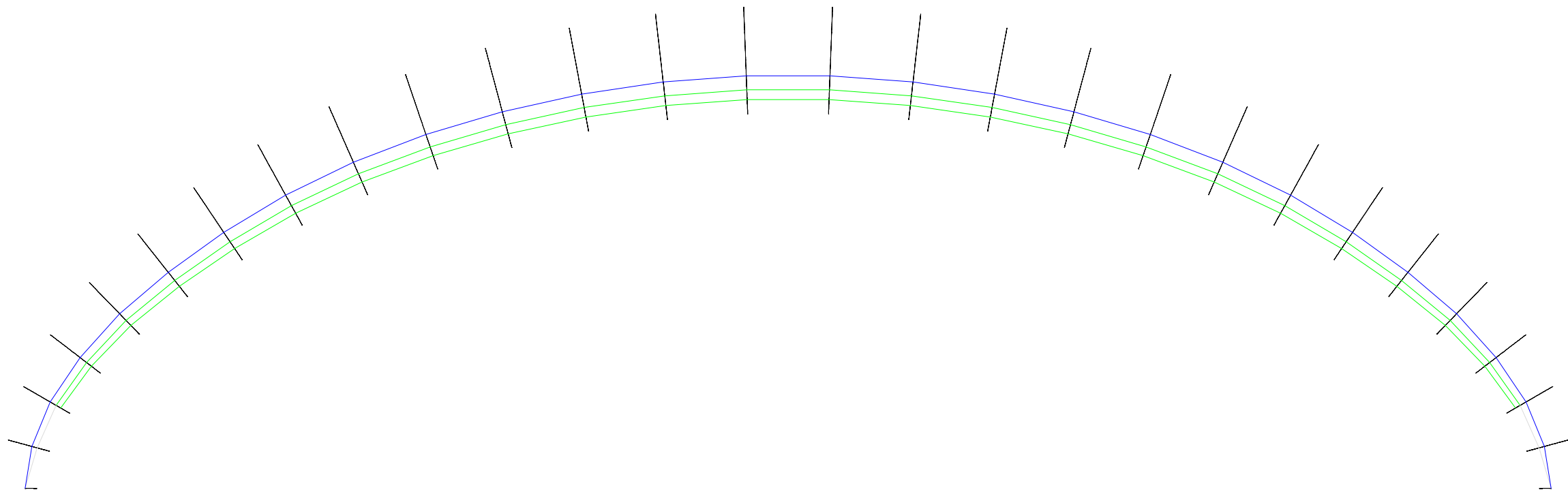
55.00

70.00

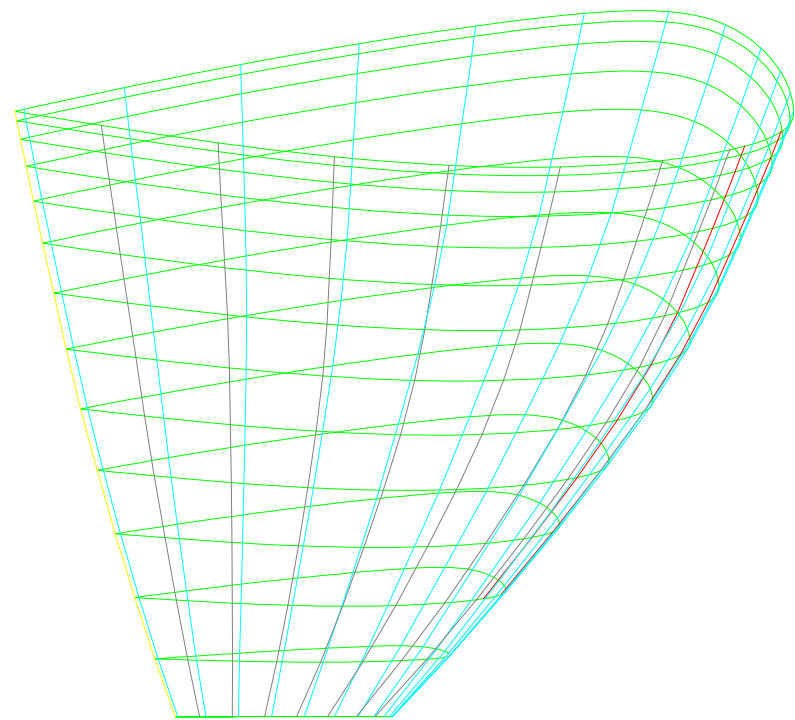
100.00



3-1 UPPER VIEW



4-1 VAULT VIEW



4-2 LATERAL VIEW

PLANS GENERAL NOTES

- 1-1: Planform and vault view (informative)
- 1-2: Ribs for plotter, one side
- 1-3: Extradados panels for plotter, one side
- 1-4: Ribs for laser cutting, one side. Units cm
- 1-5: Extradados for laser cutting, one side. Units cm
- 1-6: Middle unloaded ribs for laser cutting, one side Units cm
- 1-7: Rods pockets and nylons lengths, mylars
- 1-8: Intermediate and ovalized airfoils

- 2-1: Calage estimation, speed and trim systems
- 2-2: Ribs printed with washin angle (informative)
- 2-3: Intrados panels for plotter, one side
- 2-4: Mini-ribs horizontal and diagonal
- 2-5: Intrados for laser cutting, one side
- 2-6: Full diagonal ribs laser, one side
- 2-7: Free

- 3-1: Upper view 3D (informative)
- 3-2: Lines A
- 3-3: Lines B
- 3-4: Lines C
- 3-5: Lines D
- 3-6: V-rib type-6
- 3-7: Free

- 4-1: Vault view (informative)
- 4-2: Lateral view (informative)
- 4-3: Brake distribution (informative)
- 4-4: Free
- 4-5: Brake lines
- 4-6: Free
- 4-7: General notes

UNITS

Main units are centimeters. Scale x10 to use in mm

WIDTHS FOR SEWING AND OFFSETS

- Lateral width in extradados (mm): 15.00
- Width in leading edge ex (mm): 25.00
- Width in trailing edge ex (mm): 25.00
- Lateral width in intrados (mm): 15.00
- Width in leading edge in (mm): 25.00
- Width in trailing edge in (mm): 25.00
- Lateral width in ribs (mm): 15.00
- Lateral width in V-ribs (mm): 15.00
- General offset lateral points (mm): 1.20

- Distance between equidistant points (cm): 25.00

"ROMAN" NUMBERS CODIFICATION

Numbering panels, ribs, mini-ribs, V-ribs

- Number 1 =
- Number 2 =
- Number 3 =
- Number 4 =
- Number 5 =
- Number 6 =
- Number 7 =
- Number 8 =
- Number 9 =
- Number 10 =
- Number 11 =
- Number 12 =
- Number 13 =
- Number 14 =