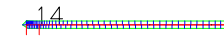
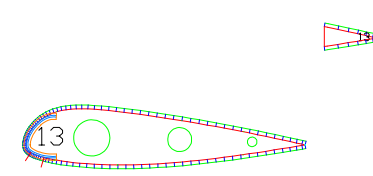
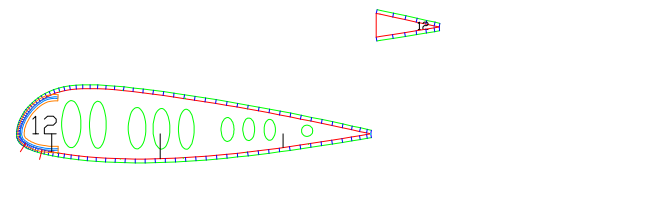
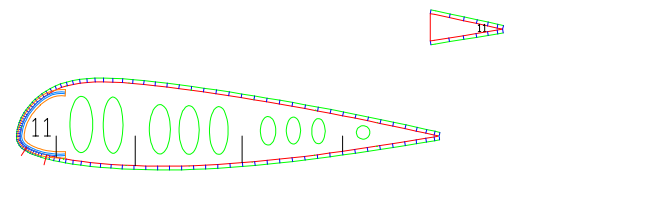
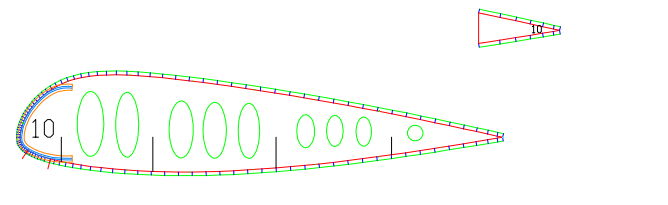
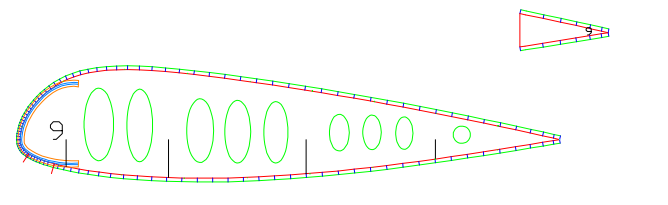
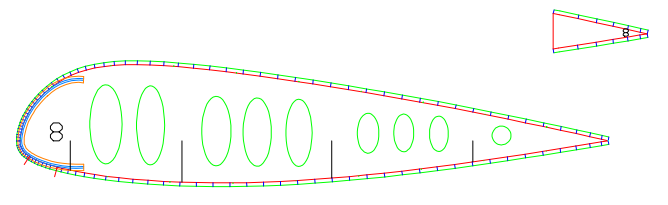
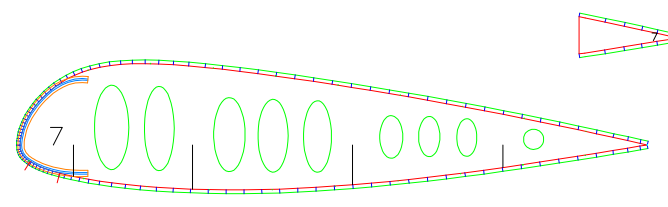
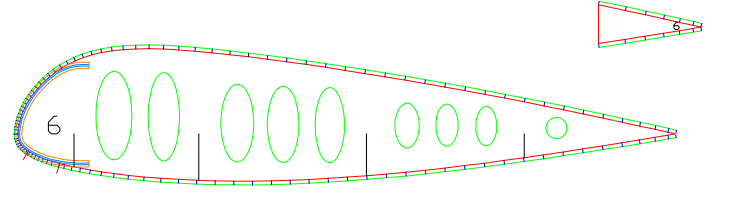
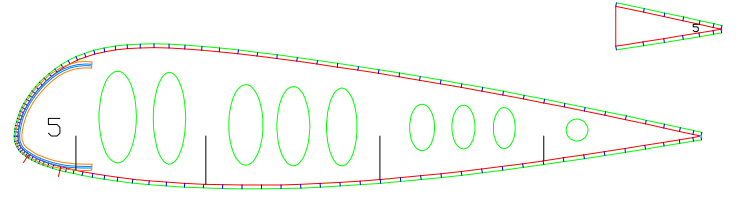
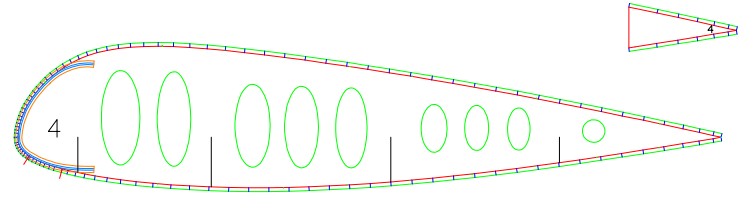
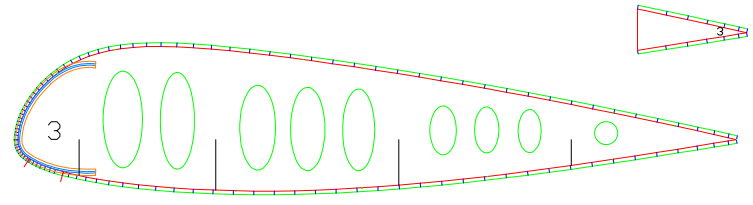
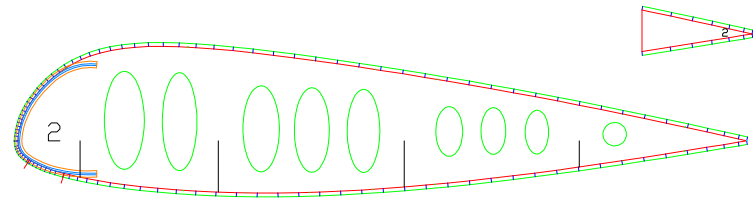
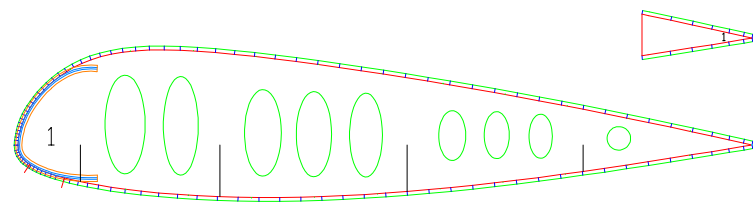
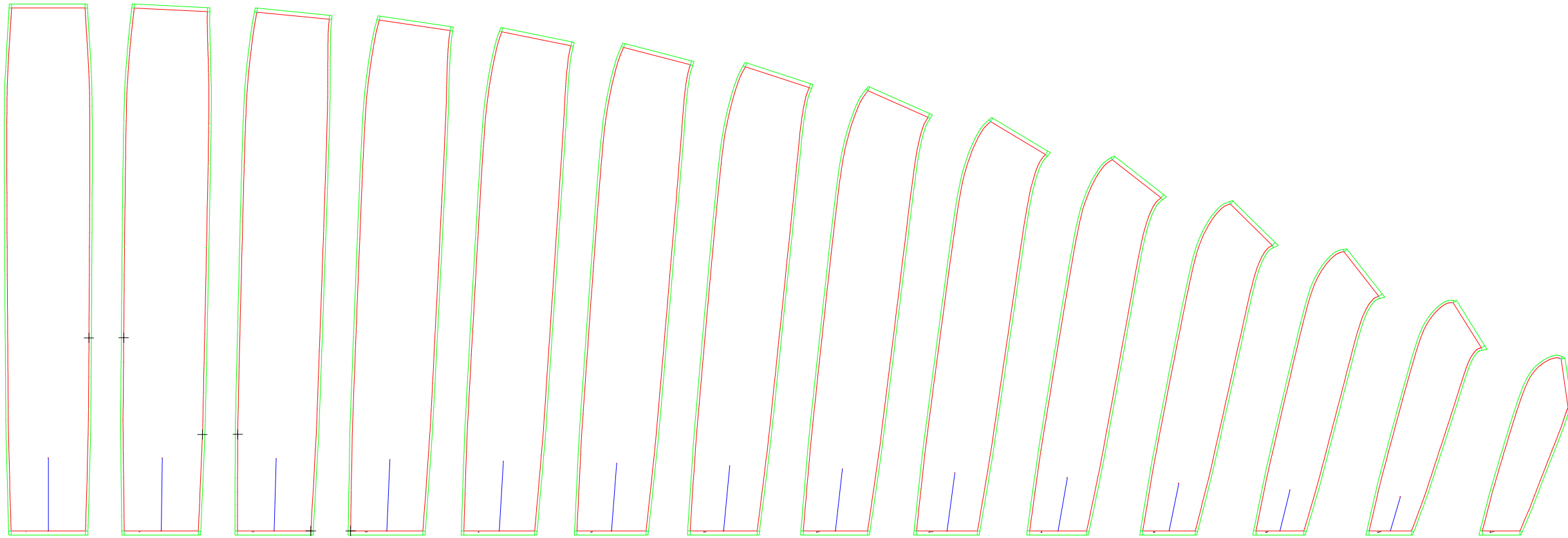


LABORATORI D'ENVOL gnuA4-24
 Flat area (m²) : 24.00
 Flat span (m) : 10.16
 Flat aspect ratio : 4.30
 Cells number : 27

1-1 PLANFORM AND VAULT



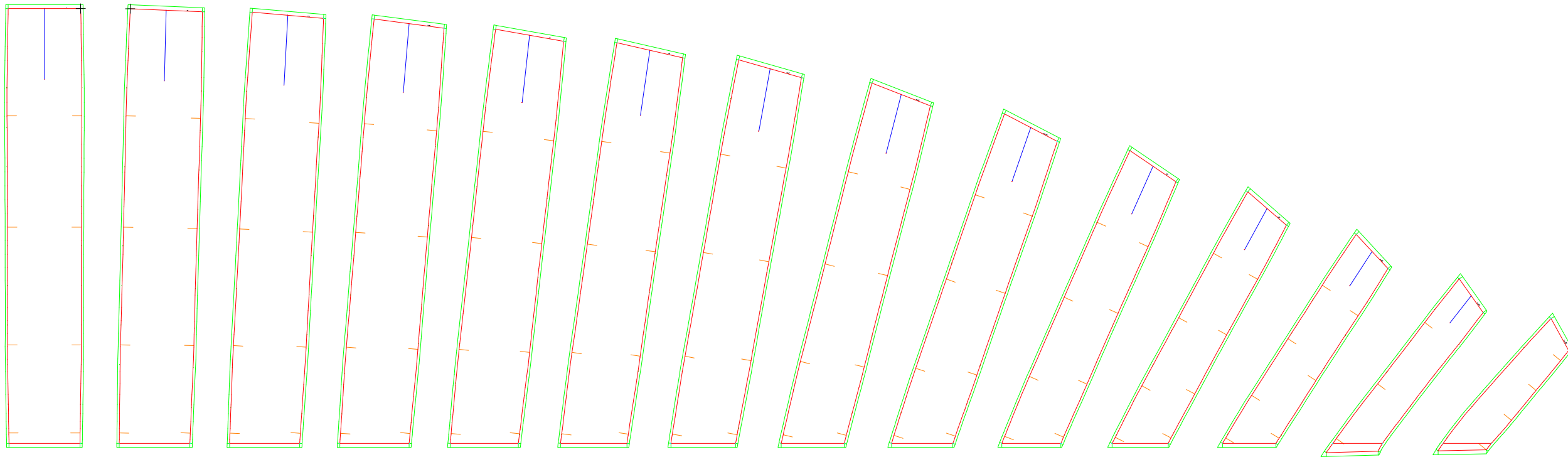
Leading edge



Trailing edge


1-3 EXTRADOS PANELS


Trailing edge





Leading edge


2-3 INTRADOS PANELS

0 1



4 5



8 9


0 1



4 5



8 9



0 1


4 5


8 9


0 1


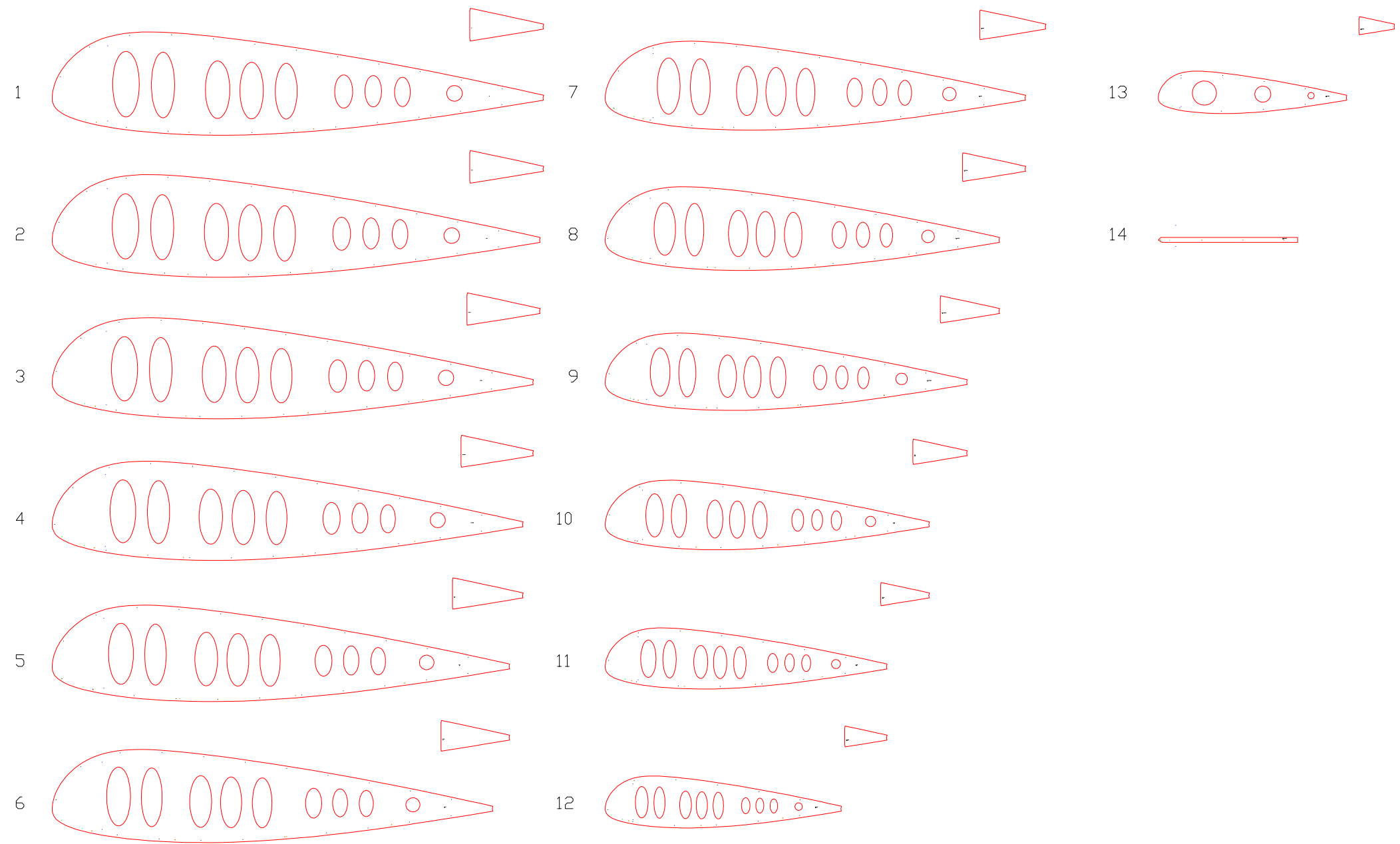
4 5


8 9




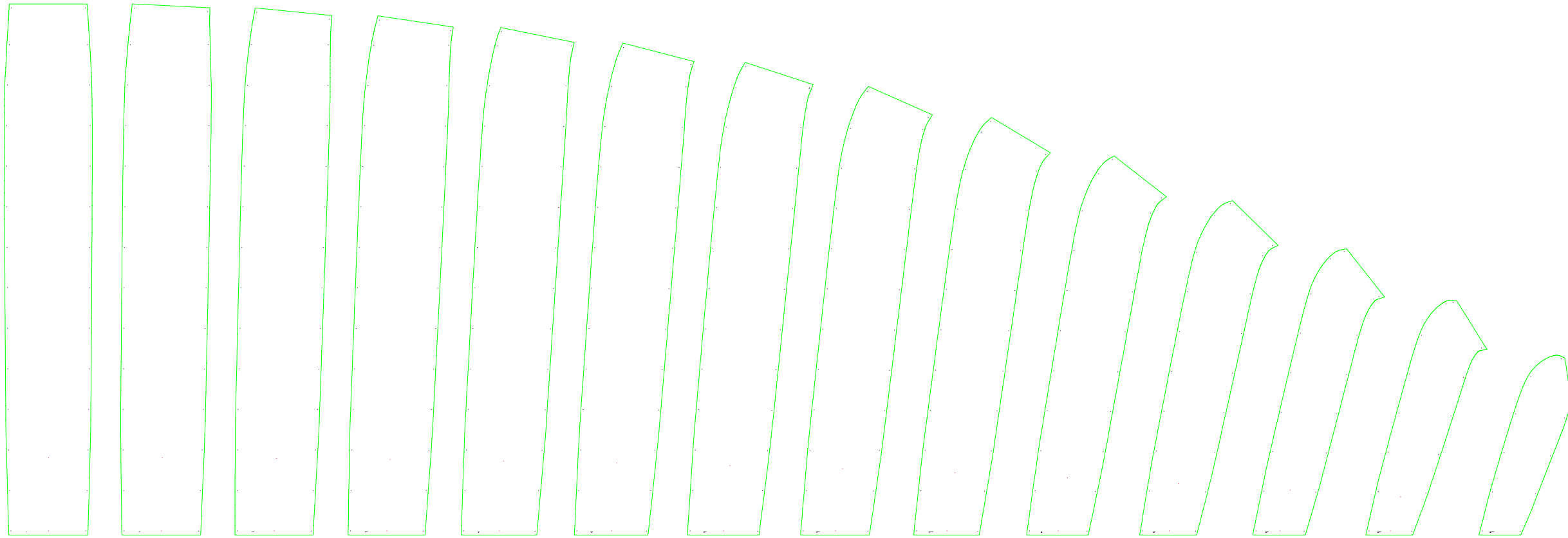
List of nylon rods (bloc 1)

Group	1	
Jonc	1	85.8
Jonc	2	85.2
Jonc	3	84.0
Jonc	4	82.2
Jonc	5	79.8
Jonc	6	76.9
Jonc	7	73.3
Jonc	8	68.7
Jonc	9	63.0
Jonc	10	56.4
Group	2	
Jonc	11	49.0
Jonc	12	41.0
Jonc	13	32.6



1-4 RIBS (FOR CUTTING TABLE)

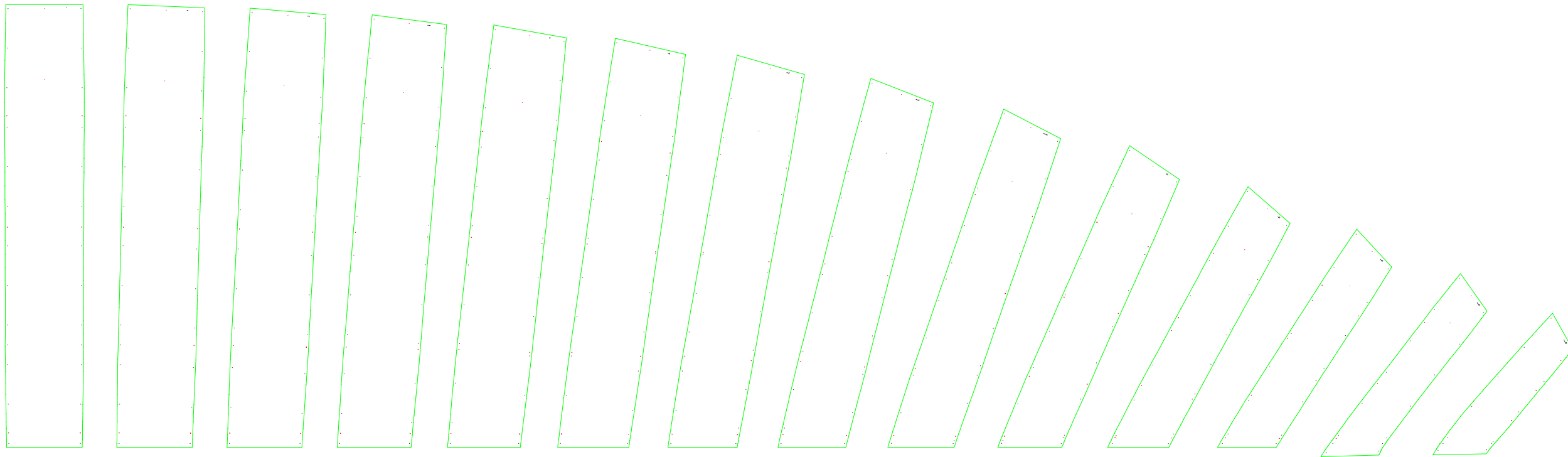
Leading edge



Trailing edge

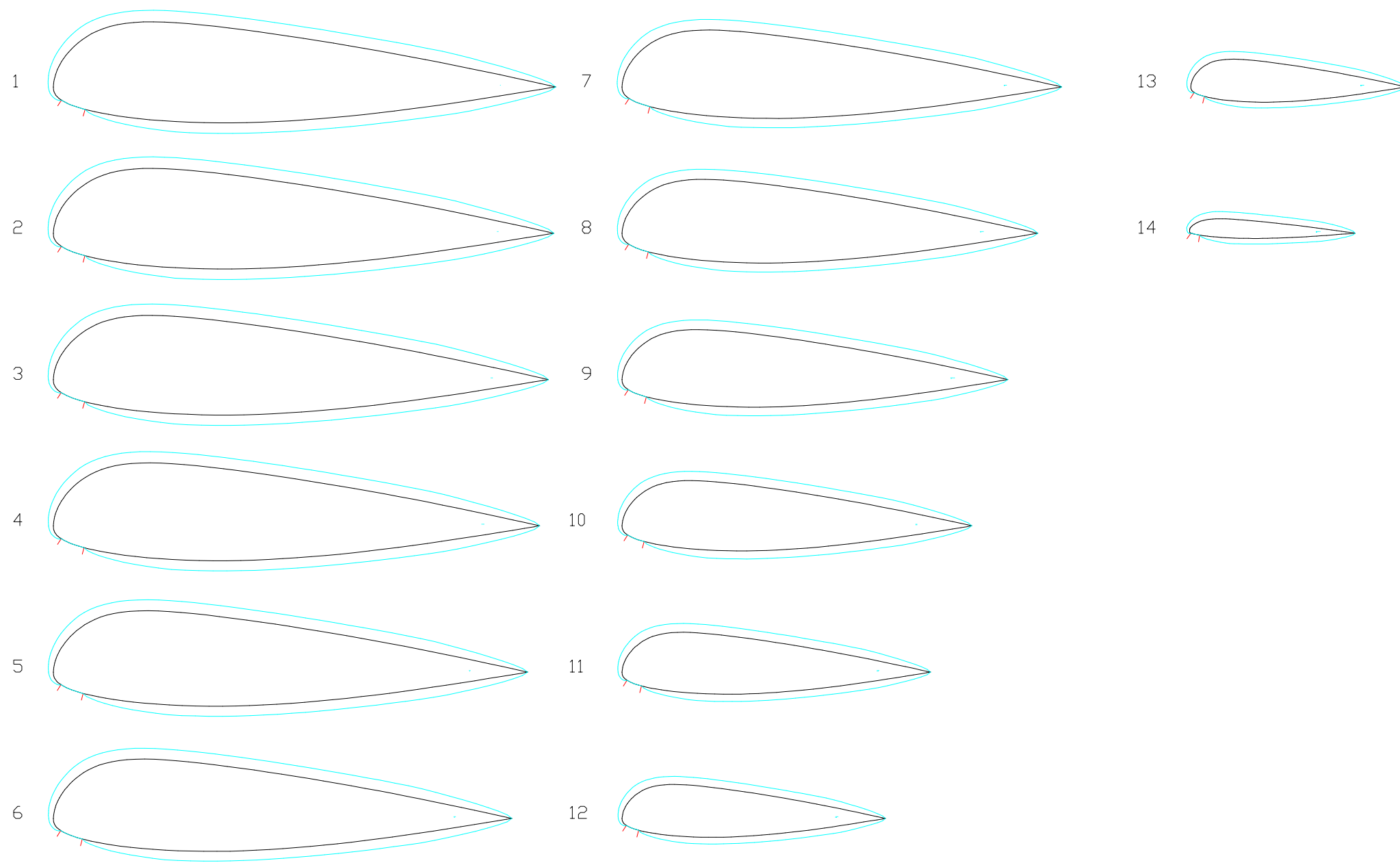
1-5 EXTRADOS PANELS (FOR CUTTING TABLE)

Trailing edge

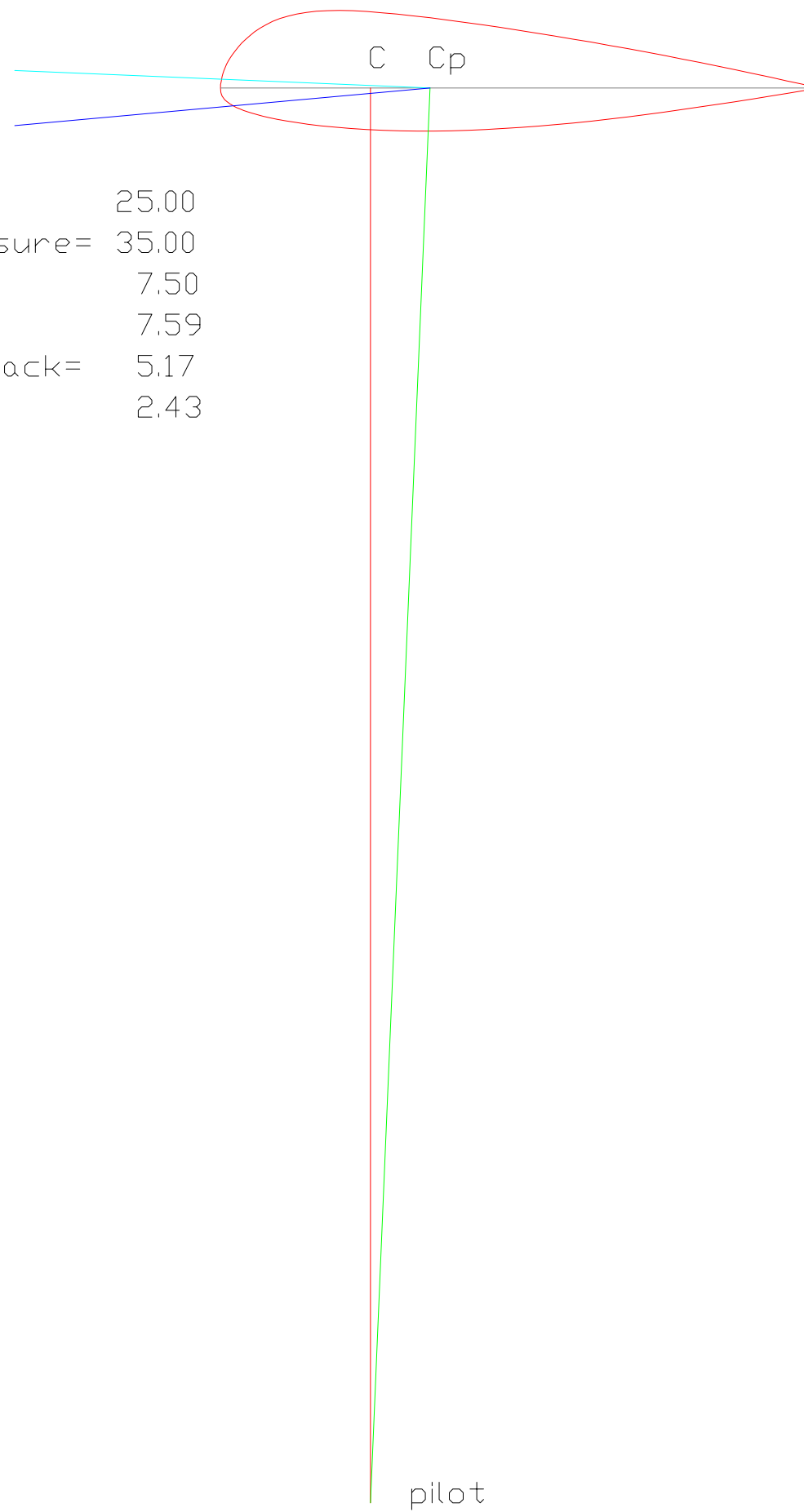


Leading edge

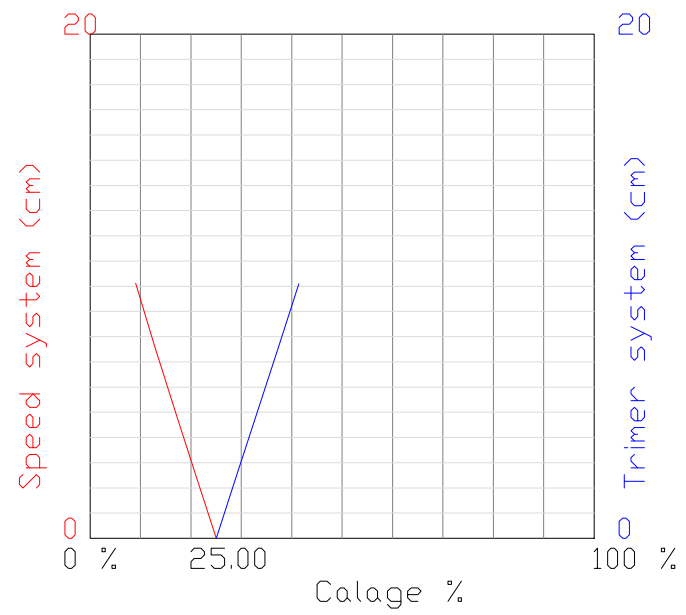
2-5 INTRADOS PANELS (FOR CUTTING TABLE)

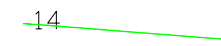
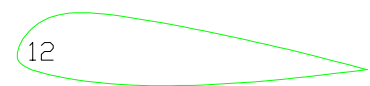
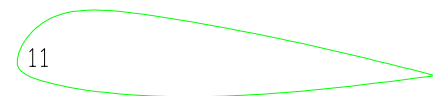
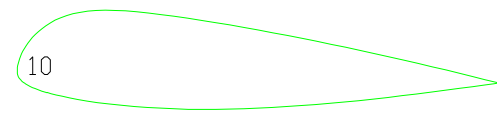
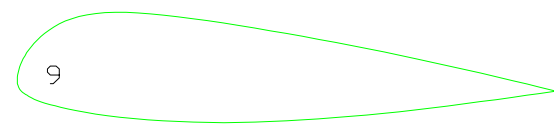
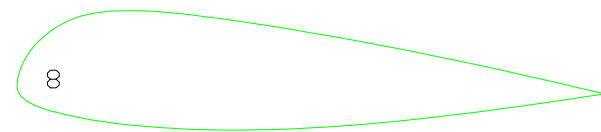
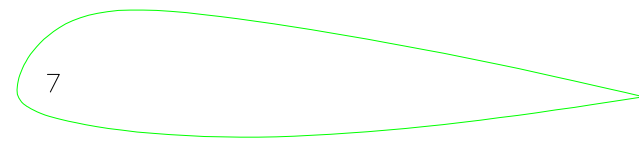
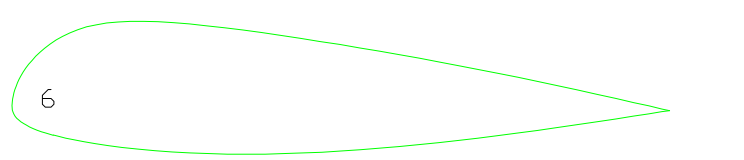
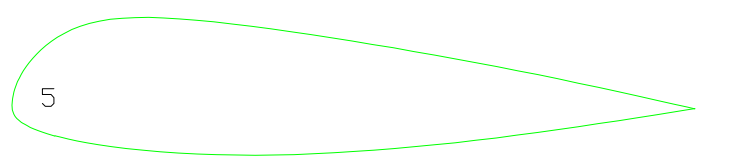
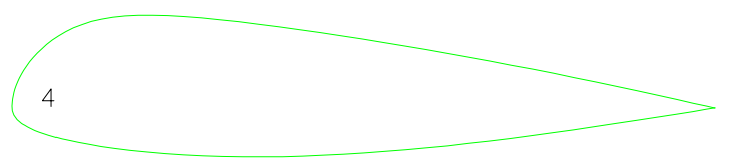
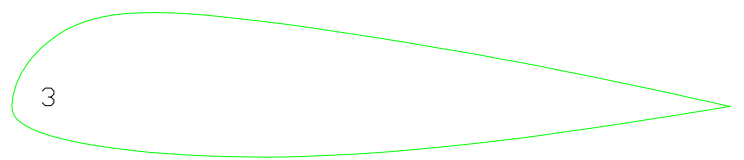
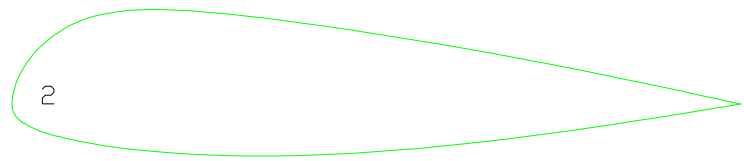
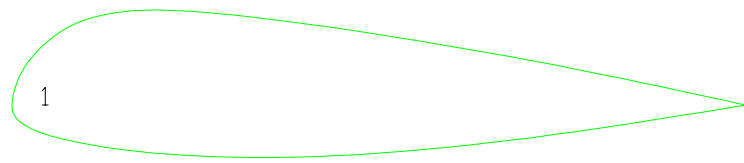


1-8 MIDDLE AND MIDDLE OVALIZED AIRFOILS



calage= 25.00
 center pressure= 35.00
 glide ratio= 7.50
 glide angle= 7.59
 angle of attack= 5.17
 assiette= 2.43

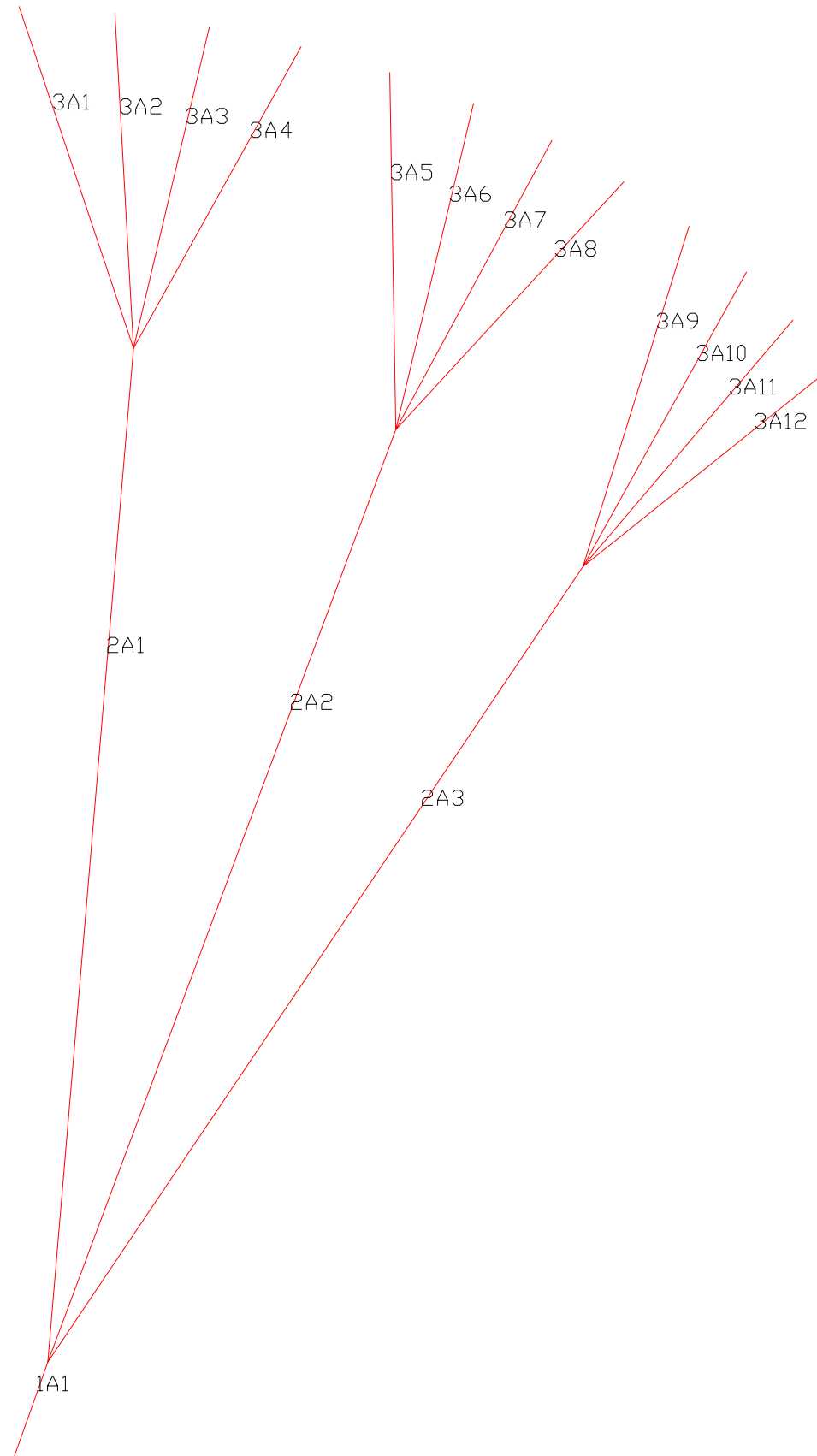




2-2 RIBS WASHIN ANGLE

Line - Label - Length

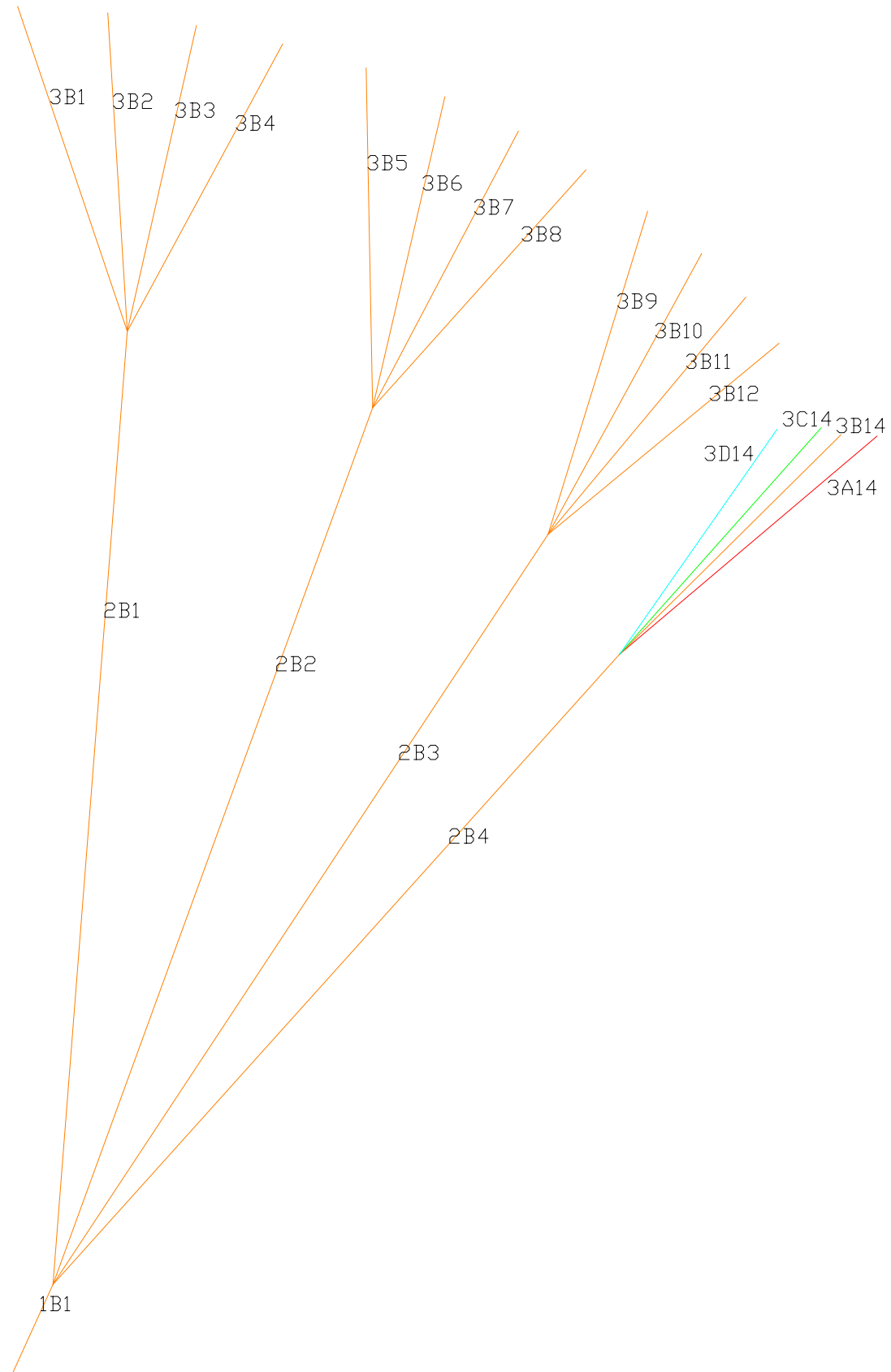
1	1A1	47.0
2	2A1	472.8
3	2A2	461.8
4	2A3	444.9
5	3A1	167.6
6	3A2	155.9
7	3A3	153.3
8	3A4	160.0
9	3A5	166.4
10	3A6	155.8
11	3A7	152.4
12	3A8	156.3
13	3A9	166.2
14	3A10	156.2
15	3A11	150.8
16	3A12	149.6



3-2 LINES A

Line - Label - Length

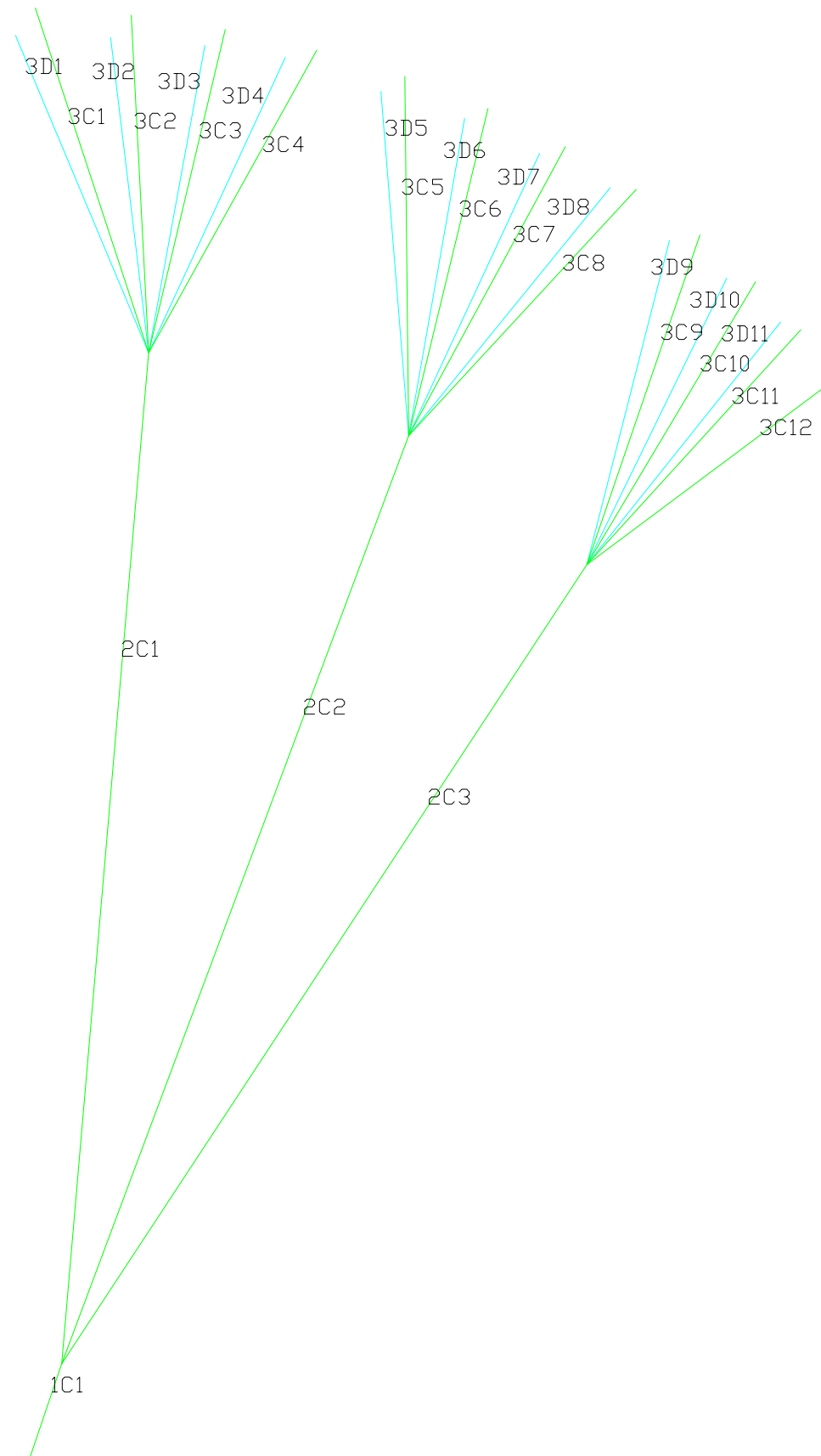
17	1B1	47.0
18	2B1	466.8
19	2B2	455.8
20	2B3	440.9
21	2B4	422.0
22	3B1	167.5
23	3B2	155.8
24	3B3	153.2
25	3B4	159.6
26	3B5	166.0
27	3B6	155.9
28	3B7	152.8
29	3B8	156.7
30	3B9	165.3
31	3B10	156.4
32	3B11	151.5
33	3B12	153.2
34	3A14	150.8
35	3B14	150.2
36	3C14	153.6
37	3D14	160.7



3-3 LINES B

Line - Label - Length

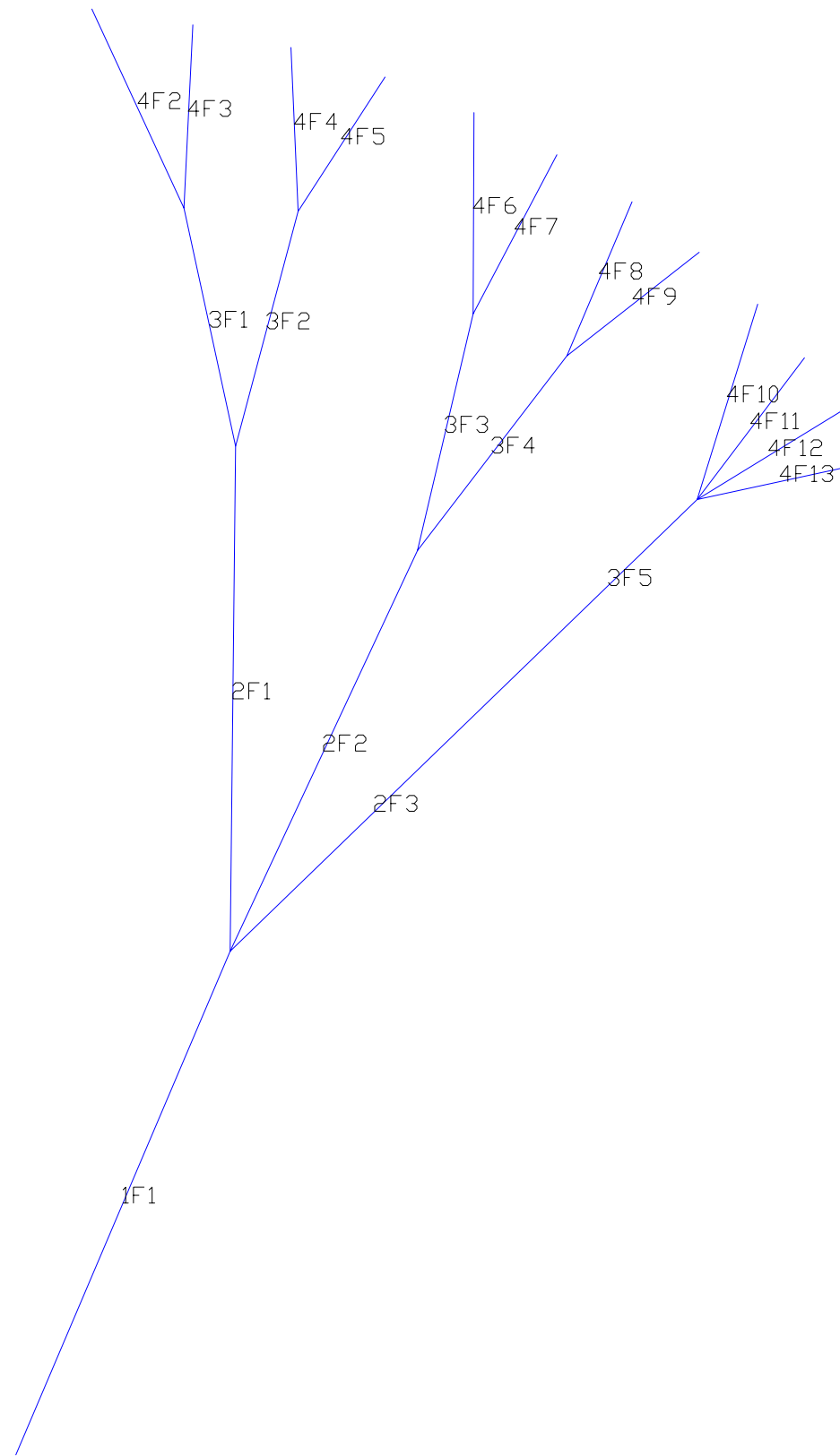
38	1C1	47.0
39	2C1	480.8
40	2C2	469.8
41	2C3	454.9
42	3C1	162.2
43	3C2	150.3
44	3C3	147.8
45	3C4	154.7
46	3D1	180.0
47	3D2	169.1
48	3D3	166.5
49	3D4	172.3
50	3C5	161.2
51	3C6	150.7
52	3C7	147.4
53	3C8	151.2
54	3D5	177.7
55	3D6	167.3
56	3D7	163.5
57	3D8	166.0
58	3C9	158.1
59	3C10	149.9
60	3C11	145.3
61	3C12	151.4
62	3D9	170.2
63	3D10	161.4
64	3D11	155.8



3-4 LINES C

Line - Label - Length

65	1F1	254.0
66	2F1	235.0
67	2F2	205.0
68	2F3	184.0
69	3F1	113.0
70	3F2	113.0
71	3F3	113.0
72	3F4	113.0
73	3F5	113.0
74	4F2	100.8
75	4F3	85.3
76	4F4	76.1
77	4F5	73.6
78	4F6	93.6
79	4F7	83.3
80	4F8	77.5
81	4F9	76.4
82	4F10	95.1
83	4F11	81.8
84	4F12	75.9
85	4F13	75.4



4-5 BRAKES

BRAKE_DISTRIBUTION
CENTER

0.00

0.00

0.00

0.00

WING_TIP

0.00

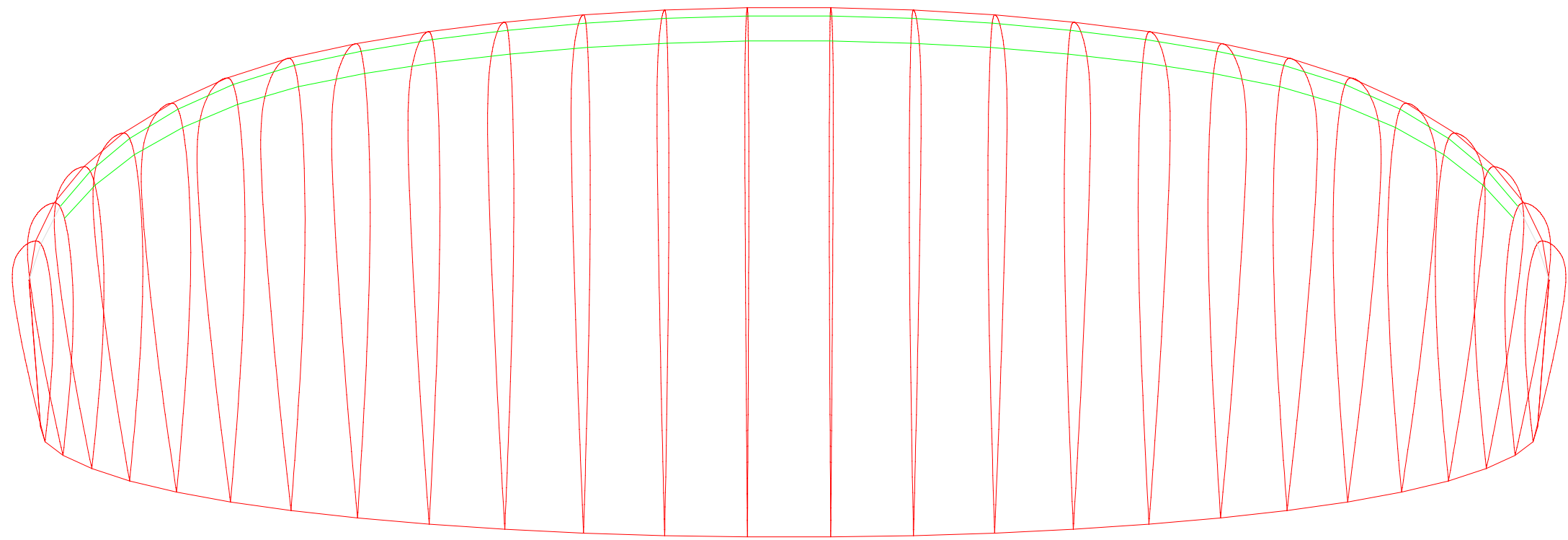
0.00

25.00

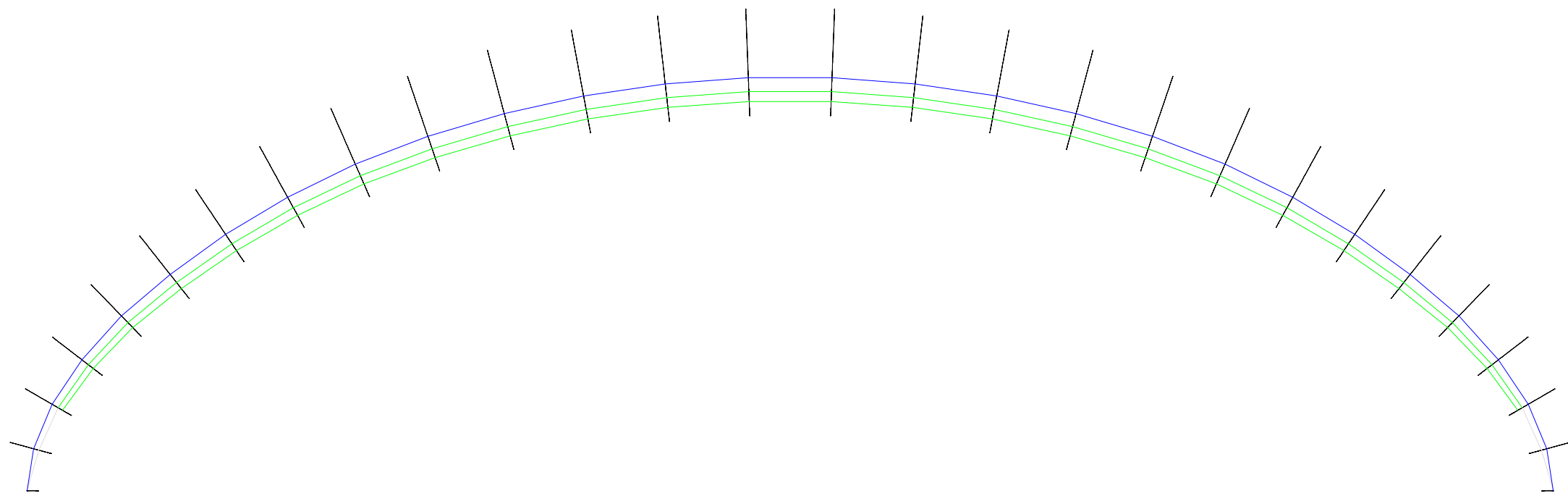
55.00

70.00

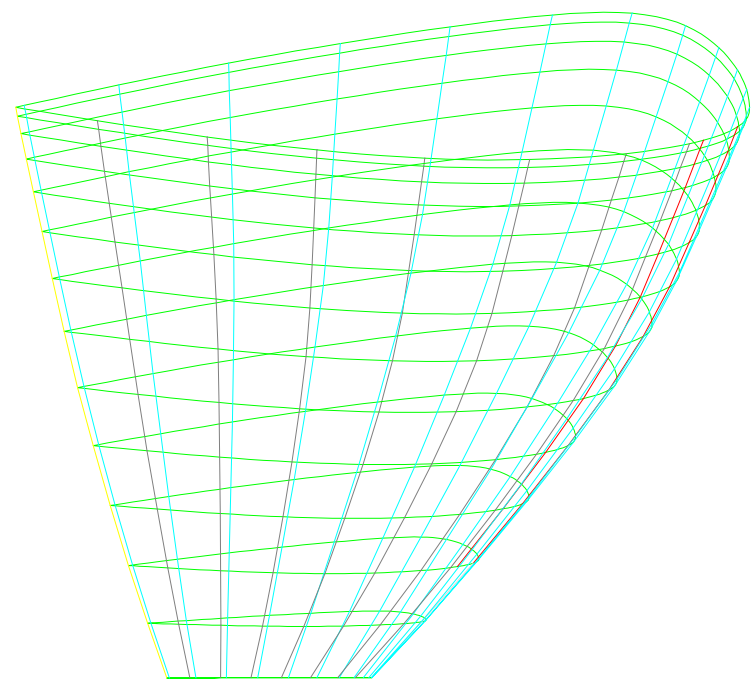
100.00



3-1 UPPER VIEW



4-1 VAULT VIEW



4-2 LATERAL VIEW

PLANS GENERAL NOTES

- 1-1: Planform and vault view (informative)
- 1-2: Ribs for plotter, one side
- 1-3: Extradados panels for plotter, one side
- 1-4: Ribs for laser cutting, one side. Units cm
- 1-5: Extradados for laser cutting, one side. Units cm
- 1-6: Middle unloaded ribs for laser cutting, one side Units cm
- 1-7: Rods pockets and nylons lengths, mylars
- 1-8: Intermediate and ovalized airfoils

- 2-1: Calage estimation, speed and trim systems
- 2-2: Ribs printed with washin angle (informative)
- 2-3: Intrados panels for plotter, one side
- 2-4: Mini-ribs horizontal and diagonal
- 2-5: Intrados for laser cutting, one side
- 2-6: Full diagonal ribs laser, one side
- 2-7: Free

- 3-1: Upper view 3D (informative)
- 3-2: Lines A
- 3-3: Lines B
- 3-4: Lines C
- 3-5: Lines D
- 3-6: V-rib type-6
- 3-7: Free

- 4-1: Vault view (informative)
- 4-2: Lateral view (informative)
- 4-3: Brake distribution (informative)
- 4-4: Free
- 4-5: Brake lines
- 4-6: Free
- 4-7: General notes

UNITS

Main units are centimeters. Scale x10 to use in mm

WIDTHS FOR SEWING AND OFFSETS

- Lateral width in extradados (mm): 15.00
- Width in leading edge ex (mm): 25.00
- Width in trailing edge ex (mm): 25.00
- Lateral width in intrados (mm): 15.00
- Width in leading edge in (mm): 25.00
- Width in trailing edge in (mm): 25.00
- Lateral width in ribs (mm): 15.00
- Lateral width in V-ribs (mm): 15.00
- General offset lateral points (mm): 1.20

- Distance between equidistant points (cm): 25.00

"ROMAN" NUMBERS CODIFICATION

Numbering panels, ribs, mini-ribs, V-ribs

- Number 1 =
- Number 2 =
- Number 3 =
- Number 4 =
- Number 5 =
- Number 6 =
- Number 7 =
- Number 8 =
- Number 9 =
- Number 10 =
- Number 11 =
- Number 12 =
- Number 13 =
- Number 14 =