

## Airfoils

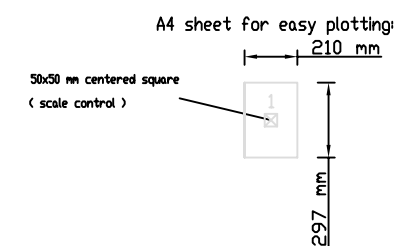
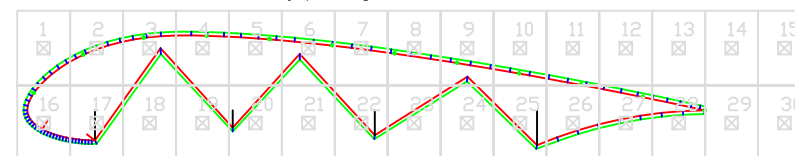
Sewing allowance 15 mm

Leading edges include 2.8 mm nylon rod from 8.3% in extrados to 11.2% in the intrados (no mylar)

(Nylon rods in ribs 1 to 16)

Design semicircular adhesive polyester reinforcements in all attachments

Use A4 (or A3) sheet for easy plotting:



2. RIBS (for printer or plotter)